

Instructions for use

JetStar Inkjet Artwork Film

100-070	Standard A4 10 sheet pack
100-071	Standard A4 100 sheet pack
100-072	Standard A3 10 sheet pack
100-073	Standard A3 100 sheet pack
100-075	Premium A4 10 sheet pack
100-076	Premium A4 100 sheet pack
100-077	Premium A3 10 sheet pack
100-078	Premium A3 100 sheet pack

You must use an inkjet printer that will print on clear transparent media. Both JetStar Standard and JetStar Premium can be used with standard inkjet printers using dye-based or pigment based inks. Both films will produce good quality artworks but for the ultimate quality choose the **JetStar Premium** with its superior coating over the more economical Standard variant. Results will vary based on printer used, type of ink, software and artwork quality. Generally, printers with higher resolution capability will yield better looking artworks.

But remember, image quality depends the most on having quality artwork with adequate resolution and smooth line edges. As with any digital media, experimentation is necessary to determine the proper equipment settings to achieve desired results.

1. Prepare artwork for output.

Remember, the quality of your digital artwork will determine the quality of your positive. Artwork should have smooth lines and edges and be of adequate resolution.

A minimum of 600 dpi is recommended (1200 dpi is ideal for line art). To prevent 'undercutting during UV exposure' we recommend you mirror image (flip) your image in your application software. This will result in the ink being in contact with the resist when the printed image is turned the correct way round ready for exposure to UV

2. Load the film into the printer.

Make sure the coated side of the film is the side you print on. To assist in determining the coated side it has a milky, matte appearance and a slightly wet finger-tip touched on the corner of the coating will result in the finger sticking to the film, more so with the Premium Film rather than the Standard.

3. Check printer settings. Make sure printer is set for the highest resolution and print quality, with High Speed Setting OFF. Note that the higher the resolution, the slower the print. Next, set the Media Setting to Matte, Heavyweight Matte, Archival Matte or Inkjet Backlight Film. For Epson Ink Jet Printers, set the Brightness control slider to +25 and always print in Black Ink only or Greyscale. Options will vary based on printer and software available. Then, set ink deposit for optimum results.

TIP: Experiment with the setting options available with your printer to determine the best set-up for your requirements. If positive seems light or lacks density, try increasing the print quality or amount of ink deposit.

4. Print. JetStar films dry almost instantaneously. With most inks, the positive will be dry and ready for use in less than 2 minutes. Drying times will vary based on printers, inks and conditions. Note: Always make sure positive is completely dry before using. Transfer or marring of image can occur if used before completely dry.

See reverse for Canon Printer instructions which are available from Mega with free pack of film.



MEGA ELECTRONICS LTD.,

Mega House,
Grip Industrial Estate, Linton,
Cambridge, CB21 4XN

Tel: +44 (0) 1223 893900

Fax: +44 (0) 1223 893894

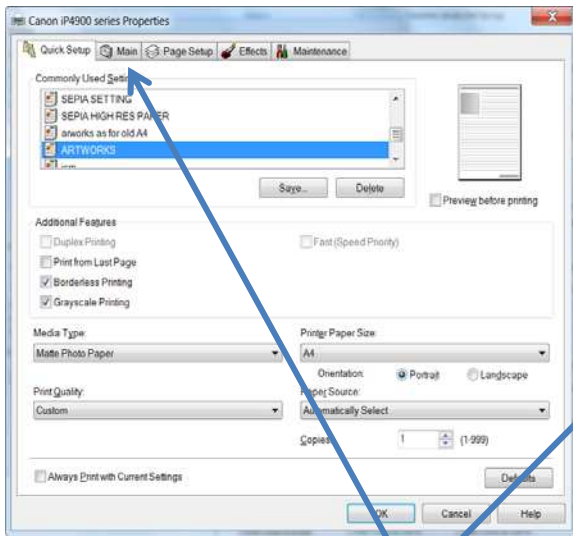
email: sales@megauk.com

web: www.megauk.com

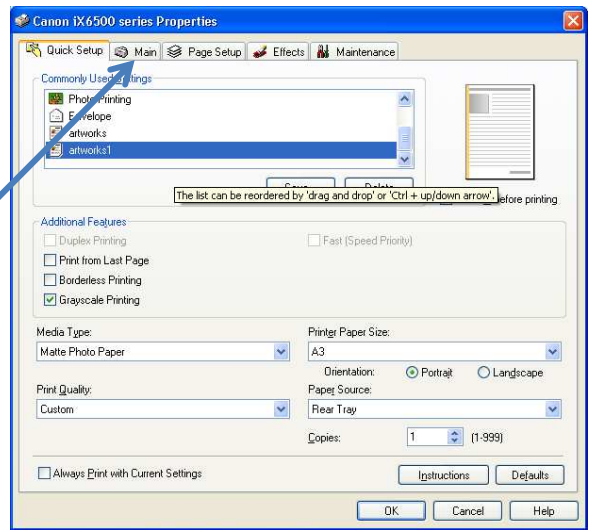
Canon iP4900/ iP7250 A4 Printers & Canon iX6500 A3 Printer

'Set-up' instructions for both printers.

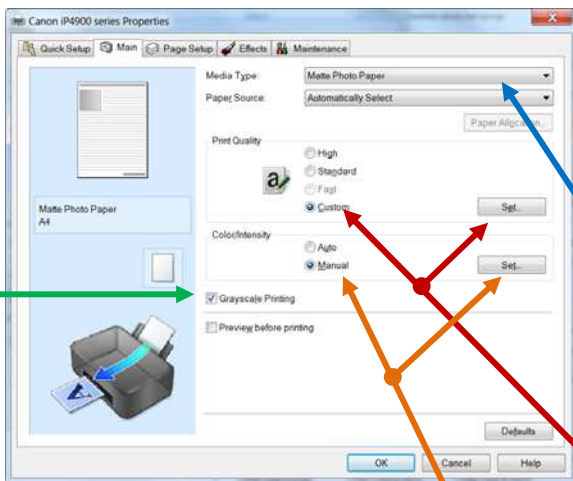
Go to 'Print' – enter Printer Properties/Options and **Screen 1** will appear



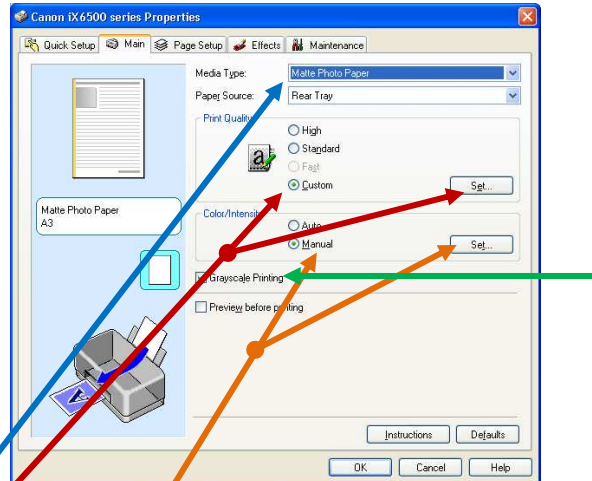
Screen 1



Click on '**Main**' on the top Menu and this will bring up **Screen 2**



Screen 2



Set paper type to **Matte Photo Paper**

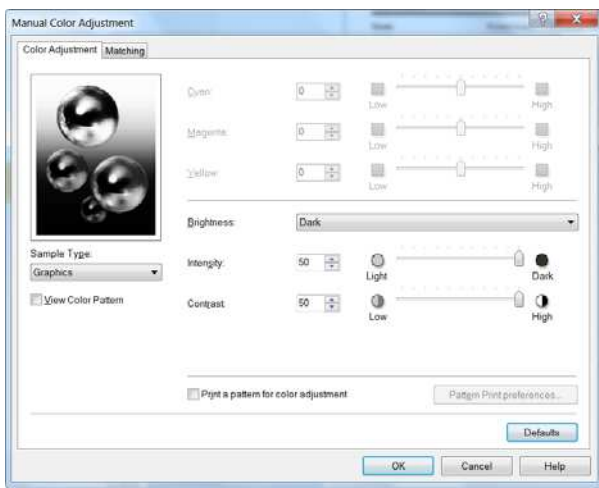
Print quality to '**Custom**' and Click '**Set**'

Please Note:

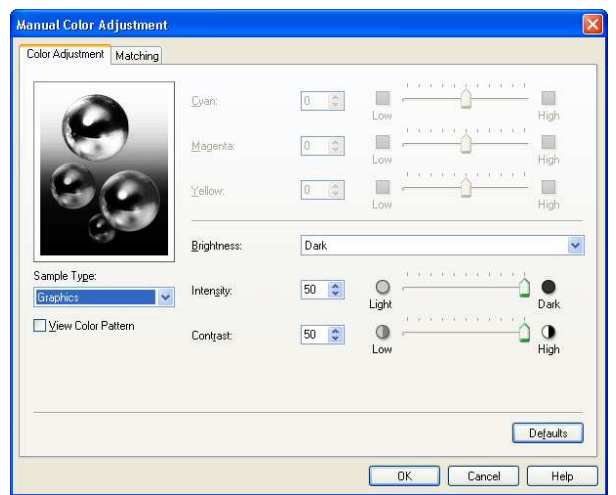
When you click on '**SET**' on the iX6500 A3 printer you are able to select a further set of options:
Select: Quality Fine
Select: Half-toning & set to Auto
Press OK

Select Colour intensity to **Manual** on both set-ups and press '**SET**'
Screen 3 will appear

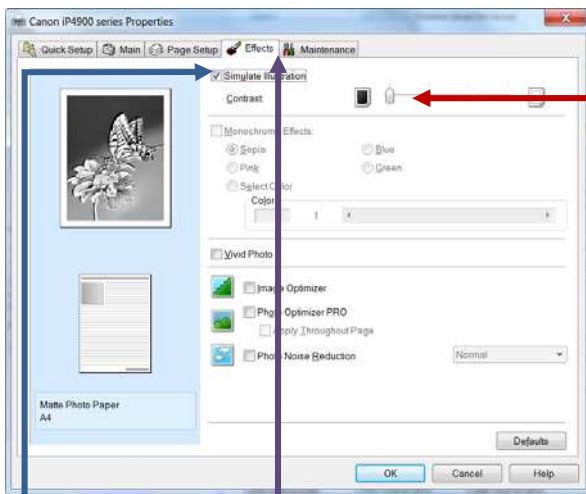
Set both printers to **Greyscale Printing**



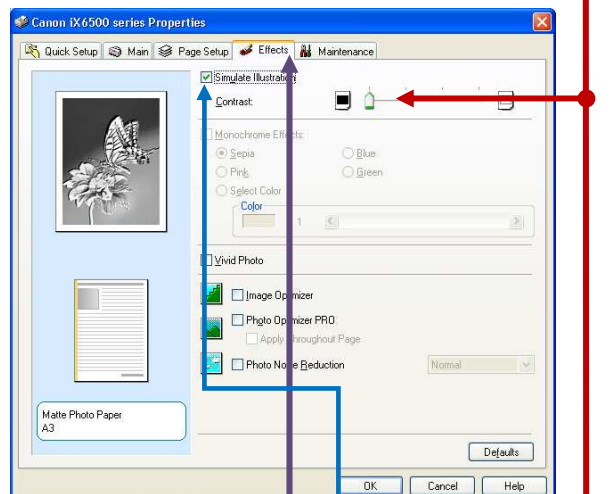
Screen 3



Set **Screen 3** as above in both printer versions and Click OK



Screen 4



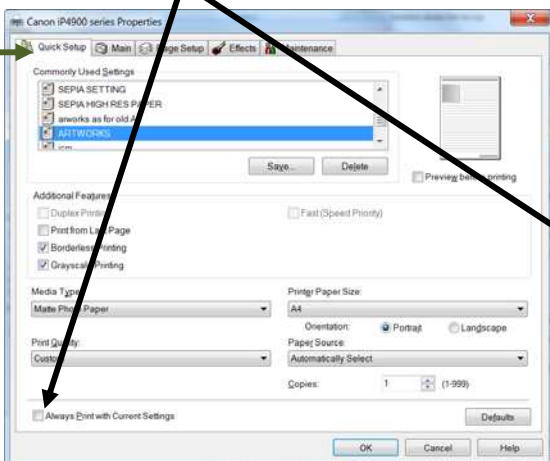
Click on **Effects Screen 4**

Tick '**Simulate Illustration Box**' and move the contrast cursor to **Dark**

DO NOT CLICK ON OK but return '**Quick Setup Box**' which takes you back to **Screen 1**.

Then clicking on 'Save' button will enable you to save this setup to say '**Artworks**'

Finally if you want to always Print with these settings: Tick box. '**Always Print with current settings**' as below



Screen 1

