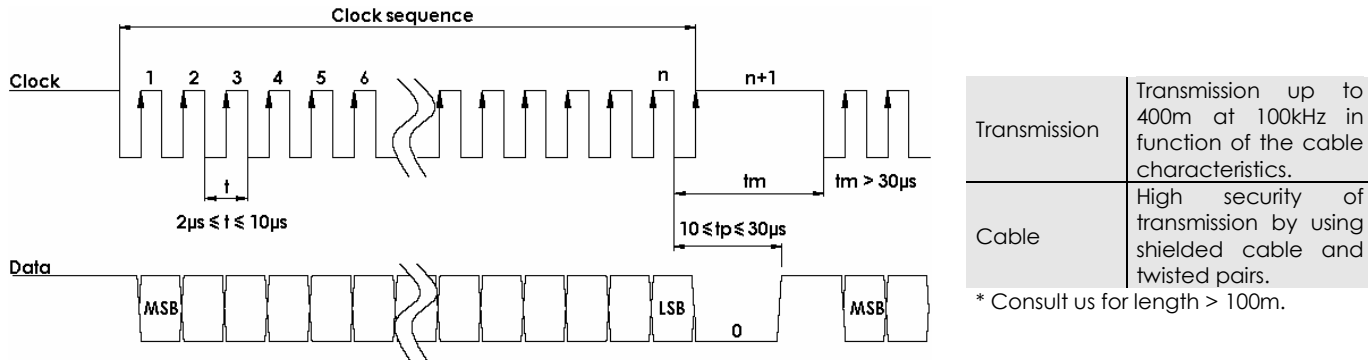


MAGNETIC SSI SINGLE-TURN ENCODERS, AXM5S – STAINLESS STEEL 316 - IP69K

ELECTRICAL DATA

Power supply	5 – 30Vdc	Introduction	<1s
Consumption without load	<40mA (at 24Vdc)	Refresh rate	< 400µs
Resolution	12 bits	Input signal clock CLK	Per optocoupler
Accuracy	± 0,3%	Output signal DATA	line - driver RS422
Repeatability	± 0,1%		

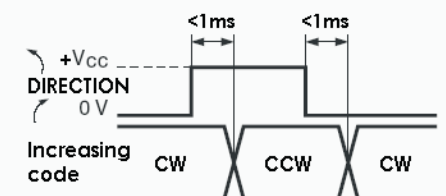
SSI TRANSMISSION



SSI CONNECTION

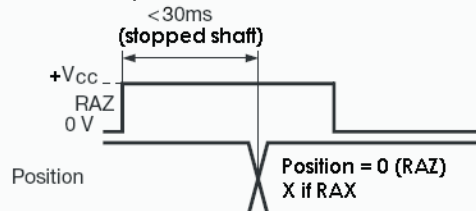
Type	Cable	+ Vcc	0 V	Clk+	Data+	RAZ	Data-	Clk-	Direction	Ground
S5	PUR cable 8230/050	BN/GN Brown/Green	WH/GN White/Green	GN Green	GY Gray	BU Blue	PK Pink	BN Brown	WH White	General shielding

DIRECTION input



Level "0"	min 0 V	max 0,3x(+Vcc)	Increasing CW
Level "1"	0,7x(+Vcc)	+Vcc	CCW
I direction	< 5mA		

RAZ / RAX input



Level "0"	min 0 V	max 0,3x(+Vcc)
Level "1"	0,7x(+Vcc)	+Vcc
I raz/rax	< 5mA	

Nota : Do not connect other pinouts, connect DIRECTION and RAZ to a potential (RAZ at 0V if not used)

ORDERING REFERENCE (Contact the factory for special versions, ex : stainless steel version, connections...)

Range	Shaft Ø	Mechanics	Supply	Output	Code	Resolution	Cable	Orientation
AXM5S	10 10mm	AA 316 stainless steel IP69K Hygienic design	P 5 to 30Vdc	CS SSI without parity CP SSI even parity CI SSI odd parity	B Binary G Gray	12 4096 points per revolution (2 ¹²)	S5 PUR cable	Example A020 : Axial Cable 2m

Ex: AXM5S 10 / AA / P CS G // 12 // S5 A050

Made in France