

## BAF SERIES, FULL BRICK, UP TO 300W

### FEATURES:

- ✓ 5 years warranty
- ✓ 1500Vdc isolation voltage
- ✓ Wide(2:1) input voltage range
- ✓ Operating temperature range -40°C to +100°C
- ✓ Under voltage, over current, short circuit, over voltage protection
- ✓ Remote on/off
- ✓ Adjustable output voltage



Model	Input voltage (Vdc)	Output voltage (Vdc)	Output current (A)	Efficiency Typ.
BAF48-50V60		5.0	60.0	86%
BAF48-120V25	48(36~72)	12.0	25.0	86%
BAF48-240V13		24.0	12.5	85%

Notes: other input and output models may available on request.

### ELECTRICAL

Input voltage range	48Vdc	36-72Vdc
Remote control	Positive logic	ON: High level or open OFF: Low level or grounded
Output power	Input voltage range	300W
Output voltage	Single output	5/12/24Vdc
Output voltage accuracy	Input voltage range,full load range	±1%
Output voltage adjustable	Negative logic	±10%
Line regulation	Full load	±0.2%
Load regulation	10%-100% full load	±0.5%
Dynamic response (transient/recovery time)	25%-50%-75% load capability	$\Delta V_o/\Delta t$ : ±4.0%/500 $\mu$ s
Ripple and noise	Parallel test, 20MHz wide range	200mVp-p max.
Operating frequency	Typical value	300KHz typ.
Isolation voltage	Input to output	1500Vdc
	Input to case	1050Vdc
	Output to case	500Vdc
Isolation resistance	---	100M $\Omega$
Safety	---	EN-60950
Temperature coefficient	---	200ppm
Operating temperature range	---	-40°C to +100°C
Storage temperature range	---	-40°C to +105°C

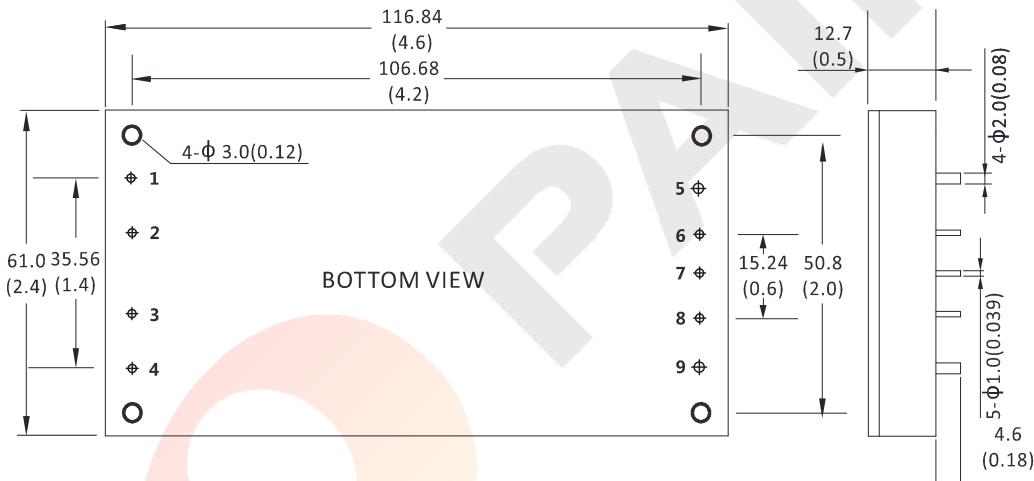
**BAF SERIES, FULL BRICK, UP TO 300W**

**ELECTRICAL**

Over temperature protection	Typical	105°C typ.
Under voltage protection	---	Yes
Output over current protection	---	Yes
Output short circuit protection	---	Yes
Output over voltage protection	---	Yes
Relative humidity	---	95% max.
Packing	---	Hole package
MTBF	Bellcore TR-332, 25°C	2x10 <sup>6</sup> Hrs

**Notes: Unless otherwise specified, all the parameters of the test conditions are as follows: ambient temperature 25°C, the nominal input voltage, pure resistive nominal load.**

**MECHANICAL**



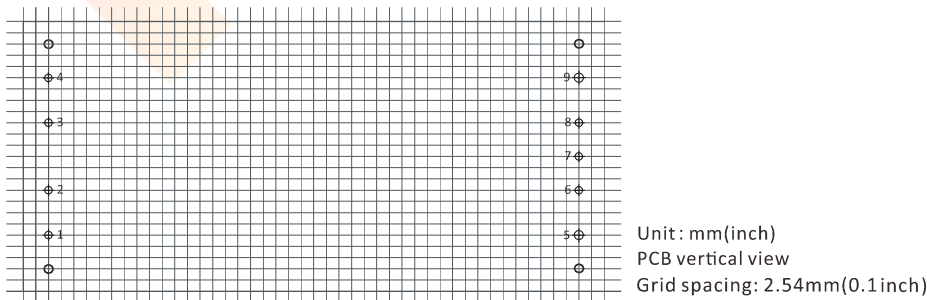
**CONNECTION**

PIN #	SINGLE
1	-Vin
2	FG
3	REM
4	+Vin
5	GND
6	-S
7	TRIM
8	+S
9	+Vo

**PCB LAYOUT**

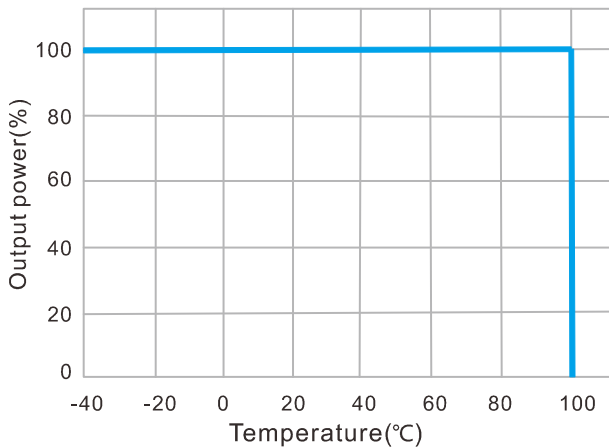
Note:

\* Unit is mm(inch).

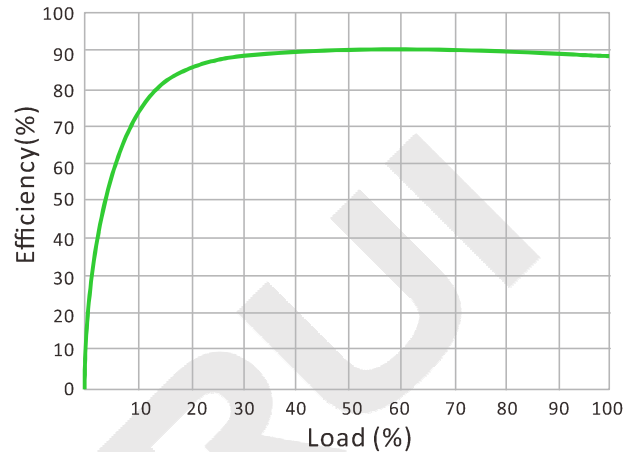


## BAF SERIES, FULL BRICK, UP TO 300W

### DERATING CURVE

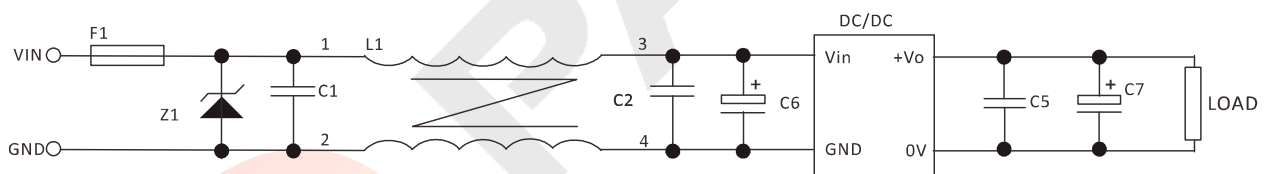


### EFFICIENCY CURVE



## NOTES

### RECOMMENDED TEST AND APPLICATION CIRCUIT



1. TVS&FUSE be helpful with over voltage protection and inrush limiting. Recommended FUSE better be 1.5~2times of the rated current .
2. The input filter capacitor C6 could select the aluminum electrolytic capacitors or tantalum capacitors, and the withstand voltage should be greater than the highest input voltage. Recommended capacitor should be between 22 $\mu$ F~100 $\mu$ F.
3. C1,C2 for the input filter capacitor,0.1~1 $\mu$ F high-frequency ceramics capacitor or chip capacitor are recommended. The withstand voltage of output filter C5, C7 should be greater than the highest output voltage. Recommended capacitor of C7 better within 100 $\mu$ F and C5 connected with the chip to reduce the input voltage peak, recommended 0.1~1 $\mu$ F high-frequency ceramics capacitor or chip capacitor.