

DMV-6 SERIES, 6WATT, 2:1 INPUT RANGE

FEATURES:

- ✓ 3 year warranty
- ✓ 1500Vdc isolation voltage
- ✓ Operating temperature range -40°C to +85°C
- ✓ Over voltage, over current, short circuit protection
- ✓ Metal case with low output ripple



Model	Input voltage (Vdc)	Output voltage (Vdc)	Output current (mA)	Efficiency Typ.
DMV6-1211	12(9~18)	3.3	1500	75%
DMV6-1212		5	1200	80%
DMV6-1213		12	500	84%
DMV6-1214		15	400	85%
DMV6-1215		24	250	88%
DMV6-1221		±5	±600	78%
DMV6-1223		±12	±250	81%
DMV6-1224		±15	±200	82%
DMV6-2411	24(18~36)	3.3	1500	75%
DMV6-2412		5	1200	80%
DMV6-2413		12	500	84%
DMV6-2414		15	400	85%
DMV6-2415		24	250	88%
DMV6-2421		±5	±600	78%
DMV6-2423		±12	±250	81%
DMV6-2424		±15	±200	82%
DMV6-4811	48(36~72)	3.3	1500	75%
DMV6-4812		5	1200	80%
DMV6-4813		12	500	84%
DMV6-4814		15	400	85%
DMV6-4815		24	250	88%
DMV6-4821		±5	±600	78%
DMV6-4823		±12	±250	81%
DMV6-4824		±15	±200	82%

Notes: Other input and output models may available on request.

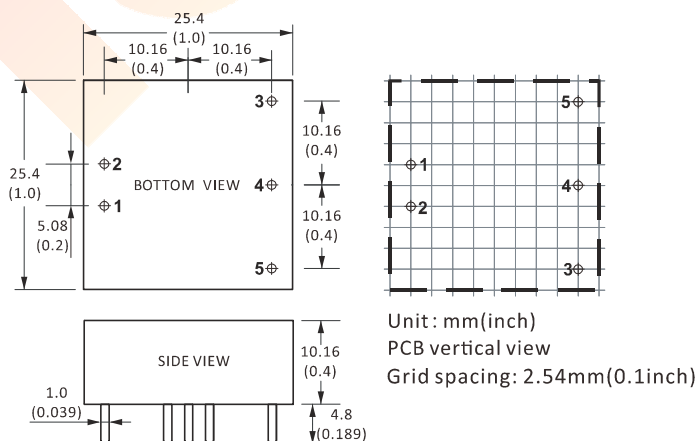
DMV-6 SERIES, 6WATT, 2:1 INPUT RANGE

ELECTRICAL

Input voltage range	9-18	12Vdc
	18-36	24Vdc
	36-72	48Vdc
Output voltage accuracy	---	Vo1≤2%
Voltage adjust	Nominal input	±10%
Line regulation	Nominal Load, full voltage	Vo1: ±0.5% max.
Load regulation	20% ~ 100% rated load	Vo1: ±1% max.
Dynamic response (transient/recovery time)	5%-50%-75% load capability	ΔVo/Δt: ±5.0%/500μs
Ripple and noise	20MHz BM, full load	1% Vo max.
Isolation voltage (<2mA/min)	Input to output	1500Vdc
Temperature coefficient	---	±0.02%/°C max.
Operating temperature range	---	-40°C to +85°C
Storage temperature range	---	-55°C to +125°C
Max case temperature	---	+105°C
Over current protection	---	Auto-recovery
Short circuit protection	---	Auto-recovery
Over voltage protection	---	Auto-recovery
Relative humidity	---	10%-90% max.
MTBF	Bellcore TR-332, 25°C	2x10 ⁵ Hrs

Notes: Unless otherwise specified, all the parameters of the test conditions are as follows: ambient temperature 25°C, the nominal input voltage, pure resistive nominal load.

MECHANICAL



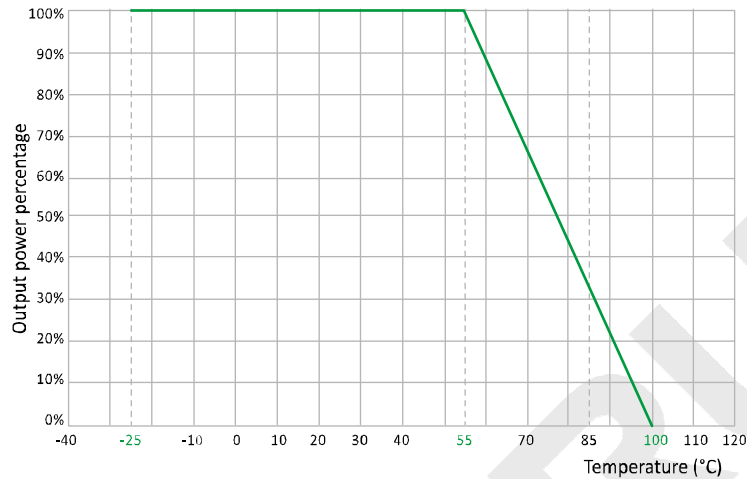
CONNECTION

PIN #	SINGLE	DUAL
1	-Vin	-Vin
2	+Vin	+Vin
3	+Vo	+Vo
4	No Pin	COM
5	-Vo	-Vo

Note:
Unit is mm(inch).

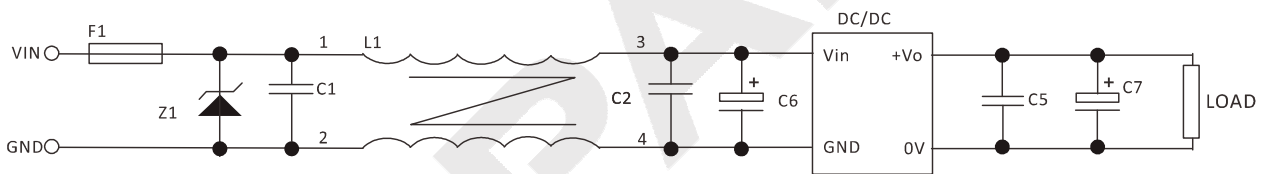
DMV-6 SERIES, 6WATT, 2:1 INPUT RANGE

TEMPERATURE PROFILE



NOTES

RECOMMENDED TEST AND APPLICATION CIRCUIT



1, TVS&FUSE be helpful with over voltage protection and inrush limiting. Recommended FUSE better be 1.5~2times of the rated current .

2, The input filter capacitor C6 could select the aluminum electrolytic capacitors or tantalum capacitors, and the withstand voltage should be greater than the highest input voltage. Recommended capacitor should be between 22 μ F~100 μ F.

3, C1,C2 for the input filter capacitor,0.1~1 μ F high-frequency ceramics capacitor or chip capacitor are recommended. The withstand voltage of output filter C5, C7 should be greater than the highest output voltage. Recommended capacitor of C7 better within 100 μ F and C5 connected with the chip to reduce the input voltage peak, recommended 0.1~1 μ F high-frequency ceramics capacitor or chip capacitor.