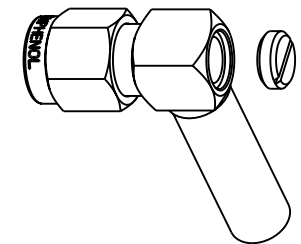


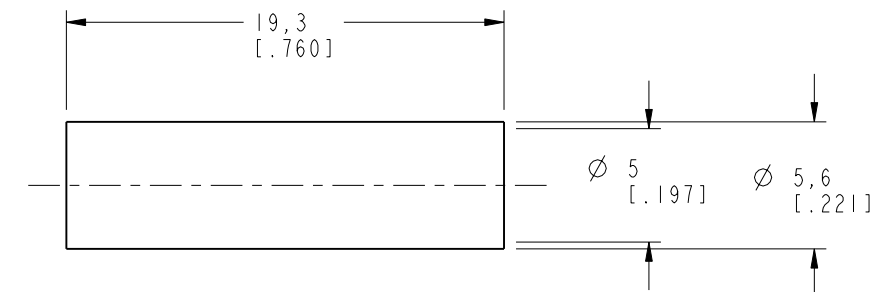
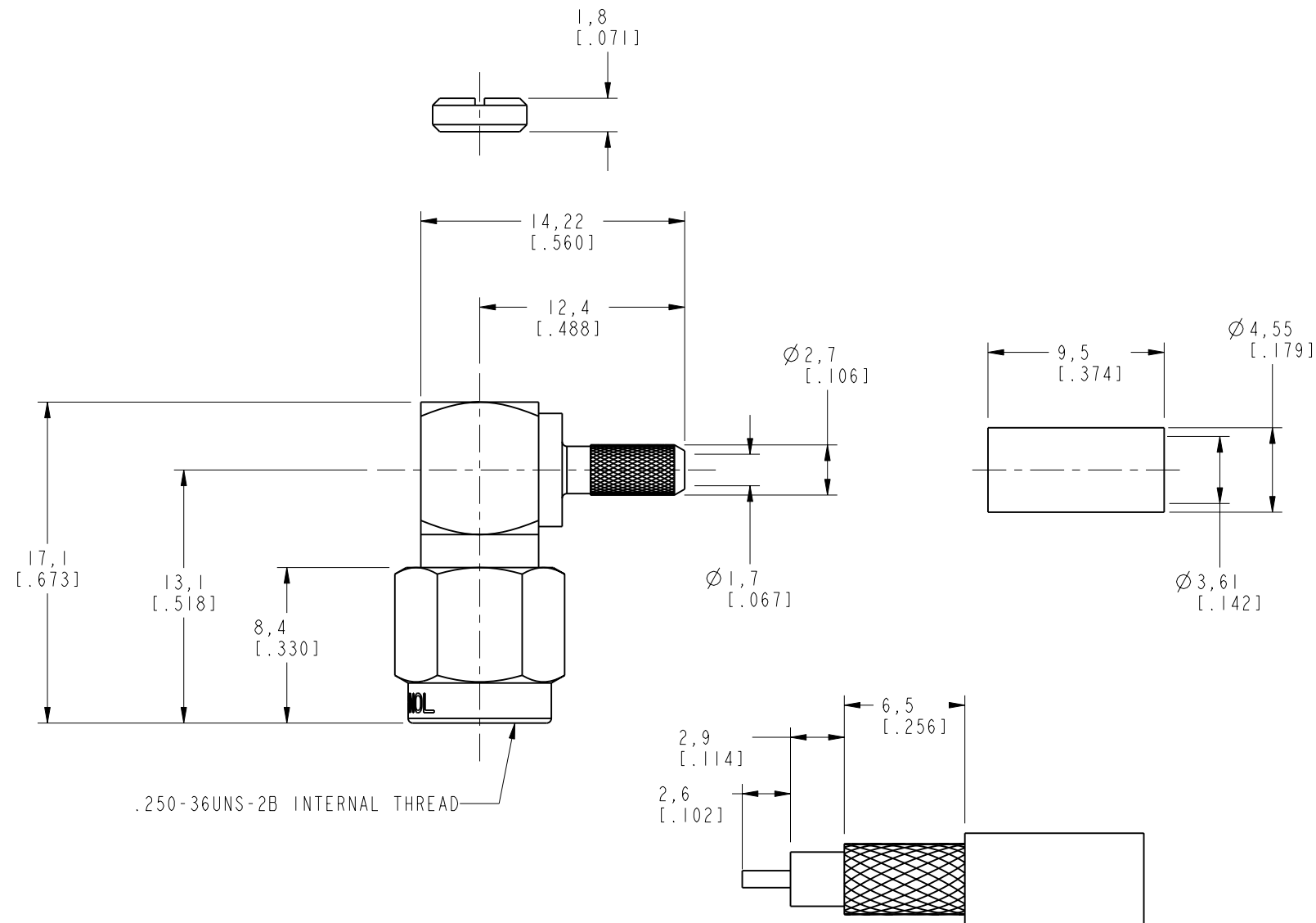
NOTES:

1. MATERIALS OF CONSTRUCTION:
SHELL, HOUSING & COVER = BRASS, GOLD PLATED (.000003 MIN THICK)
CONTACT PIN = BRASS, GOLD PLATED (.000050 MIN THICK)
RETAINER RING = BeCu, NATURAL
FERRULE = COPPER, GOLD PLATED (.000003 MIN THICK)
INSULATOR = TEFLON, MIL-P-19468
GASKET = SILICONE RUBBER, COLOR RED
HEAT SHRINK TUBING = COLOR BLACK
2. CRIMPED FERRULE = HEX CRIMP SIZE .151
CONTACT PINT TO SOLDER.

901-10028-RFX		REVISIONS				
DRAWING NO.	REV	DESCRIPTION	DATE	ECO	APPR	
THIRD ANGLE PROJ. 	B	RELEASE TO MFG.	9/14/01	43834	CPM	



SCALE 1.500



RECOMMENDED CABLE
STRIPPING DIMENSIONS
SCALE 3.000

CUSTOMER OUTLINE DRAWING

ALL OTHER SHEETS ARE FOR INTERNAL USE ONLY

UNLESS OTHERWISE SPECIFIED, DIMENSIONS ARE IN INCHES AND TOLERANCES ARE: 0.5 - 6mm ±0.2mm	MATERIAL C. McGRATH	DRAWN C. McGRATH	DATE 8/20/01	TITLE SMA R/A CRIMP PLUG (FOR RG-316U/D CABLE)			Amphenol Amphenol Corporation Communication and Network Products Division Danbury, CT U.S.A. 06810		
NOTICE - These drawings, specifications, or other data (1) are, and remain the property of Amphenol Corp. (2) must be returned upon request; and (3) are confidential and not to be disclosed to any person other than those to whom they are given by Amphenol Corp. The furnishing of these drawings, specifications, or other data by Amphenol Corp., or to any other person to anyone for any purpose is not to be regarded by implication or otherwise in any manner licensing, granting rights or permitting such holder or any other person to manufacture, use or sell any product, process or design, patented or otherwise, that may in any way be related to or disclosed by said drawings, specifications, or other data.	REFERENCE O. BARTHELMES	ENGINEER O. BARTHELMES	DATE 8/20/01						
		APPROVED O. BARTHELMES	DATE 9/14/01						
GEN# 901-9881-RFX_ASSY		CAD FILE I:\SMA\901-10028-RFX			CODE ID 74868	DWG SIZE B	DRAWING NO. 901-10028-RFX		REV B