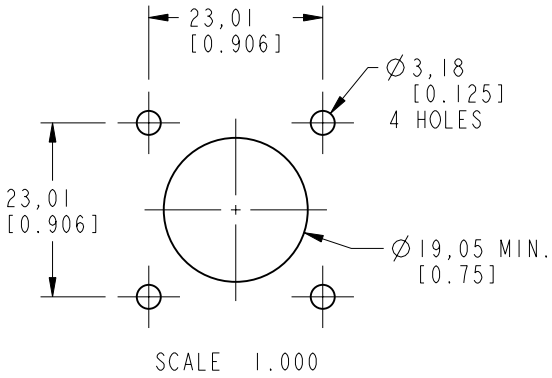
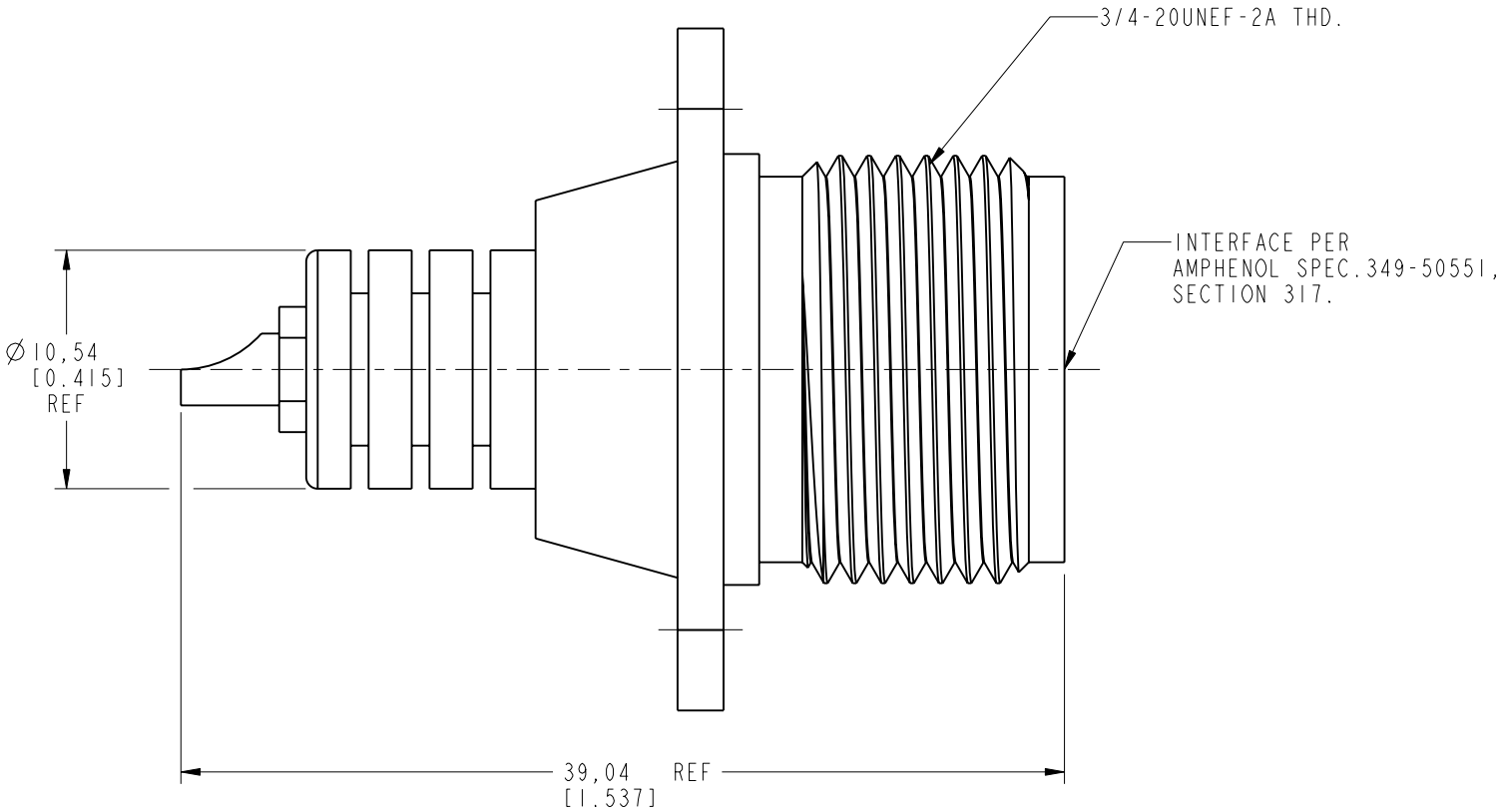


- NOTES:
- 1. MATERIALS AND FINISHES:
    - BODY - BRASS, NICKEL PLATING
    - CONTACT - BRASS, SILVER PLATING
    - FEMALE CONTACT - BERYLLIUM COPPER, SILVER PLATING
    - INSULATOR - COPOLYMER OF STYRENE
  - 2. ELECTRICAL:
    - A. IMPEDANCE: 50 OHM
  - 3. MECHANICAL:
    - A. DURABILITY: 500 CYCLES MIN.
  - 4. PACKAGING:
    - A. QUANTITY: SINGLE PACK
    - B. MARKING: BAG TO BE MARKED "AMPHENOL RF, 82-92, AND DATE CODE"

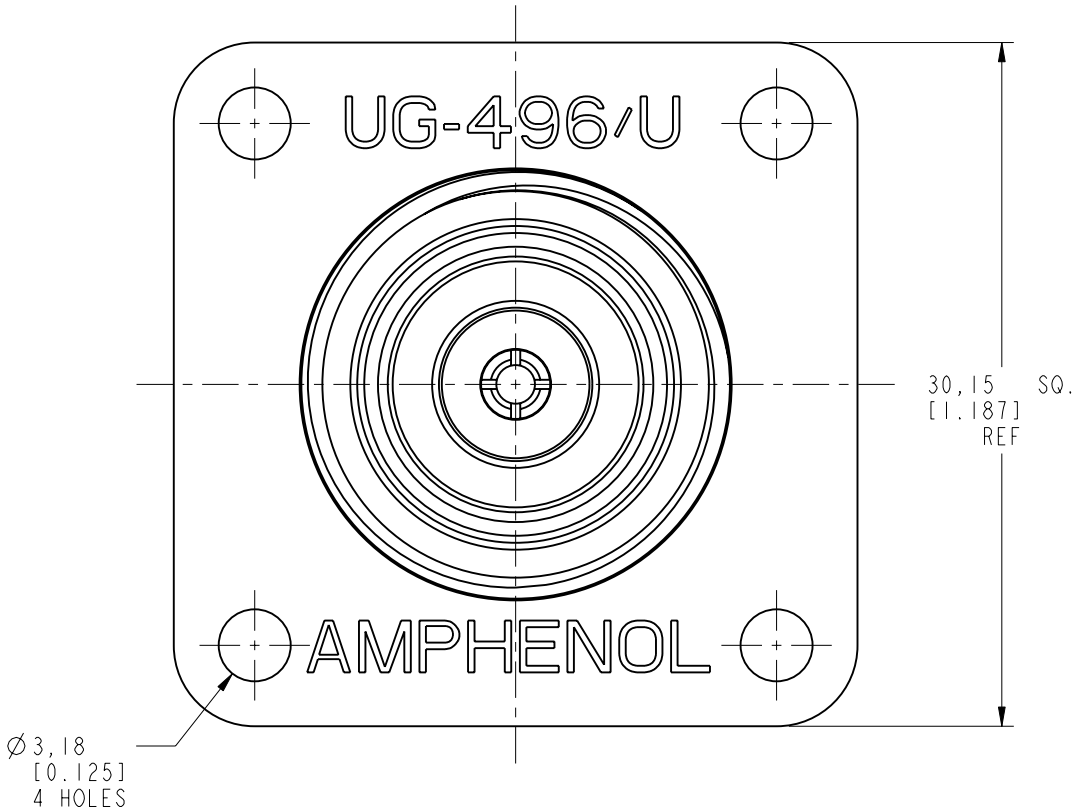
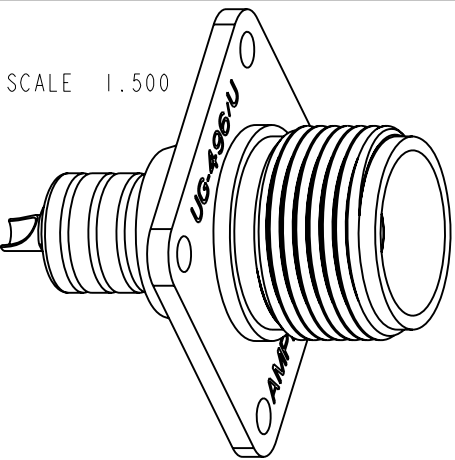


**RECOMMENDED  
MOUNTING HOLE DIMENSIONS**



THIRD ANGLE PROJ.

REVISIONS				
REV	DESCRIPTION	DATE	ECO	APPR
--	RELEASE TO MFG.	----	----	----
M	SHEET 2 ADDED; STAMP "AMPHENOL " WAS "74868 " \\RD-DMI2040501R3	19-Apr-12	48877	DH



**CUSTOMER OUTLINE DRAWING**  
ALL OTHER SHEETS ARE FOR INTERNAL USE ONLY

<p>UNLESS OTHERWISE SPECIFIED, DIMENSIONS ARE IN METRIC AND TOLERANCES ARE: &lt;0.5mm ± 0.05mm    0.5 - 6mm ± 0.1mm    6 - 30mm ± 0.2mm    30 - 120mm ± 0.3mm    ANGLES ± 1°</p> <p>NOTICE - These drawings, specifications, or other data (1) are, and remain the property of Amphenol corp. (2) must be returned upon request; and (3) are confidential and not to be disclosed to any person other than those to whom they are given by Amphenol Corp. the furnishing of these drawings, specifications, or other data by Amphenol Corp., or to any other person to anyone for any purpose is not to be regarded by implication or otherwise in any manner licensing, granting rights to permitting such holder or any other person to manufacture, use or sell any product, process or design, patented or otherwise, that may in any way be related to or disclosed by said drawings, specifications, or other data.</p>	MATERIAL	DRAWN R. MAO	DATE 27-Mar-12	TITLE TYPE HN PANEL RECEPTACLE UG-496/U		Amphenol RF <a href="http://www.amphenolrf.com">www.amphenolrf.com</a>	
		ENGINEER D. ROYCE	DATE 04-Jun-98				
	REFERENCE	APPROVED S. HSIEH	DATE 27-Mar-12	SCALE: 3.0:1.0    SHEET 2 OF 2		DRAWING NO. 82-92	
	FINISH	CAD FILE		DWG SIZE B	REV M	ITEM NO. 82-92	PART NO. 82-92