

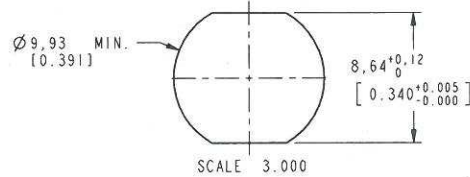
NOTES:

- MATERIALS AND FINISHES:
 - BODY, HEX NUT - BRASS, NICKEL PLATING
 - CONTACT - BERYLLIUM COPPER & BRASS, SILVER PLATING
 - INSULATOR - PTFE
 - LOCK WASHER - PHOSPHOR BRONZE, NICKEL PLATING
- ELECTRICAL:
 - A. IMPEDANCE: 50 OHM
 - B. DIELECTRIC WITHSTANDING VOLTAGE: 1500 VRMS, MAX.
- MECHANICAL:
 - A. DURABILITY: 500 CYCLES MIN.
 - B. TEMPERATURE RANGE: -65° C TO +165° C
- PACKAGING:
 - A. QUANTITY: SINGLE PACK
 - B. MARKING: BAG TO BE MARKED "AMPHENOL RF, 31-102, AND DATE CODE"
- MAX. PANEL THICKNESS=5.94mm

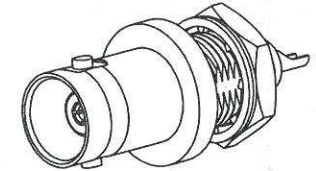
THIRD ANGLE PROJ.

REVISIONS

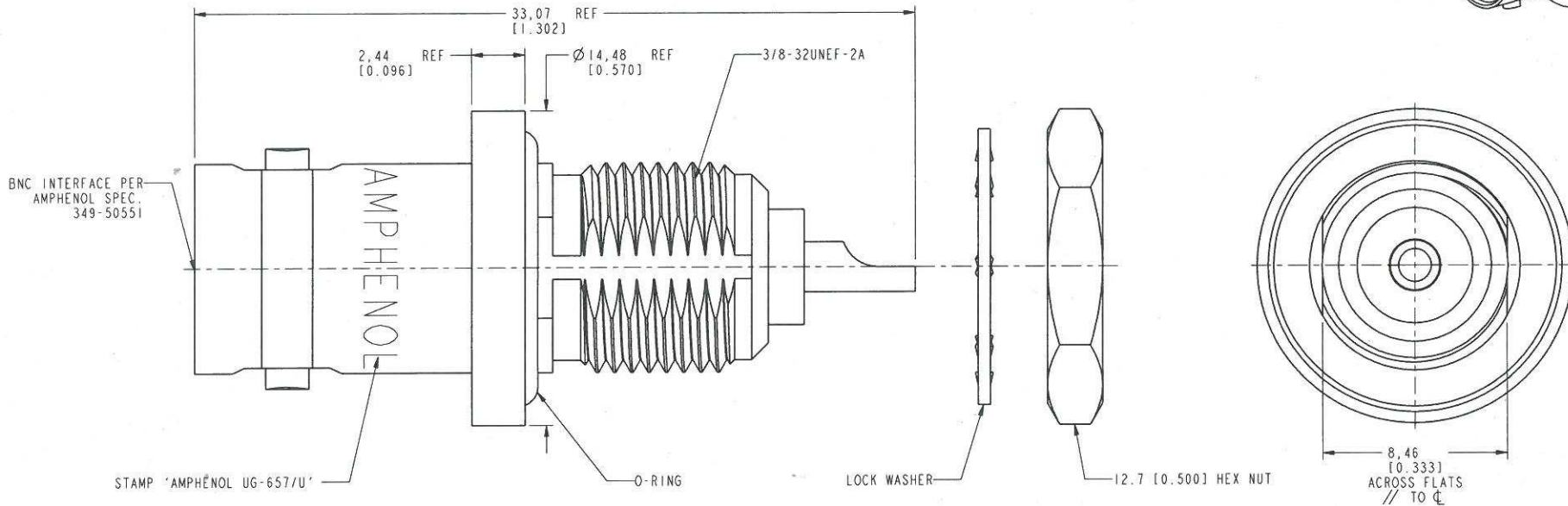
REV	DESCRIPTION	DATE	ECO	APPR
A	RELEASE TO MFG.	11/9/67	15564	
R	REDRAWN WAS 'C' SIZE, CHG'D NOTE 7; ADD NOTES 10 & 11; UPDATED PLATE CODES	4/6/78	42390	CPM/DR
T	REDRAWN IN PRO-E	7/29/09	47526	BM
U	STAMP "AMPHENOL " WAS "74868 " \RD-DM12033001R3	10/20/12	48876	LM



MOUNTING HOLE DETAIL
0.234 MAX. PANEL THICKNESS



SCALE 2.000



VIEW DOES NOT SHOW
HEX NUT, LOCKWASHER AND O-RING

CUSTOMER OUTLINE DRAWING
ALL OTHER SHEETS ARE FOR INTERNAL USE ONLY

UNLESS OTHERWISE SPECIFIED, DIMENSIONS ARE IN METRIC AND TOLERANCES ARE: <0.5mm ±0.05mm 0.5 - 6mm ±0.1mm 6 - 30mm ±0.2mm 30 - 120mm ±0.3mm ANGLES ±1°	MATERIAL	DRAWN R. MAO	DATE 02-Mar-12	TITLE BNC TYPE PANEL RECEPTACLE NICKEL PLATED UG 657/U SCALE: 5.0:1.0 SHEET 2 OF 2	Amphenol RF www.amphenolrf.com	
	NOTICE - These drawings, specifications, or other data (1) are, and remain the property of Amphenol corp. (2) must be returned upon request; and (3) are confidential and not to be disclosed to any person other than those to whom they are given by Amphenol Corp. The furnishing of these drawings, specifications, or other data by Amphenol Corp., or to any other person to anyone for any purpose is not to be regarded by implication or otherwise in any manner licensing, granting rights to permitting such holder or any other person to manufacture, use or sell any product, process or design, patented or otherwise, that may in any way be related to or disclosed by said drawings, specifications, or other data.	REFERENCE EAR # AND CONFIGURATION LEVEL: □□□□	ENGINEER D. ROYCE			DATE 1/19/91
	FINISH	APPROVED S. HSIEH	DATE 02-Mar-12	DWG SIZE B	REV U	ITEM NO. 31-102 PART NO. 31-102