

NOTES:

1. MATERIALS AND FINISHES:

BODY: BRASS, GOLD PLATING

CONTACT: BERYLLIUM COPPER, GOLD PLATING.

INSULATOR: PTFE

2. PHYSICAL:

A. OPERATING TEMPERATURE: -65°C to $+165^{\circ}\text{C}$

B. DURABILITY: 100 MATING CYCLES MINIMUM

C. INTERFACE: PROPRIETARY AFI INTERFACE

3.ELECTRICAL:

A. IMPEDANCE: 50 OHMS, NOMINAL

B. FREQUENCY RANGE: 0 TO 6 GHz

C. VSWR: $1.10 + 0.06 \times F$ (GHz) MAX, FROM 0 TO 3 GHz

0.56 + 0.24 x F (GHz) MAX, FROM 3 TO 6 GHz

D. SEE 349-50861 FOR RECOMMENDED LAUNCH

4. PACKAGING:

A. SINGLE PACK IN BAG.

B. MARK BAG OR TAG: AMPHENOL RF

920-265J-51P

DATE CODE (YYWW)

5. ADD DIM "B" FROM PLUG AND DIM "A" FROM JACK

OF TWO MATING CONNECTORS TO FIND THE

NOMINAL BOARD-TO-BOARD SPACING.

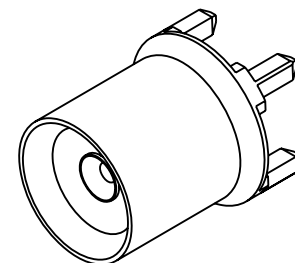
AXIAL FLOAT IS ± 0.50 [0.020"]

RADIAL FLOAT IS ± 0.38 [0.015"]

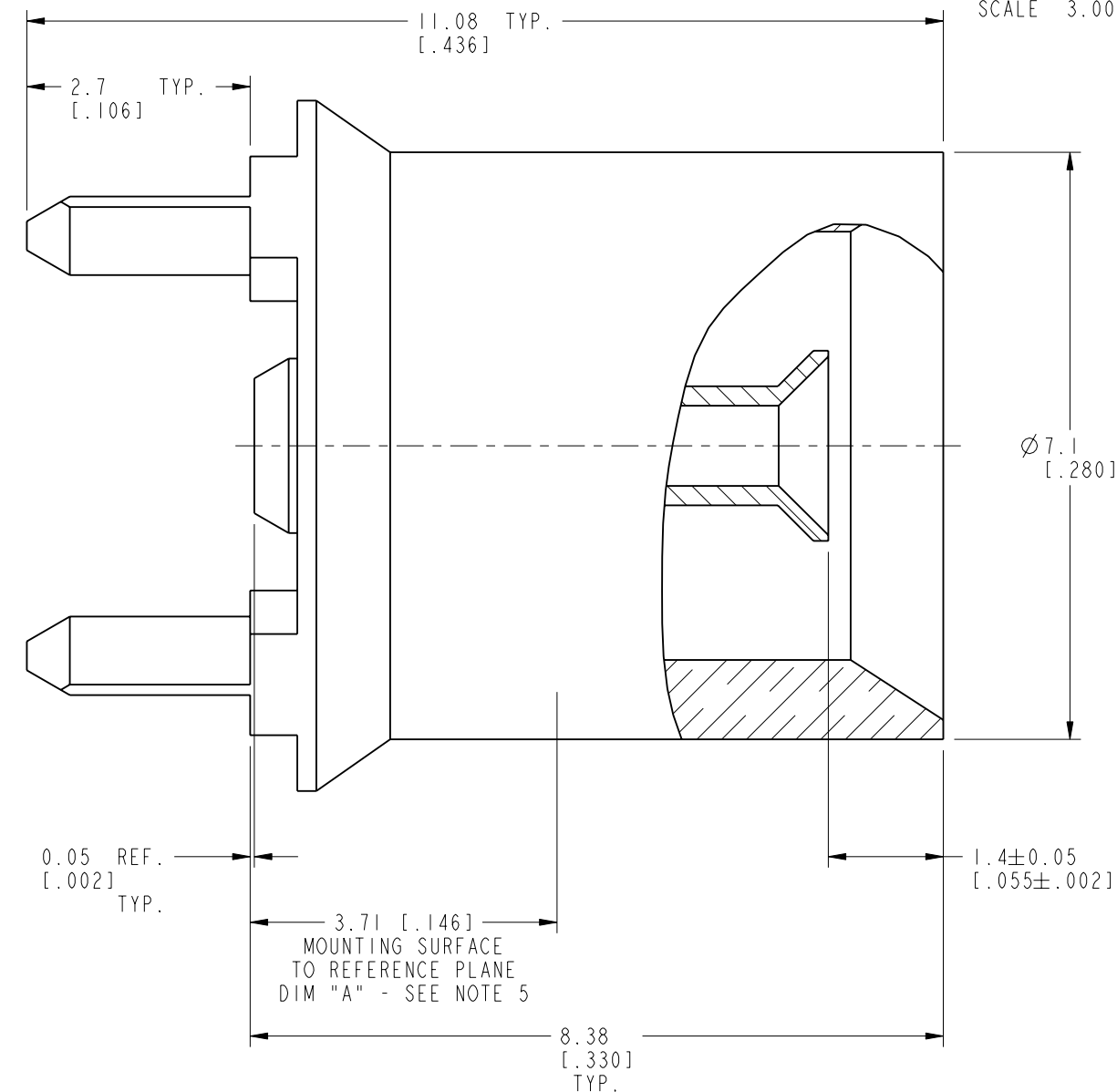
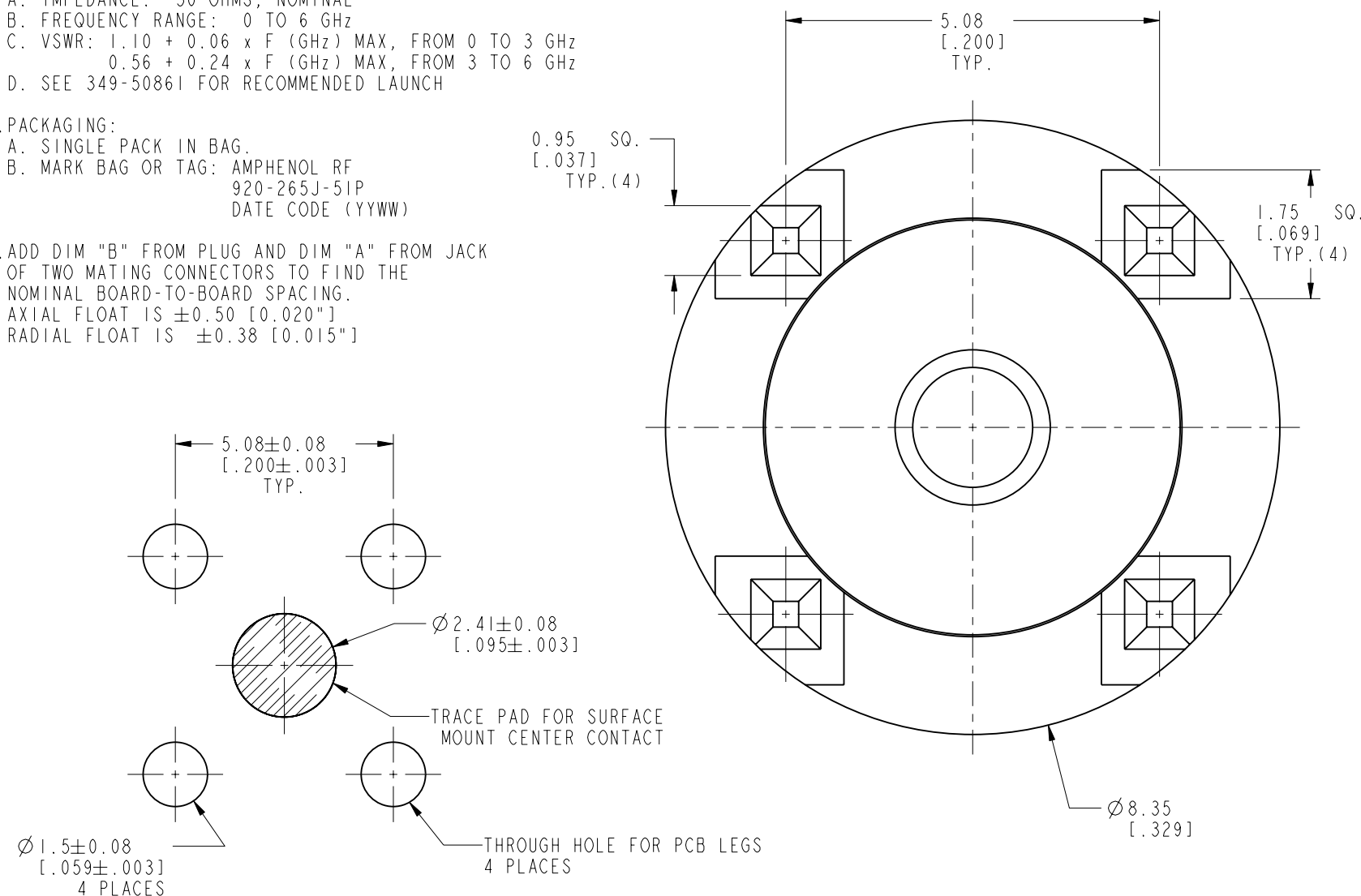
THIRD ANGLE PROJ. 

REVISIONS

REV	DESCRIPTION	DATE	ECO	APPR
A	RELEASE TO MFG.	07-Aug-13	49535	TD



SCALE 3.000



CUSTOMER OUTLINE DRAWING

ALL OTHER SHEETS ARE FOR INTERNAL USE ONLY

UNLESS OTHERWISE SPECIFIED, DIMENSIONS ARE IN METRIC AND TOLERANCES ARE: <0.5mm 0.5 - 6mm 6 - 30mm 30 - 120mm ANGLES ± 0.05mm ±0.1mm ±0.2mm ± 0.3mm ±1°		MATERIAL SEE NOTES	DRAWN ABHAYA KISHORE	DATE 07-Feb-13	TITLE AFI STR JACK PCB MOUNT		Amphenol RF www.amphenolrf.com	
NOTICE - These drawings, specifications, or other data (1) are, and remain the property of Amphenol corp. (2) must be returned upon request; and (3) are confidential and not to be disclosed to any person other than those to whom they are given by Amphenol Corp. the furnishing of these drawings, specifications, or other data by Amphenol Corp., or to any other person to anyone for any purpose is not to be regarded by implication or otherwise in any manner licensing, granting rights to permitting such holder or any other person to manufacture, use or sell any product, process or design, patented or otherwise, that may in any way be related to or disclosed by said drawings, specifications, or other data.			ENGINEER T. SMITH	DATE 07-Feb-13				
		REFERENCE EAR # 3289	APPROVED S.HSIEH	DATE 07-Aug-13	SCALE: 12.0:1.0 SHEET 2 OF 2			
		CONFIGURATION LEVEL:	CAD FILE	DWG SIZE B		REV A		
		FINISH						
					DRAWING NO. 920-265J-51P		ITEM NO. 920-265J-51P	
					PART NO. 920-265J-51P			