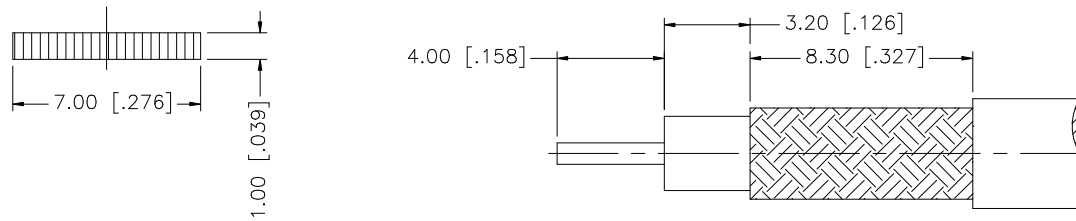
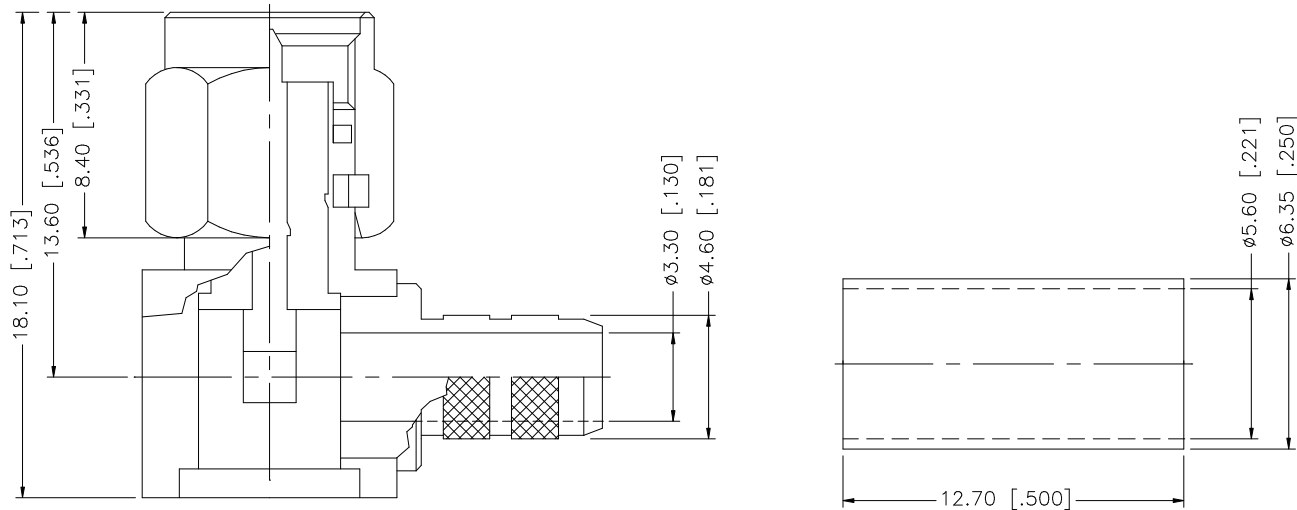


REV.	DATE	DESCRIPTION
NC	08/11/98	INITIAL RELEASE
A	07/21/05	UPDATE DRAWING FORMAT



RECOMMENDED  
CABLE STRIPPING DIM'S

REV.	DATE	DESCRIPTION
8		
7		
6		
5	FERRULE	COPPER
4	COVER	BRASS
3	CONTACT PIN	BRASS
2	INSULATOR	TEFLON
1	BODY	BRASS
	DESCRIPTION	MATERIAL
		FINISH
		QTY
<p>UNLESS OTHERWISE SPECIFIED DIMENSIONS ARE IN MILLIMETERS. DIMENSIONS IN [ ] ARE IN INCHES AND FOR CUSTOMER REFERENCE ONLY.</p> <p>UNLESS OTHERWISE SPECIFIED TOLERANCES FOR MILLIMETERS ARE:  0.5 - 8mm ± 0.20mm  8 - 30mm ± 0.40mm  30 - 120mm ± 0.50mm</p> <p>UNLESS OTHERWISE SPECIFIED TOLERANCES FOR INCHES ARE:  .020 - .315 = ± 0.007"  .315 - 1.180 = ± 0.015"  1.180 - 4.724 = ± 0.020"</p> <p>DO NOT SCALE DRAWING</p>		
APPROVALS		DATE
DRAWN	G.R.S.	07/21/05
CHECKED		
ISSUED		
SHEET	1 OF 1	
CAD FILE		C:/132/1132235.DWG
<h1 style="text-align: center;">Amphenol Connex</h1>		
PART DESCRIPTION		
SMA R/A CRIMP PLUG - LMR 200		
-		
PART NO.		
132235		
DWG. NO.	132235.DWG	REV. A
SIZE	A	SCALE NA