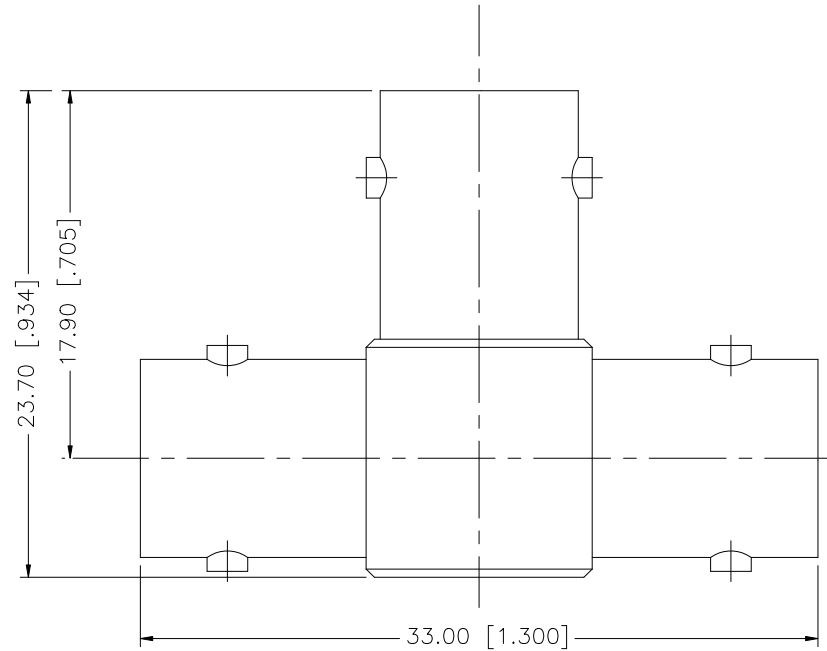


REV.	DATE	DESCRIPTION
NC	12/11/07	INITIAL RELEASE



8					<small>UNLESS OTHERWISE SPECIFIED DIMENSIONS ARE IN MILLIMETERS. DIMENSIONS IN [] ARE IN INCHES AND FOR CUSTOMER REFERENCE ONLY.</small> <small>UNLESS OTHERWISE SPECIFIED TOLERANCES FOR MILLIMETERS ARE:</small> 0.5 - 8mm ± 0.20mm 8 - 30mm ± 0.40mm 30 - 120mm ± 0.50mm <small>UNLESS OTHERWISE SPECIFIED TOLERANCES FOR INCHES ARE:</small> .020 - .315 = ± 0.007" .315 - 1.180 = ± 0.015" 1.180 - 4.724 = ± 0.020"	APPROVALS	DATE	<h1 style="color: blue;">Amphenol Connex</h1>		
7				DRAWN		G.R.S.	12/10/07			
6				CHECKED				PART DESCRIPTION BNC JACK, JACK, JACK TEE ADAPTER 75 ohm		
5				ISSUED						
4				SHEET		1 OF 1		PART NO. 112456		
3	CONTACT PIN	PHOS. BRONZE	GOLD	2	DWG. NO. 112456.DWG					
2	INSULATOR	DELTRIN	NATURAL	1	REV. NC			SIZE A	SCALE NA	
1	BODY	BRASS	NICKEL	1	CAD FILE C:/112/112456.DWG					
	DESCRIPTION	MATERIAL	FINISH	QTY	<small>DO NOT SCALE DRAWING</small>					