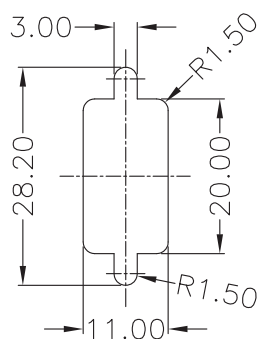


A

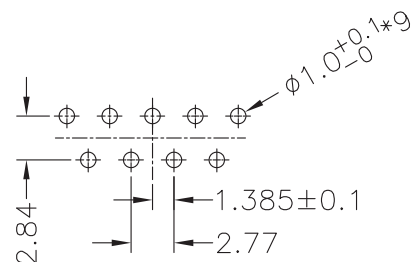
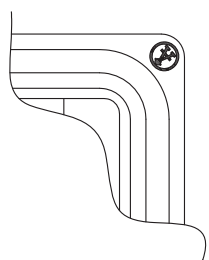


Screw L= 5.0 For Panel Thickness
Under 1.2 mm

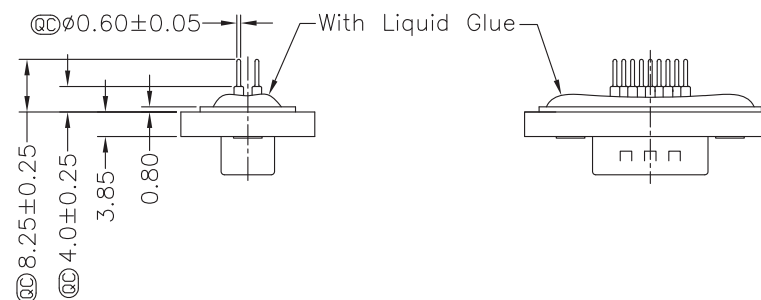
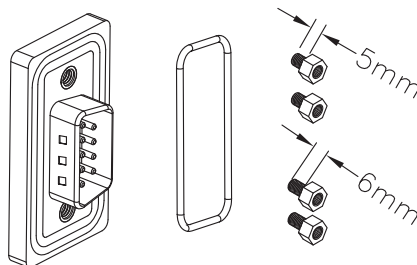
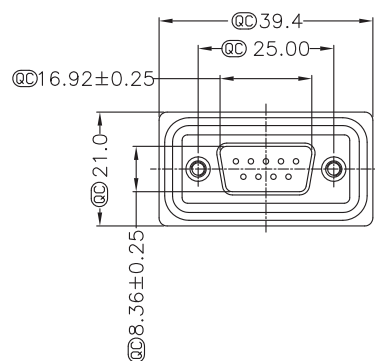
Screw L= 6.0 For Panel Thickness
Between 1.2~2.0mm



Recommended Panel Cut-Out



9 Pin Male Connector
PCB Pin Layout
Scale 2:1



Material:

- Waterproof Rate: IP68
 - IP68: 1M of depth of water 24 hours
 - Do Mating Test After Glued
- D-Sub Connector: Black Core, PBT
- Plastic Jacket: Black, Nylon+GF
- Pin: Copper Alloy, Gold Plated
- Ring: Light Blue, Silicone
- Screw: Copper Alloy, Nickel Plated, #4-40 UNC
- The 180° Board Lock Needs To Connect The Iron Shell 180°

QC Quality Control: Important Dimension to check
Unit: MM±0.1MM

A

B

C



D

E

F

G

H

Scale	1:1							Name
TOLERANCE						Drawn	11.28.11	Chappel
X.X	±0.40					Approved		
X.XX	±0.25							
X.XXX	±0.15							
Angle	±3°							
			Modification	Date	Name			



Item No.	Item Description	Unit	Quantity	Unit Price	Total Price
----------	------------------	------	----------	------------	-------------

A-DS09PP-WP-R

Title	Waterproof D-Sub Connector - Straight Pin, for PCB Mount, 9 Contacts Male
--------------	--

Drawing No.

rev00

Replace

	Sheet
--	-------