

Panel Thickness

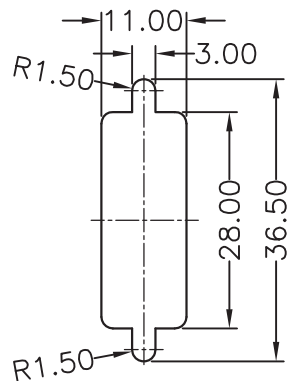
X(Max.)

Screw L=5.0 For Panel Thickness Under 1.2mm

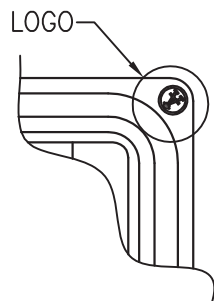
1.2mm

Screw L=6.0 For Panel Thickness Between 1.2~2.0mm

1.2~2.0mm



Recommended Panel Cut-Out



Ⓜ = Assmann logo

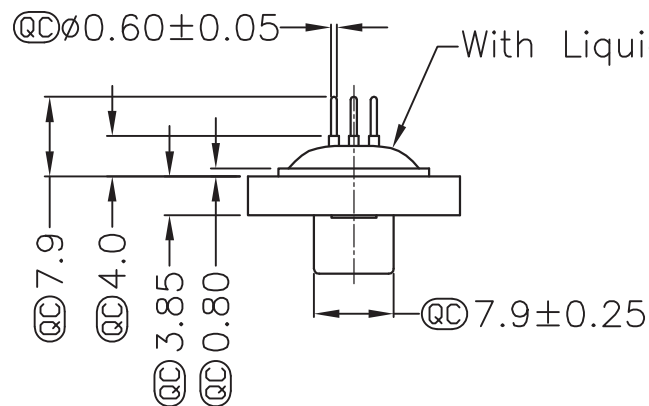
RoHS
Compliant

ITEM NO.

A-HDF-26-PP-WP-R

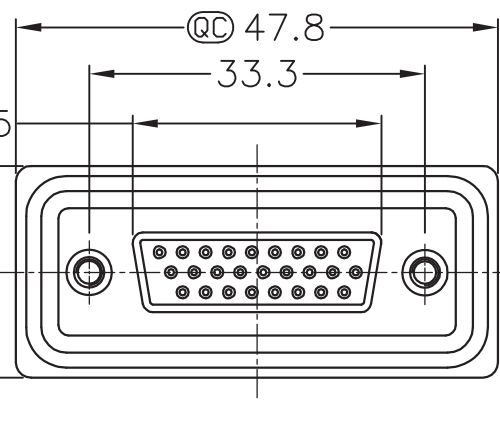
TITLE

D-Sub Waterproof - High Density, Female, 26-Pin, 180°



QC 24.66±0.25

QC 21.0



Material:

- Waterproof Rate: IP67
- Connector: Black, Nylon + GF
- Pin: Copper Alloy, Gold Plated
- Do Mating Test After Glued

ASSMANN
Electronics, Inc.

1840 W. Drake Drive, Suite 101 • Tempe, AZ 85283
Toll Free: 1-877-277-6266 • Email: info@usa-assmann.com

THIS DRAWING IS UNPUBLISHED
©Copyright 2010 by Assmann Electronic Components
All International Rights Reserved