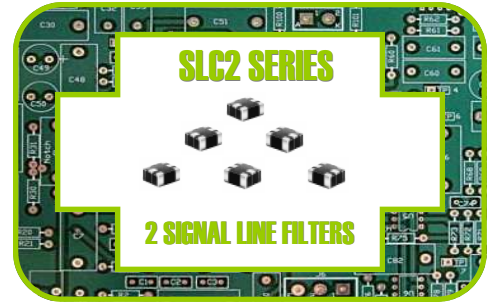


# MOX-SLC2-1210

## 2 SIGNAL LINE COMMON MODE FILTERS



**MoxiE**  
INDUCTOR CORPORATION



### Features

- RoHS Compliant.
- Low Cost.
- Custom Designs Available.
- Quick Turn Lead-times.
- Operating Temperature:  $-40^{\circ}\text{C}$   $+^{\circ}105\text{C}$ .
- Package available in 3 signal line to accommodate various designs.
- Excellent for noise suppression on any electronic device.
- Used to counter common-mode noise affecting signals within high speed lines.



## NOTES

---

---

---

---

---

---

---

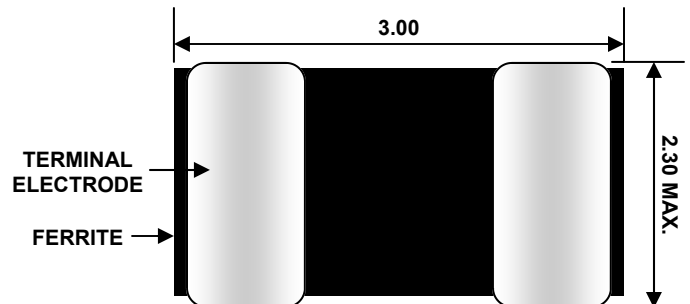
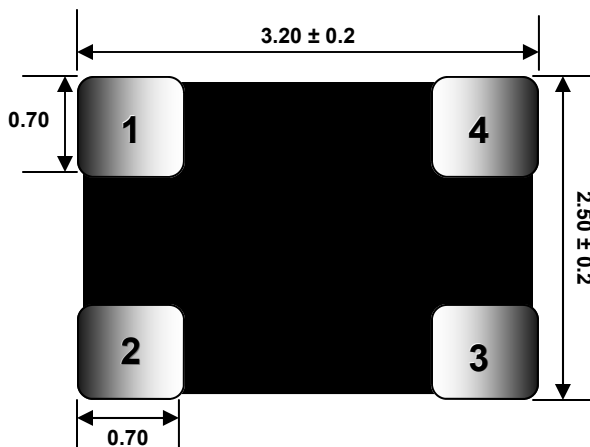
---

---

---



## MECHANICAL DIMENSIONS



MOXIE NOTE: ALL DIMENSIONS IN MM.

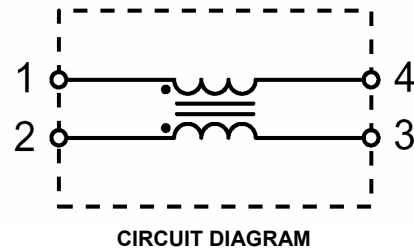
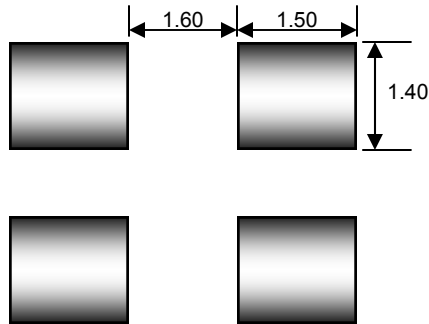
# MOX-SLC2-1210



**MoxiE**  
INDUCTOR CORPORATION



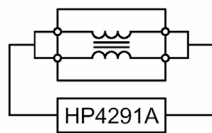
## LANDING PATTERN & SCHEMATIC



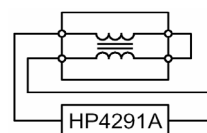
## ELECTRICAL SPECIFICATIONS

MoxiE Part Number	Impedance ( $\Omega$ ) 100 MHz	DC Resistance ( $\Omega$ Max.)	Rated Voltage Edc(V) Max.	Rated Current Idc (A) Max.	Insulation Resistance (Minimum)
MOX-SLC2-1210-800S-2P	80 $\pm$ 25%	0.15	20	0.40	10M
MOX-SLC2-1210-161S-2P	160 $\pm$ 25%	0.20	20	0.35	10M
MOX-SLC2-1210-271S-2P	270 $\pm$ 25%	0.30	20	0.30	10M
MOX-SLC2-1210-601S-2P	600 $\pm$ 25%	0.20	20	1.00	10M
MOX-SLC2-1210-102S-2P	1000 $\pm$ 25%	0.50	20	0.20	10M

COMMON MODE



DIFFERENTIAL MODE



## ENGINEERING NOTES

- All MoxiE electrical specifications are at 25°C
- Rated Current for a  $\Delta T$  of 40°C
- RoHS Compliant.
- Packaging: Tape & Reel & Bulk. (1000 pieces per reel)
- MoxiE Inductor Corporation specifications are subject to change without notice.