

MOX-CST SERIES

CST20, CST22 & CST33 THROUGH HOLE CURRENT SENSOR TRANSFORMER

MoxiE's CST20, CST22 & CST33 through hole current sensing transformers are engineered with a low profile case that mounts direct to the PCB

Features:

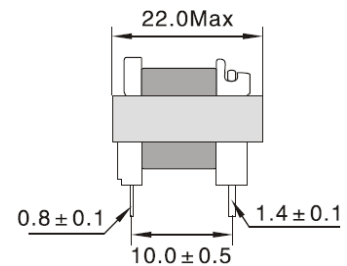
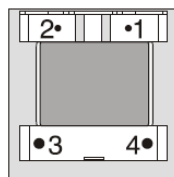
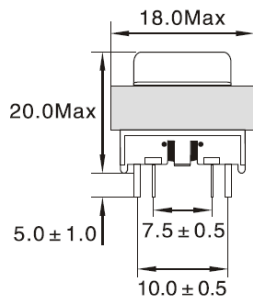
- PBT 94V0 case.
- Low cost.
- RoHS compliant.
- MoxiE custom designs available.

MoxiE
INDUCTOR CORPORATION

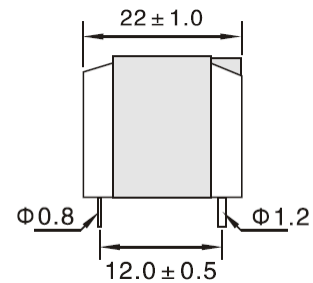
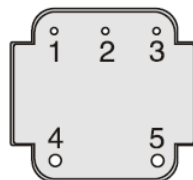
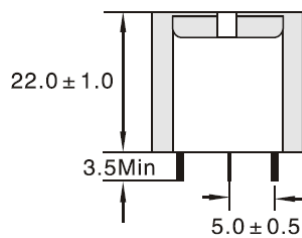


MECHANICAL DIMENSIONS

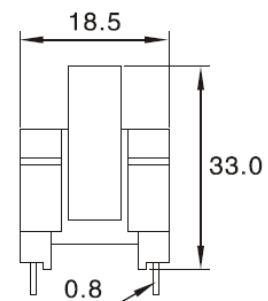
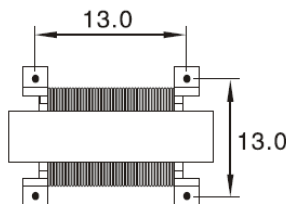
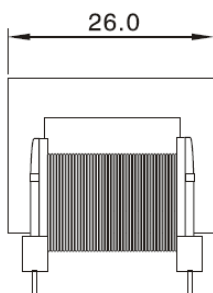
MOX-CST-20 SERIES



MOX-CST-22 SERIES



MOX-CST-33 SERIES

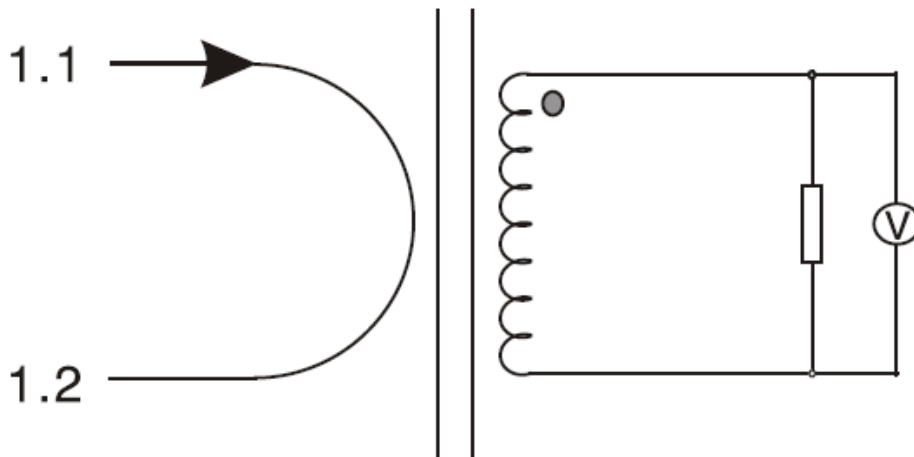


MOX-CST SERIES

CST20, CST22 & CST33 THROUGH HOLE CURRENT SENSOR TRANSFORMER



SCHEMATICS



ELECTRICAL SPECIFICATIONS

MoxiE Part Number	Rated Primary Current (A)	Max. Primary Current (A)	Rated Secondary Current (mA)	Resistance Load (Ω)	Output Ratio (V)	Accuracy Class
MOX-CST20-1	5.0	12.0	2.5	1000	2.50	1
MOX-CST20-2	5.0	15.0	5.0	100	0.50	1
MOX-CST22-1	5.0	15.0	2.0	2000	4.00	1
MOX-CST22-2	3.0	10.0	1.0	2500	2.50	1
MOX-CST33-1	5.0	20.0	2.0	1000	2.00	2
MOX-CST33-2	10.0	20.0	5.0	500	2.50	2



ENGINEERING DATA

- INSULATION RESISTANCE: 500V DC > 100M Ω .
- HI-POT: 400V 1mA 60S.
- TEMPERATURE RANGE: -25°C TO +105°C
- STORAGE TEMPERATURE RANGE: -40°C TO +105°C
- RESISTANCE TO SOLDERING HEAT: 260°C FOR 10 SECONDS
- MOXIE SPECIFICATIONS ARE SUBJECT TO CHANGE WITHOUT NOTICE.