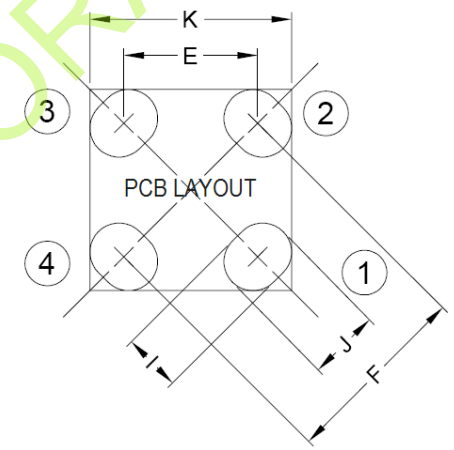
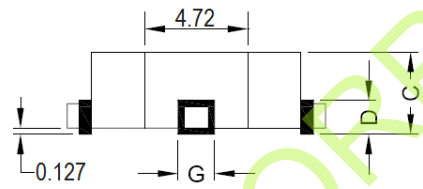
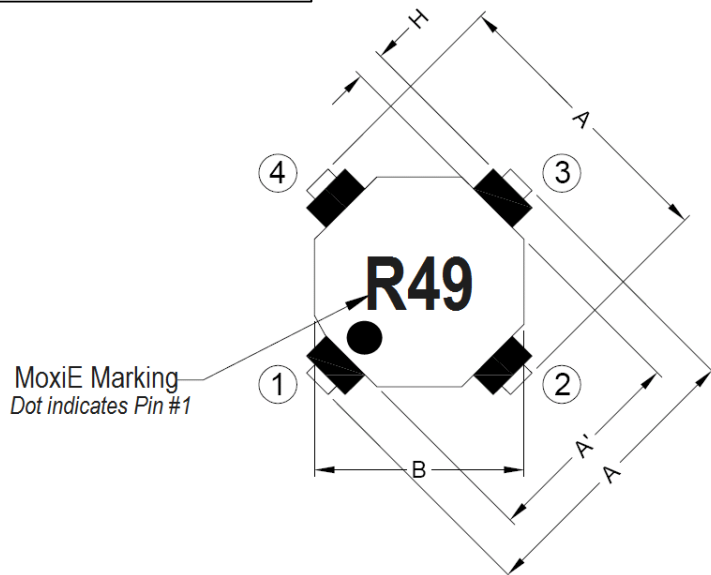


MECHANICAL



A	A'	B	C	D	E	F	G	H	I	J	K
13.97 TYPICAL	11.43 TYPICAL	11.43 TYPICAL	6.35 MAXIMUM	3.05 MAXIMUM	8.84 TYPICAL	12.50 TYPICAL	3.55 MAXIMUM	0.760 MINIMUM	3.05 TYPICAL	4.06 TYPICAL	12.50 TYPICAL

MOXIE ENGINEERING NOTES:

- Used as a single or coupled inductors or 1:1 transformer that provide isolation between windings.
- Robust four terminal pad mounting.
- Packaging: Tape & reel (600 pieces per reel)
- Operating temperature: -40°C to +105°C.
- Storage temperature: -40°C to +155°C.
- Solder reflow: +260°C maximum for ten (10) seconds maximum.
- All electrical tests performed at +25°C.
- RoHS Compliant.
- Turns ratio: 1:1
- Hi-Pot test: (N1~N2): 300VDS 1mA 1 second.
- MoxiE Inductor Corporation custom designed products are subject to United States copyright and or patent protection(s)
- MoxiE Inductor Corporation specifications are subject to change without notice.



SURFACE MOUNT POWER INDUCTORS & TRANSFORMERS

MOX-SMPI4R SERIES

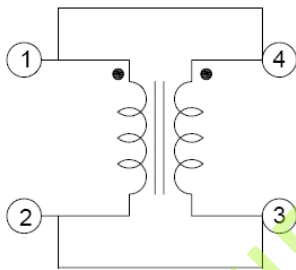
PAGE 1/2

REV. A

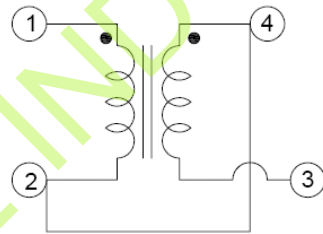
DWG NUMBER: MOX-SMPI4R

ELECTRICAL

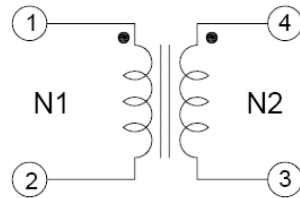
MoxiE Part Number	PARALLEL					SERIES				
	L (μH) ±20%	LIDC (μH) Min.	Test Frequency	RDC (Ω) Maximum	IDC (A)	L (μH) ±20%	LIDC (μH) Minimum	Test Frequency	RDC (Ω) Maximum	IDC (A)
MOX-SMPI4R-49M	0.49	0.37	0.25V/100kHz	0.0093	8.00	1.95	1.49	0.25V/100kHz	0.019	4.00
MOX-SMPI4R-76M	0.76	0.56	0.25V/100kHz	0.0112	7.40	3.05	2.24	0.25V/100kHz	0.023	3.75
MOX-SMPI4R-1R1M	1.10	0.81	0.25V/100kHz	0.0166	6.00	4.39	3.24	0.25V/100kHz	0.033	3.00
MOX-SMPI4R-1R9M	1.95	1.42	0.25V/100kHz	0.0274	4.70	7.81	5.69	0.25V/100kHz	0.055	2.50
MOX-SMPI4R-5R1M	5.15	3.56	0.25V/100kHz	0.0534	3.50	20.62	14.23	0.25V/100kHz	0.107	1.75
MOX-SMPI4R-7R8M	7.81	5.15	0.25V/100kHz	0.0653	3.10	31.23	20.61	0.25V/100kHz	0.131	1.60
MOX-SMPI4R-9R8M	9.88	6.70	0.25V/100kHz	0.0933	2.60	39.53	26.79	0.25V/100kHz	0.187	1.45
MOX-SMPI4R-140M	14.76	9.52	0.25V/100kHz	0.1139	2.50	59.05	38.09	0.25V/100kHz	0.228	1.25
MOX-SMPI4R-200M	20.62	13.44	0.25V/100kHz	0.1684	1.95	82.47	53.76	0.25V/100kHz	0.337	1.00
MOX-SMPI4R-250M	25.65	17.17	0.25V/100kHz	0.2306	1.70	102.60	68.68	0.25V/100kHz	0.461	0.85
MOX-SMPI4R-330M	33.21	22.93	0.25V/100kHz	0.3312	1.40	132.86	91.72	0.25V/100kHz	0.662	0.70
MOX-SMPI4R-480M	48.80	32.21	0.25V/100kHz	0.4025	1.25	195.20	128.83	0.25V/100kHz	0.805	0.65
MOX-SMPI4R-670M	67.37	43.04	0.25V/100kHz	0.4760	1.15	269.50	172.16	0.25V/100kHz	0.952	0.60
MOX-SMPI4R-990M	99.09	69.54	0.25V/100kHz	1.1300	0.78	396.38	278.15	0.25V/100kHz	2.259	0.40



PARALLEL



SERIES



TRANSFORMER



(888)535.5207 WWW.MOXIEINDUCTORS.COM

SURFACE MOUNT POWER INDUCTORS & TRANSFORMERS

MOX-SMPI4R SERIES

PAGE 2/2

REV. A

DWG NUMBER: MOX-SMPI4R