

Starter Sockets



596 Series

Specifications

Rating: 660 Watts, 250 V

Listing: UL File No. E-18121;
CSA File No. LR95423.

Mounting: Butt-on



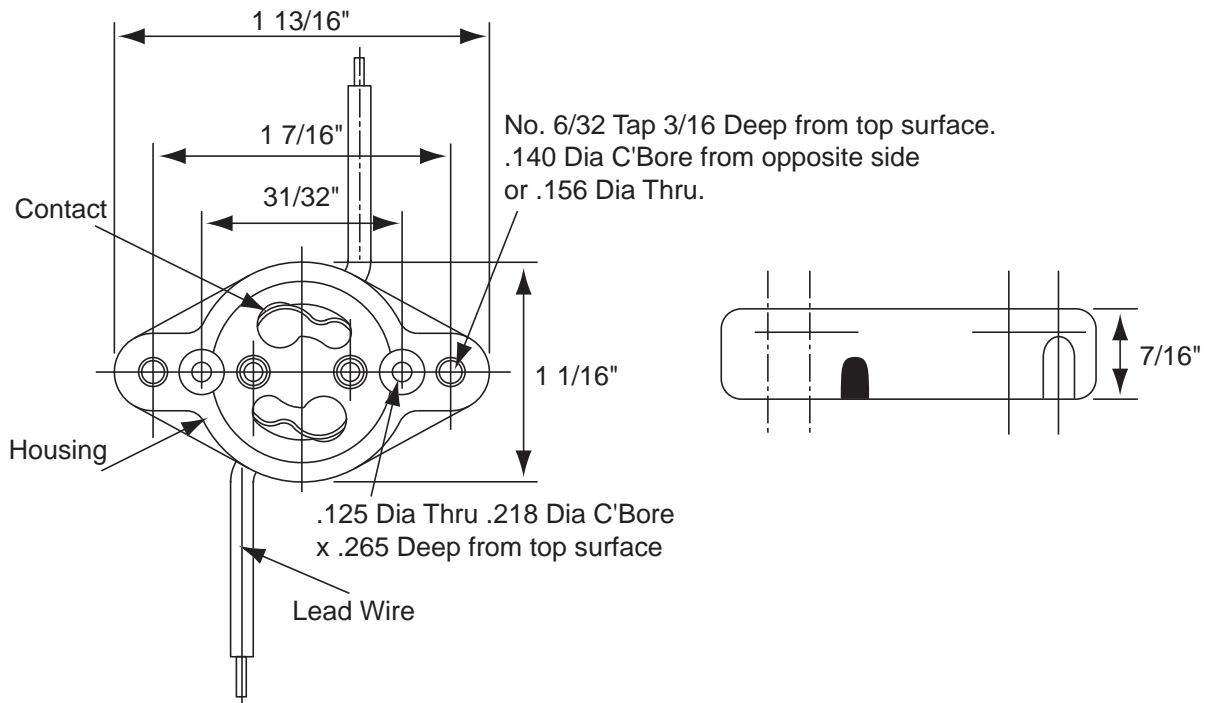
596 Series - integrally formed body of black phenolic mounting flanges.

Materials

Housing: Black phenolic

Contacts: Copper alloy.

Termination: Lead wires 9" (228.6 mm) long, 18 AWG stranded and tinned lead wires, 1/2" stripped, standard. Wire rated: AWM 600 V, 105°C (221°F).



Kulka® 596

| Part No. | Description |
|------------|--|
| 596.B* | #6-32 Tapped Thread and $\frac{1}{16}$ " Dia. thru hole, #6-32 x $\frac{1}{4}$ " screws (supplied in bulk) |
| 596.B-4" | #6-32 Tapped Thread and $\frac{1}{16}$ " Dia. thru hole, 4" lead wires with $\frac{1}{2}$ " stripped. |
| 596.BCL | $\frac{1}{16}$ " Dia. Clearance Hole |
| 596.BCL-6" | $\frac{1}{16}$ " Dia. Clearance Hole, 6" lead wires with $\frac{1}{2}$ " stripped. |

Packed 400/ box. **Special lead wire lengths available upon request, consult sales department.**

*supplied with No. 6/32 x $\frac{1}{4}$ " mounting screws in bulk (p/n 8063.208.001) where indicated.

Note: Custom fluorescent harness assemblies available.