

# Slimline Lampholders

## For 430mA Lamps



### 1575 & 1576 Series Pedestal Type Lampholders

#### Specifications

**Rating:** 1575, 1575.L: 1000 V, 660 Watts

1576, 1576.L: 600 V, 660 Watts

**Listing:** UL File No. E-13408;  
CSA File No. LR95423,  
1576.L and 1575.L versions UL listed  
and CSA certified for outdoor use **1576**  
in enclosed signs and fixtures **Stationary**

**Mounting:** Screw-on

#### Materials

**Housing:** White urea

**Contacts:** Copper alloy

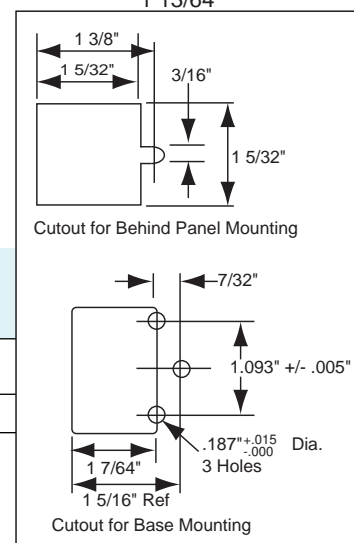
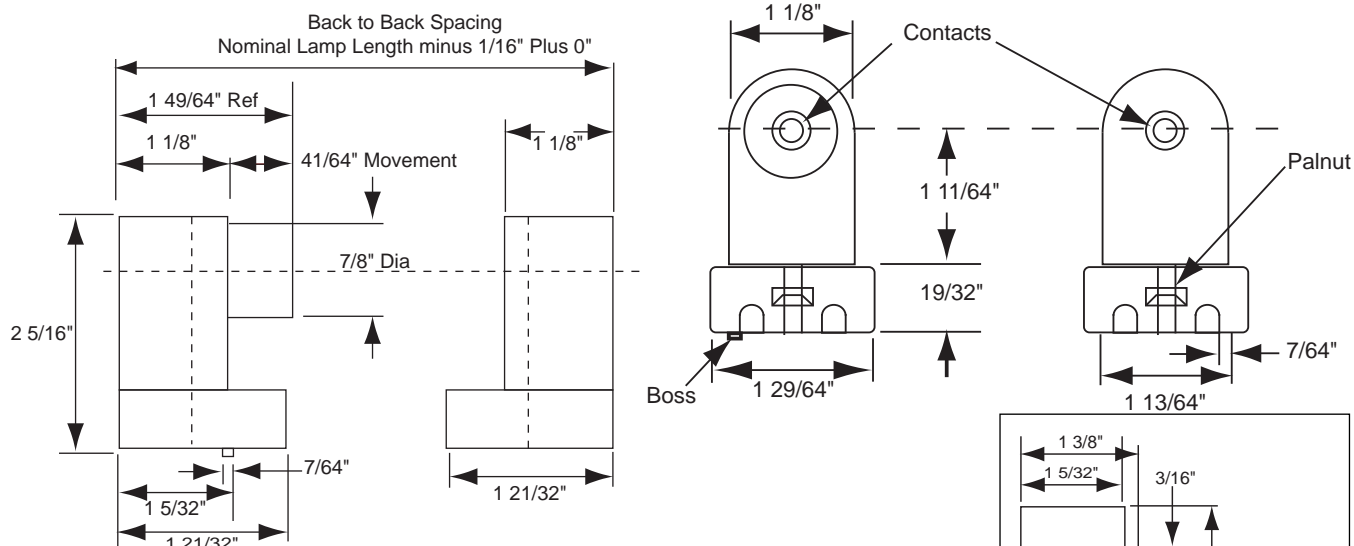
**Hardware:** 8/32 mounting nuts and  
8/32 x 1/2" screws supplied in bulk

**Termination:** "Wire fast" terminals for  
No. 18 AWG stranded (twisted, tinned and solder dipped or fused)  
or No. 18 AWG solid copper wire with 3/8" strip length.



1575

Spring Loaded



### Kulka® 1575 / 1576 Series

Spring Part No.	Stationary Part No.	
1575	1576	Wire fast
1575.L	1576.L	Wire fast, 9" (228.6 mm) long leadwires
1575.P	1576.P	Wire fast, Pre-assembled with #8-32 Palnut

Packed 1000/ box. Part No.:8063.216.001: 8/32 x 1/2" mounting screws supplied in bulk.  
Special lead wire lengths available upon request, consult sales department.