

# Medium Bi-Pin Lampholders

## Designed for U-Bend Lamps



### 1615 Series Low Profile, Straight Insertion

#### Specifications

**Rating:** 660 Watts, 600 V

**Listing:** UL File No. E-13408;

CSA File No. LR95423

**Mounting:** Slide-on for 18 or 20 gauge panels (top slot 20 gauge, bottom slot 18 gauge), or screw mount

#### Materials:

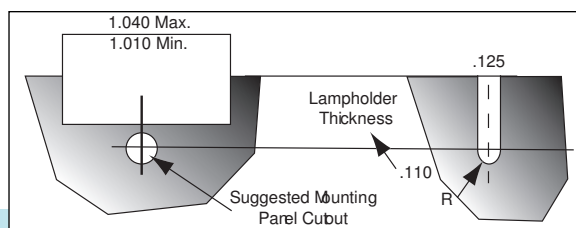
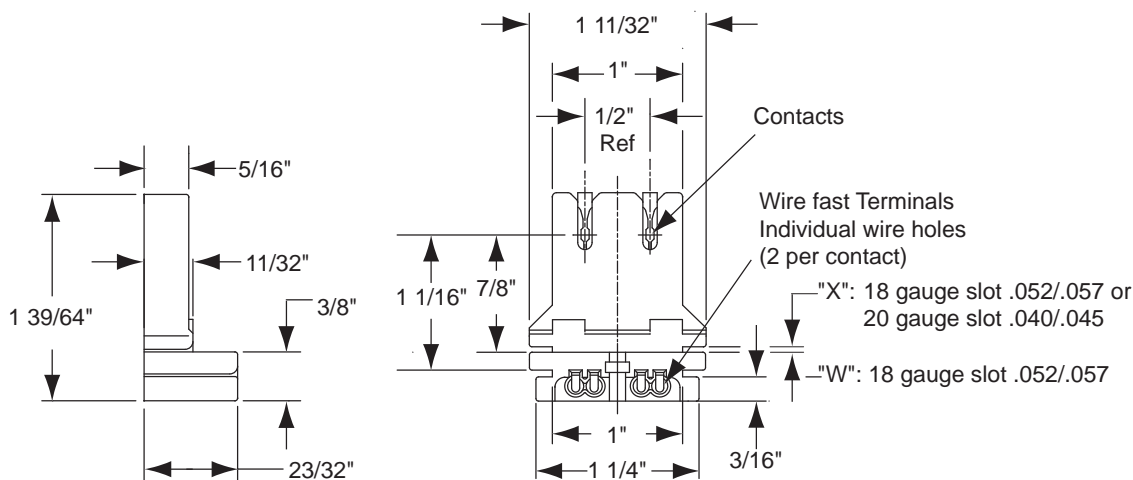
**Housing:** White urea

**Contacts:** Copper alloy, surface wipe configuration

**Termination:** "Wire fast" terminals for No. 18 AWG stranded (twisted, tinned and solder dipped or fused) or No. 18 AWG solid copper wire with 3/8" strip length.

**Special:** Item can be factory wired per customer specifications for length, strip and wire material.

1615.20



### Kulka® 1615 Series

18 gauge Panel Part No.	20 gauge Panel Part No.
----------------------------	----------------------------

1615.18	1615.20	Slide-on or screw mount
1615.18P	1615.20P	Slide-on or screw mount with pre-assembled No. 4-36 palnut
1615.18PJ	1615.20PJ	Slide-on or screw mount with pre-assembled No. 4-36 palnut and externally shunted

Packed 1250/ box. No. 4/36 x 3/8" screws supplied in bulk (p/n: 8043.612.002)