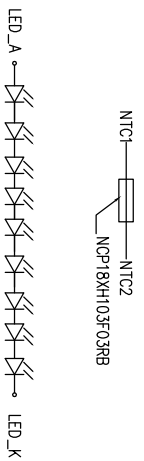
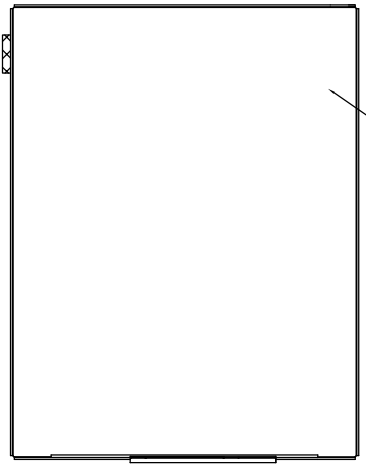
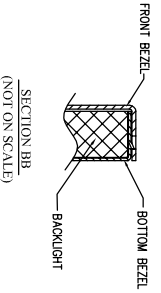
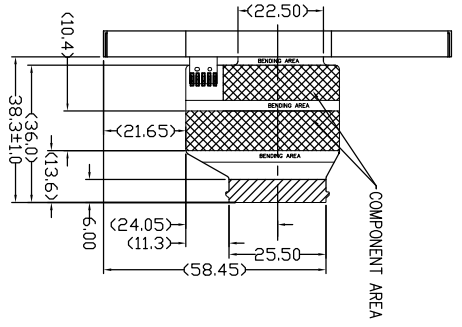
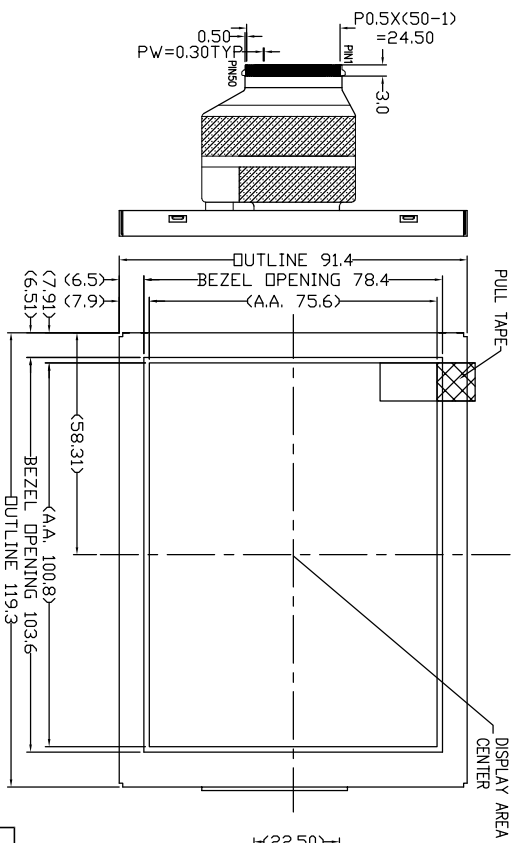
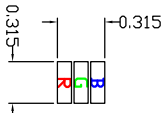
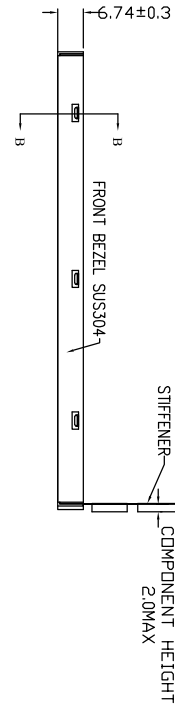


THE DRAWING ON THIS PRINT AND INFORMATION THEREWITH ARE PROPRIETARY TO VARRITRONIX AND SHALL NOT BE USED IN WHOLE OR IN PART WITHOUT WRITTEN PERMISSION OF VARRITRONIX.



PIN ASSIGNMENT

1	2	3	4	5	6	7	8	9	10
GND	PROXIMISTD	VID	HD	ENAB	GND	CLK	GND	RS	R4
11	12	13	14	15	16	17	18	19	20
R3	R2	GND	R1	R0	G5	G4	GND	G3	G2
21	22	23	24	25	26	27	28	29	30
G1	G0	GND	B5	B4	B3	B2	GND	B1	B0
31	32	33	34	35	36	37	38	39	40
GND	SD0	SD1	DNC_SCL	NC5	GND	VCC	VCI	GND	NC
41	42	43	44	45	46	47	48	49	50
NC	NTC2	NTC1	GND	LED K	NC	NC	LED A	NC	GND



DISPLAY TYPE	5.0" TRANSMISSIVE, 262K COLOURS TFT
DISPLAY RESOLUTION	240 x RGB x 320
DISPLAY MODE	NORMALLY BLACK (IPS BASED TECHNOLOGY)
INPUT VOLTAGE (VCC)	3.3V
OPERATING TEMPERATURE	-30°C to 85°C
STORAGE TEMPERATURE	-40°C to 90°C
TYPE	ACTIVE MATRIX
DRIVING METHOD (PART ONLY)	WHITE LED
LUMINANCE ON MODULE SURFACE (CD/M2)	5000 (A@31.5V(TYP))
LUMINANCE ON MODULE SURFACE (CD/M2)	4500 (TYP)

TITLE: LCM Specification
PROJECT NO.: COG-T500F2080

CUSTOMER REF:

TOLERANCE UNLESS OTHERWISE SPECIFIED:
DIMENSIONS IN MM ANGULAR ± 1°
MATERIAL: N/A FINISH: N/A
SCALE: 3D NOT ON SCALE OVERALL THK: N/A

THIRD ANGLE PROJECTION	NAME	SIGN	DATE
DRAWN:	Jackson Tang		10/12/09
CHECKED:	Y.M. Chan		
APPROVED:	Leo Chow		

ITEM NO.: COG-T500F2080-11
DESCRIPTION: COG-T500F2080-11 SPEC
FILE NO.: COG-T500F2080-11 REV: 0
SHEET 1 OF 1

VARRITRONIX LIMITED

- NOTES:
- 1 ∅ : SPECIAL CHARACTERISTIC
 - 2 + : SAFETY CHARACTERISTIC
 - 3 ∇ : CRITICAL DIMENSION
 - 4 () : REFERENCE DIMENSION