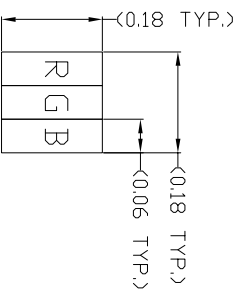
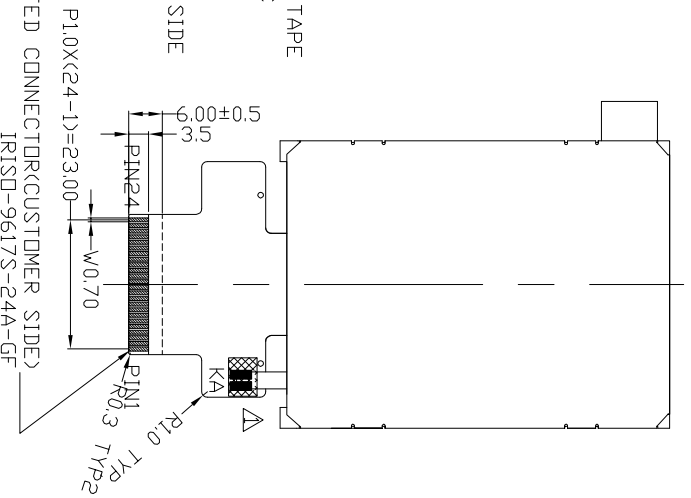
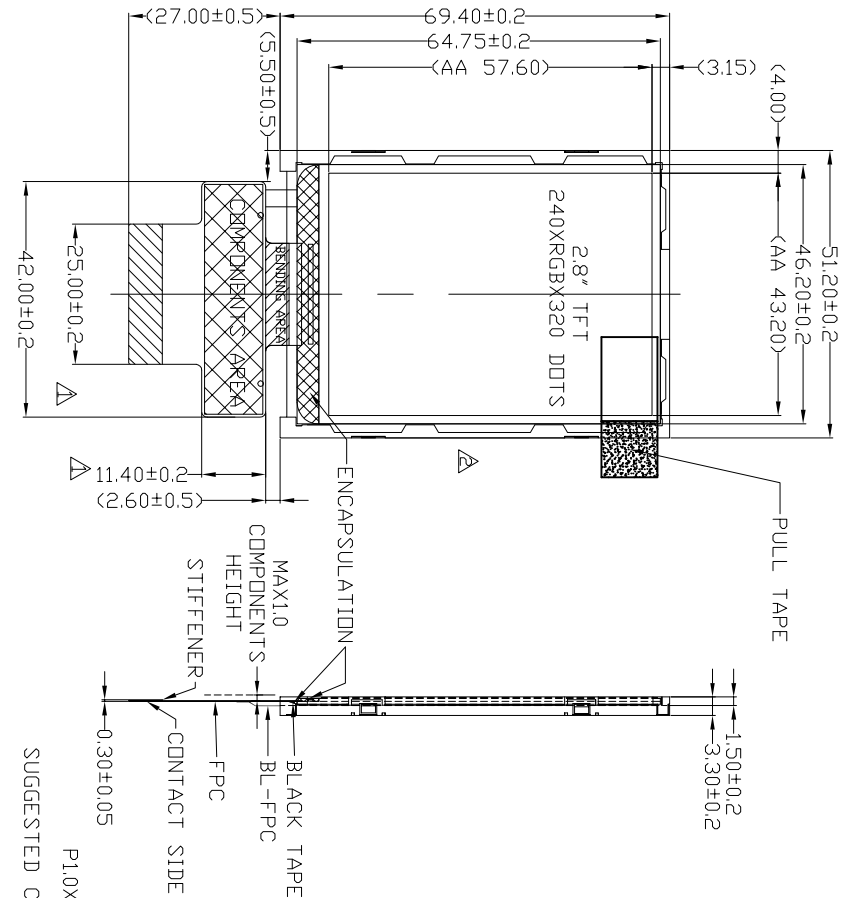


THE DRAWING OR THIS PRINT AND INFORMATION THEREON ARE PROPRIETARY TO VARRITRONIX AND SHALL NOT BE REPRODUCED IN WHOLE OR IN PART WITHOUT THE WRITTEN PERMISSION OF VARRITRONIX.

PRELIMINARY



PIXEL DETAIL
SCALE 100:1

DISPLAY TYPE	2.8"COLOR TFT,NORMALLY BLACK,TRANSMISSIVE
DISP.LAY RESOLUTION	240(R)X320(B)
VIEWING ANGLE(U/L/R)	80/80/80(TYP.)
LED TYPE	1X1S 4+2P
LED DRIVER	1X1S 4+2P
LED INTERFAC	RGB SERIAL
OPER. VOLTAGE	2.8V(TYP.)
OPERATION TEMPERATURE	-30°C to +70°C
STORAGE TEMPERATURE	-30°C to +80°C
BACKLIGHT	TYPE: LED COLOR: WHITE DRIVING CONDITION: TBD

TITLE: ICM Module Specification

PROJECT NO.: COG-T280V6080

CUSTOMER REF.: COG-T280V6080

TOLERANCE UNLESS OTHERWISE SPECIFIED:
XXX ±0.1
ANGULAR ±1°

MATERIAL: N/A FINISH: N/A
SCALE: 3D NOT IN SCALE OVERALL THK: N/A

THIRD ANGLE PROJECTION

NAME	SIGN	DATE
DRAWN: SHAWN XU		10.06.07
CHECKED: ROCK YAN		
APPROVED: PRITT LEE		

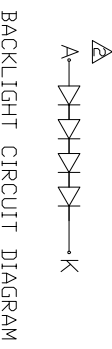
ITEM NO.: COG-T280V6080-02

DESCRIPTION: COG-T280V6080-02 SPEC

FILE NO.: COG-T280V6080-02 R2/REV: 2

PIN ASSIGNMENT

1	2	3	4	5	6	7	8	9	10
A	K	GND	GND	GND	GND	VDD	CS	RS	W/R/SCL
11	12	13	14	15	16	17	18	19	20
RD	SDA	D10	D11	D12	D13	D14	D15	D16	D17
21	22	23	24						
RESET	NC	IM2*	NC						



BACKLIGHT CIRCUIT DIAGRAM

- NOTES:**
- 1. SPECIAL CHARACTERISTIC
 - 2. SAFETY CHARACTERISTIC
 - 3. CRITICAL DIMENSION
 - 4. REFERENCE DIMENSION

VARRITRONIX LIMITED