

Encoder Switch

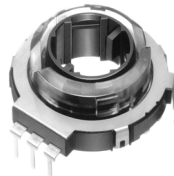
SSS-30MD, SSS-42MD, SSS-39MD, Series

Features

- ◇A hollow shaft type encoder.
- ◇Superb reliability by our own sliding contacts mechanism.
- ◇A good click feeling.
- ◇Please consult with us about the cap style beforehand.



SSS-30MD



SSS-42MD

Actual size



SSS-39MD

Applications

- ◇VTR FAX COPY CAR STEREO

Products Line

No	Products No	Number of detent	Output code	Rotational torque	Recommended Thickness of P-C-B	Features
1	SSS-30MD	20	10 Pulse (Phase shift)	7 +or- 3 mN-m	1mm	LED type
2	SSS-42MD				1mm	
3	SSS-39MD	16	16 Pulse (Phase shift)	5 +or- 2 mN-m	1mm	

Typical Specifications

Item	Specifications
Ratings(max)(Resistive load)	10mA 5V DC
Operating life	50,000 cycles
Operating temperature range	-10 +or- 2 to 60 +or- 2 degree Celsius
Storage temperature range	-20 +or- 2 to 70 +or- 2 degree Celsius

