

# Detector switch SSS-19 series

## Features

- ◇ Superb reliability by our own sliding contacts mechanism.
- ◇ Light operating force for paper detection.
- ◇ Gold plated contact with high environment resistance is available.
- ◇ A wide variety of operation components.
- ◇ Suitable connector : Molex Japan SD-52484-0210



## Applications

- ◇ Fax paper detection for printers, etc.

## Products Line

No.	Products No.	No. of circuits	No. of contacts	Contact material	Fixing method	Connection method
1	SSS-19-2AU	1	1	Gold	Snap in	Connection of connector
2	SSS-19-3			Silver		

## Typical Specifications

Item	Specifications
Max rating(Resistive load)	20 mA 5 V DC
Operating life	100,000 cycles
Contact resistance(before / after)	1 ohm max./ 10 ohm max.

## Dimensions

Unit : mm

No	Style
1	<p>SSS-19-2AU</p>

# SSS-19 series

Dimensions

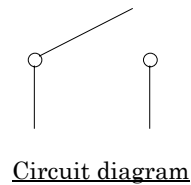
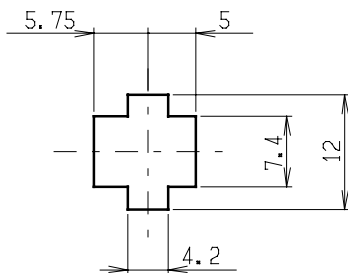
Unit : mm

No	Style
2	<p>SSS-19-3</p>

P.C.B reference mounting hole Dimensions , Circuit diagram

◇ P.C.B reference mounting hole Dimensions (TOP VIEW)

◇ Circuit diagram



Notes

1. The appearance and specifications of the product may be modified without prior notice to improve its performance.
2. This catalog shows only outline specifications. When using the product, please obtain formal specifications.
3. Regardless of the applications of these products being introduced in this catalog, when using them for equipments and devices requiring a high degree of safety, respective manufacturers shall preserve the safety of the planned equipments and devices by providing necessary protective and redundancy circuits and reconfirm if safety is being duly preserved.
4. Custom-made of the knob style is possible and please feel to contact us beforehand.
5. This switch is not washable.