

# Detector switch SSS-15 Type

## Features

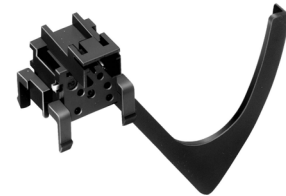
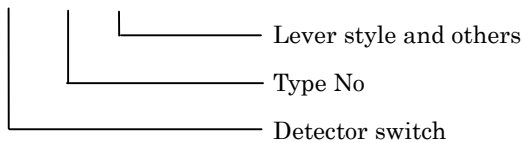
- ◇ Superb reliability by our own sliding contacts mechanism.
- ◇ Light operating force for paper detection.
- ◇ A wide variety of actuator style.
- ◇ Suitable connector : Molex Japan SD-52484-0210

## Applications

- ◇ FAX Paper detection for printers, etc

## Product number

SSS - 15 - [ ] [ ]



Actual size

## Typical Specifications

Item	Specifications
Ratings ( max ) ( Resistive load )	20mA 5V DC
Operating life	100,000 cycles
Contact resistance ( before / after )	1 ohm max. / 10 ohm max.
Conection method	Connection of connector

## Dimensions

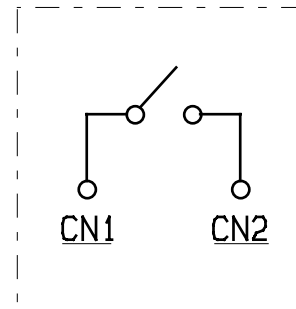
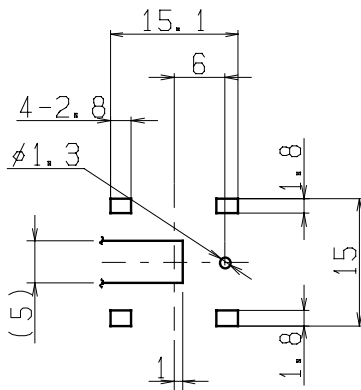
Unit : mm

No	Style
1	<p>SSS-15</p> <p>Technical drawing of the SSS-15 detector switch showing dimensions and actuator style. The drawing includes a top view, a side view, and a perspective view of the actuator. Key dimensions include: 15, 7.3, 2, 4.5, 5.5, 5, 4, 12, 10.6, (2), (Knob fulcrum), R4, 1.5, 47°, 80° (TTP), 30°, 27.52, 6, 4.5, 9.3, 25.9, 28.8, 12.75, 0.5, 15, 0.5, 6.6 (Union size), 1.5, 1.2, 3.2, and 1.2. Labels include CN1, CN2, and (ON POSITION).</p>

□ P.C.B mounting hole Dimensions / Circuit diagram

◇PCB:t=1.2mm

◇Circuit diagram



□ Notes

- 1 The appearance and specifications of the product may be modified to improve its performance without prior notice.
- 2 This catalog shows only outline specifications. When using the product, please obtain formal specifications.
- 3 Please see appendix [Cautions in Using Switches ].
- 4 This lever switch is not washable.
- 5 Soldering shall be done with lever at free position and take care not to attach flux on plastic portion.
- 6 Note that if the stress is applied to the terminals during soldering, they might cause deformation and defects in electrical performance.
- 7 In manual soldering, consideration should be given to apply the soldering iron to the tip of the terminal so that unusual pressure is not applied to the terminal
- 8 In case circuit and software design consideration against chattering and bouncing shall be taken as below.
  - Read a few times (Ex. 5ms for 5 times)
  - Set delay time.
  - Set integral circuit.
- 9 As to threshold voltage, center setting is recommended.
- 10 Care shall be taken not to apply stress to the body of switch as it may affect the performance.
- 11 Please confirm the performance on actual operation by simulation with actual environment environments for high reliability.