

# Customer Information Sheet

DRAWING No.: M80-798XXXX

SHEET 2 OF 2

IF IN DOUBT - ASK

©

NOT TO SCALE

THIRD ANGLE PROJECTION

ALL DIMENSIONS IN mm

## SPECIFICATION:

### MATERIAL:

MOULDING = GLASS-FILLED POLYAMIDE 46 UL94V-0, BLACK

CLIP = BERYLLIUM COPPER

SHELL = BRASS

### FINISH (ALL OVER NICKEL):

#### CONTACTS:

01 = 0.30 $\mu$  GOLD CLIP, 4.0 $\mu$  100% TIN SHELL

05 = 0.30 $\mu$  GOLD CLIP, 0.28 $\mu$  GOLD SHELL

### ELECTRICAL:

CURRENT RATING AT 25°C = 3.0A MAX

CURRENT RATING AT 85°C = 2.2A MAX

WORKING VOLTAGE = 120V AC/DC

VOLTAGE PROOF = 360V AC/DC

#### CONTACT RESISTANCE:

INITIAL = 20m $\Omega$  MAX

AFTER CONDITIONING = 25m $\Omega$  MAX

#### INSULATION RESISTANCE:

INITIAL = 1000M $\Omega$  MIN

AFTER CONDITIONING = 100M $\Omega$  MIN

### MECHANICAL:

DURABILITY = 500 OPERATIONS

INSERTION FORCE = 2.8N MAX, 1.0N MIN

WITHDRAWAL FORCE = 1.8N MAX, 0.2N MIN

### ENVIRONMENTAL:

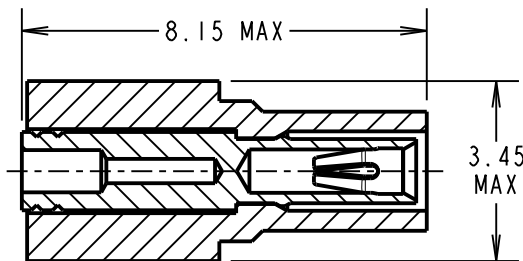
TEMPERATURE RANGE = -55°C TO +125°C

### PACKING:

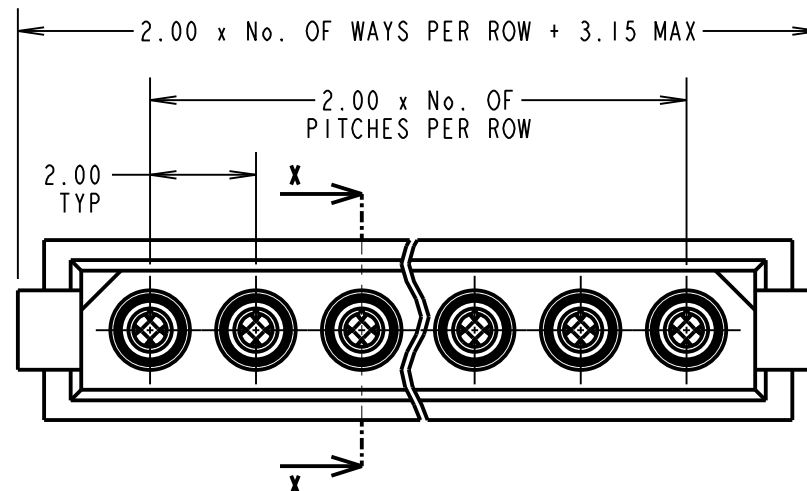
BAG (CONTACTS AND MOULDINGS UN-ASSEMBLED)

FOR COMPLETE SPECIFICATION, SEE COMPONENT

SPECIFICATION C005XX (LATEST ISSUE)



SECTION X-X



## NOTES:

- RECOMMENDED WIRE TYPE = PTFE INSULATED, 28 - 32 AWG BS3G210 TYPE A OR MIL-W-16878 TYPE ET WIRE.  
MAX INSULATION DIAMETER =  $\varnothing$ 0.75mm, STRIP WIRE BY 2.00mm.
- RECOMMENDED HAND CRIMP TOOL = M22520/2-01 WITH POSITIONER T5747. REFER TO M22520/2-01 INSTRUCTION SHEET FOR COMPLETE CRIMPING INSTRUCTIONS.
- CONTACT INSERTION AND EXTRACTION TOOL = Z80-280.
- FOR EXTRA CONTACTS, USE ORDER CODE:  
M80-0190001 FOR M80-798XX01 & M80-0190005 FOR M80-798XX05

ORDER CODE:

**M80-798XXXX**

TOTAL No. OF WAYS: \_\_\_\_\_  
02 - 07, 17 & 22

FINISH \_\_\_\_\_

01 = GOLD CLIP, TIN SHELL  
05 = GOLD CLIP, GOLD SHELL

SB	3	27.01.12	11637
NAME	ISS.	DATE	C/NOTE
APPROVED: S.BENNETT			
CHECKED: S.FLOWER			
DRAWN: S. MCCULLAGH			
CUSTOMER REF.:			
ASSEMBLY DRG:			

# HARWIN

www.harwin.com  
technical@harwin.com

THIS DRAWING AND ANY INFORMATION OR DESCRIPTIVE MATTER SET OUT HEREON ARE CONFIDENTIAL AND COPYRIGHT PROPERTY OF THE HARWIN GROUP AND MUST NOT BE DISCLOSED, LOANED, COPIED OR USED FOR MANUFACTURING, TENDERING OR FOR ANY OTHER PURPOSE WITHOUT THEIR WRITTEN PERMISSION.

### TOLERANCES

X. =  $\pm$ 1mm  
X.X =  $\pm$ 0.25mm  
X.XX =  $\pm$ 0.10mm  
X.XXX =  $\pm$ 0.01mm

ANGLES =  $\pm$ 5°

UNLESS STATED

### MATERIAL:

SEE ABOVE

FINISH: SEE ABOVE

S/AREA: mm<sup>2</sup>

TITLE: DATAMATE CRIMP SIL  
SOCKET ASSEMBLY  
EXTRA SMALL BORE (28 - 32AWG)

DRAWING NUMBER:

**M80-798XXXX**

SHT  
2  
OF  
2