

Size: 4.25 x 2.5 x 1.24"

Features:

- * Universal AC Input (90-264 VAC)
- * Small 4.25 x 2.5 x 1.24" Open Frame Package
- * Worldwide Safety Approvals
- * EN55022 & FCC Class B Emissions
- * CE Mark

Input

Input Voltage 90-264 VAC
 Input Frequency 47-63Hz
 Inrush Current 25A Max @ 264 VAC Cold Start
 Input Current 0.7A @ 115 VAC / 0.3A @ 230 VAC Typical
 Hold-Up Time 18ms @ 115 VAC / 90ms @ 230 VAC Full Load
 Leakage Current <300 μ A @ 230 VAC

General

Efficiency 75-85% Typ.
 Switching Frequency Fixed Frequency 60KHz
 Operating Temperature 0 to 50°C full load, derate 2.5% per °C to 70°C max.
 Storage Temperature -20°C to +85°C
 Cooling Convection Cooled or 20 cfm airflow (see output table)
 Temp Co-Efficient 0.04% per °C
 Toplogy Fixed Frequency Flyback

Output

Minimum Load 20% of V1 for Dual Output Models only
 Line Regulation \pm 0.1% typ.
 Load Regulation V1 = \pm 2% typ, V2 & V3 = \pm 5% typ
 Ripple & Noise \pm 1% typ. pk-pk @ 20MHz
 Overload Protection 125-150% of max power
 OverVoltage Protection 124% (\pm 8%)
 Adjustment V1 only, -10 / +24% (or OVP Trip Point)
 Transient Response voltage returns < 3mS following a 50% load change

EMC & Safety

Emissions EN55022 "B", FCC Class B

Safety Approvals UL/cUL 1950
 IEC950
 CE Mark (LVD)

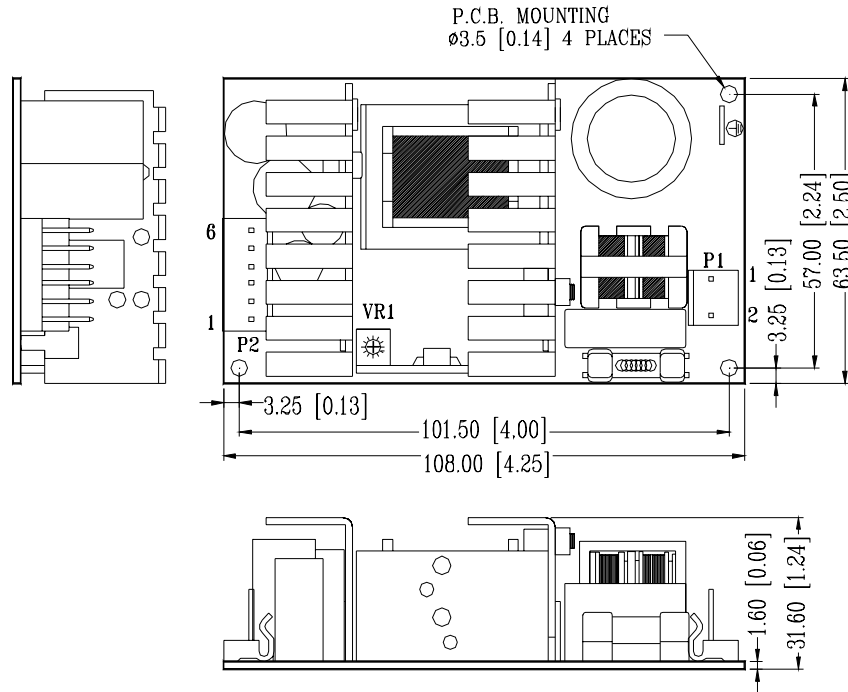


Model Number	Outputs	Model Number	Outputs
APS41VI-10	5V @ 8/9/10A	APS41VI-30	+5V@4/4.5/6A +12V @ 2/3/3A 12V @ 0.2/0.5/1A
APS41VI-11	12V @ 3.3/4/4.5A	APS41VI-31	+5V@4/4.5/6A +12V @ 2/3/3A -5V @ 0.2/0.5/1A
APS41VI-12	15V @ 2.6/3.3/3.6A	APS41VI-32	+5V@4/4.5/6A +24V @ 0.5/1/1A -12V @ 0.2/0.5/1A
APS41VI-13	24V @ 1.6/2/2.5A	APS41VI-33	+5V@4/4.5/6A +15V @ 1.6/2/2A 15V @ 0.2/0.5/1A
APS41VI-14	30V @ 1.28/1.8/2A	APS41VI-33A	+5V@1/1.5/2A +15V @ 0.5/0.8/1A 15V @ 0.5/0.8/1A
APS41VI-16	48V @ 0.8/1/1.1A	APS41VI-390	+3.3V@4/4.5/6A +5V @ 1.8/2/2.2A -12V @ 0.2/0.5/1A
APS41VI-19	3.3V@8/9/10A	APS41VI-391	+3.3V@4/4.5/6A +5V @ 1.8/2/2.2A -5V @ 0.2/0.5/1A
APS41VI-20	5V@6/7/8A 5V @ 2/2.5/3A		
APS41VI-21	5V@4/4.5/6A 12V @ 2/2.5/3A		
APS41VI-22	5V@4/4.5/6A 15V @ 1.5/2/2A		
APS41VI-23	5V@4/4.5/6A 24V @ 1/1.5/1.5A		
APS41VI-24	12V@1.8/2/2.2A 12V @ 1.8/2/2.2A		
APS41VI-290	3.3V@5/6/7A 5V @ 1.8/2/2.2A		

First Amperage rating is convection cooled operation, 2nd is with 20 cfm, 3rd is peak load (not to exceed 60 secs or 5% duty cycle)
 Load regulation for APS41VI-290, APS41VI-390 & APS41VI-391 is 10%.

Add Suffix "-G" for Gaming Applications (< 500uA Leakage Current & Class A Emissions)

Mechanical Details



Notes

WEIGHT: PCB Version = 169g (5.96Oz)

INPUT & OUTPUT CONNECTORS PIN ASSIGNMENT:

INPUT: AC LINE = P1-L / AC NEUTRAL = P1-N / FAST-ON = GROUND
 SINGLE OUTPUT ASSIGNMENTS: P2-1,2,3 = V1 / P2-4,5,6 = COMMON
 DUAL OUTPUT ASSIGNMENTS: P2-1 = V2 / P2-2,3 = V1 / P2-4,5,6 = COMMON
 TRIPLE OUTPUT ASSIGNMENTS: P2-1 = V2, P2-2,3 = V1 = P2-6 = V3, P2-4,5 = COMMON

P1 & P2 = Molex 5195 or equivalent