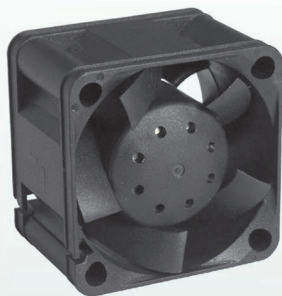


Click Here To Buy Now From The Y.S. Tech USA Online Store



# 40x40x28mm

- Airflow: 10.3~25.9 CFM
- Static Pressure: 7.9~39.0 mm-H<sub>2</sub>O
- Blade / Housing: Plastic Material UL 94V-0 P.B.T.
- Lead Wire: UL1007 #26 AWG
- Weight: 45.1 g

Model No.	Bearing	Rated Voltage VDC	Operating Voltage Range VDC	Speed RPM	Max. Airflow CFM	Max. Static Pressure mm-H <sub>2</sub> O	Current mA	Power Consumption W	Life at 40°C L10 Hour	P-Q Curve	Noise Level dB(A)
XYW04028012BL-Q	2B	12	7~13.2	5000	10.3	7.9	90	1.08	80000	7	24.5
XYW04028012BM-Q	2B		7~13.2	7000	13.0	12.0	150	1.80	80000	6	34.5
XYW04028012BH-Q	2B		7~13.2	8000	14.4	14.6	180	2.16	75000	5	37.5
XYW04028012BS-Q	2B		7~13.2	9500	16.5	18.9	260	3.12	65000	4	41.0
XYW04028012BSE-Q	2B		7~13.2	11000	19.0	26.2	460	5.52	65000	3	47.0
XYW04028012BSS-Q	2B		7~13.2	13000	21.4	31.9	550	6.60	65000	2	49.5
XYW04028012BU-Q	2B	7~13.2	16000	25.9	39.0	750	9.00	65000	1	51.5	
XYW04028024BL-Q	2B	24	12~26.4	5000	10.3	7.9	80	1.92	80000	7	24.5
XYW04028024BM-Q	2B		12~26.4	7000	13.0	12.0	90	2.04	80000	6	34.5
XYW04028024BH-Q	2B		12~26.4	8000	14.4	14.6	160	3.84	75000	5	37.5
XYW04028024BS-Q	2B		12~26.4	9500	16.5	18.9	200	4.80	65000	4	41.0
XYW04028024BSE-Q	2B		12~26.4	11000	19.0	26.2	280	6.72	65000	3	47.0
XYW04028024BSS-Q	2B		12~26.4	13000	21.4	31.9	430	10.32	65000	2	49.5

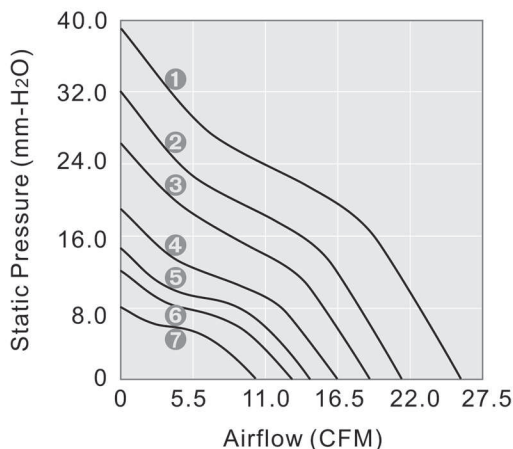
2B: 2-ball bearing D: 1-ball 1-sleeve bearing L: sintetico bearing S: sleeve bearing

**Voltage Available**  
05 12 24 48

**Bearing System Available**  
2B L S

**Function Available**  
- 1 6 5 4 3 2 7 8 9 10 11 14 12 13

### PERFORMANCE P-Q CURVE



### OUTLINE DIMENSIONS

