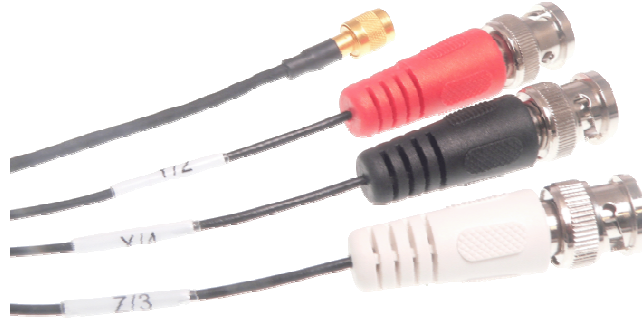
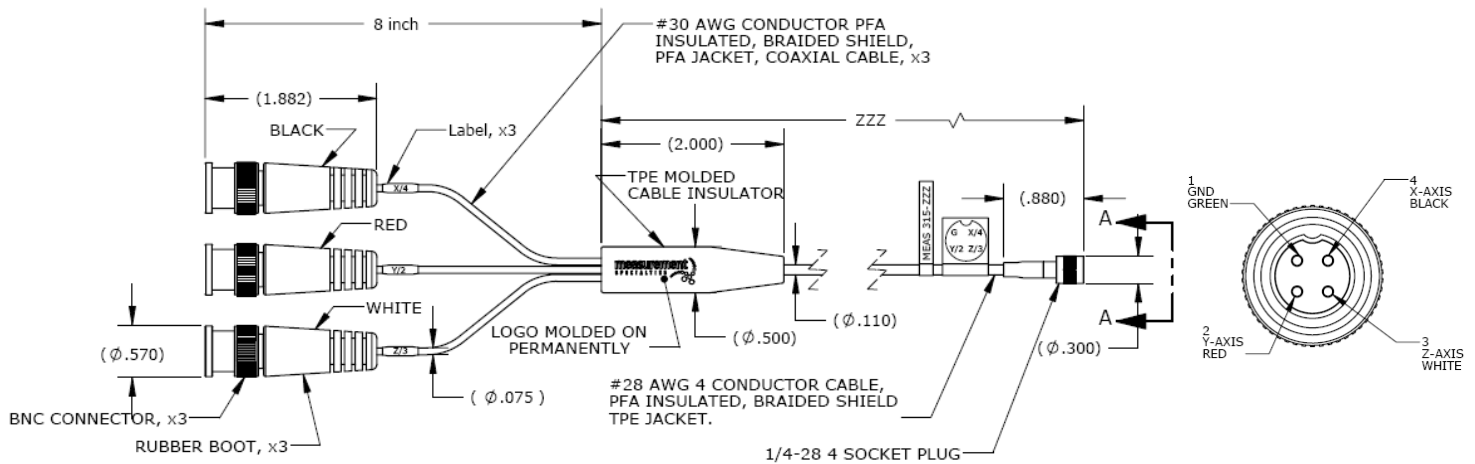


315 Cable Assembly



DIMENSIONS



DESCRIPTION

IEPE plug and play accelerometer cable assembly for triaxial accelerometers. Featuring 4-pin Microtech connector and three BNC connectors. Standard cable length is 120 inches. Mates with accelerometer models 7131A & 7132A.

FEATURES

- TPE Jacket
- PFA Insulated #28 AWG Conductors
- SPC Braided Shield
- 4-Pin Microtech Connector and 3x BNC Connector
- 54°C to +125°C Temp Range

APPLICATIONS

- IEPE Triaxial Accelerometers
- Laboratory Testing
- Vibration Monitoring
- General Purpose
- Model Testing

315 Cable Assembly

ORDERING CODE

315-ZZZ (-ZZZ designates length in inches, -120 standard)

NORTH AMERICA

Measurement Specialties, Inc.
1000 Lucas Way
Hampton, VA 23666
USA
Sales and Customer Service
Tel: +1-800-745-8008 or
+1-757-766-1500
Fax: +1-757-766-4297
t&m@meas-spec.com

EUROPE

**Measurement Specialties
(Europe) Ltd.**
26 Rue des Dames
F78340 Les Clayes-sous-Bois
France
Sales and Customer Service
Tel: +33 (0) 1 79 33 00
Fax: +33(0)1 34 81 03 59
t&m@meas-spec.com

ASIA

**Measurement Specialties
(China), Ltd.**
No. 26 Langshan Road
Shenzhen High-Tech Park (North)
Nanshan District
Shenzhen, China 518057
Sales and Customer Service
Tel: +86 755 3330 5088
Fax: +86 755 3330 5099
t&m@meas-spec.com

The information in this sheet has been carefully reviewed and is believed to be accurate; however, no responsibility is assumed for inaccuracies. Furthermore, this information does not convey to the purchaser of such devices any license under the patent rights to the manufacturer. Measurement Specialties, Inc. reserves the right to make changes without further notice to any product herein. Measurement Specialties, Inc. makes no warranty, representation or guarantee regarding the suitability of its product for any particular purpose, nor does Measurement Specialties, Inc. assume any liability arising out of the application or use of any product or circuit and specifically disclaims any and all liability, including without limitation consequential or incidental damages. Typical parameters can and do vary in different applications. All operating parameters must be validated for each customer application by customer's technical experts. Measurement Specialties, Inc. does not convey any license under its patent rights nor the rights of others.