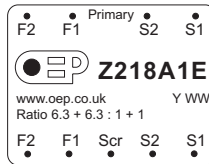
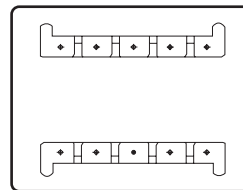
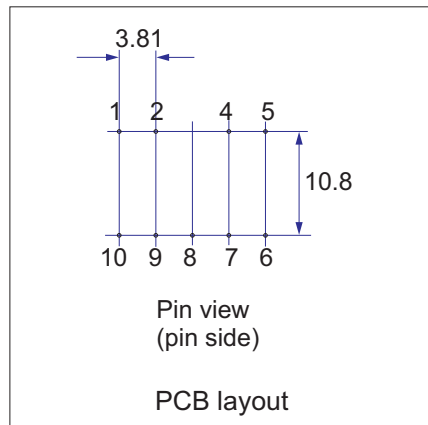
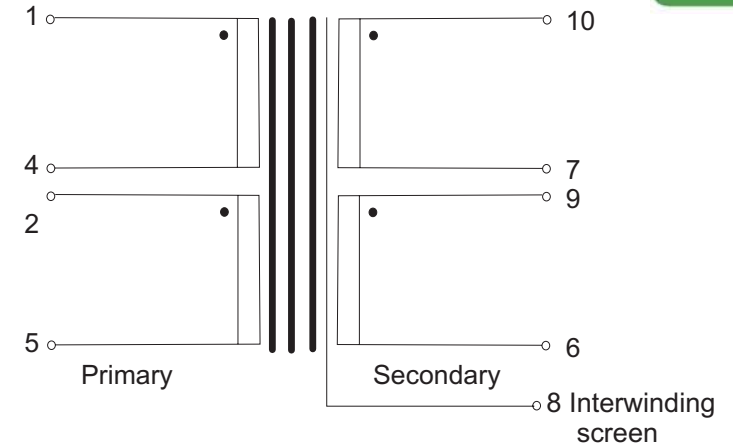
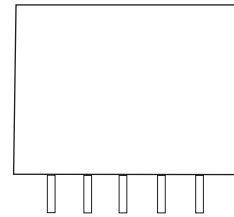
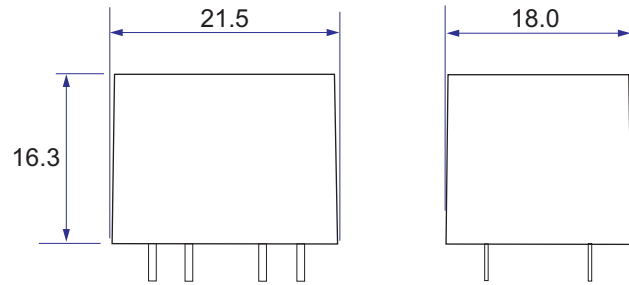


**Application:**

General purpose input transformer up to 0dBu



Label  
Y WW = date code



Turns ratio	6.3+6.3 to 1+1		
Weight	20g		
	Min.	Typ.	Max.
Primary DC resistance (per winding)	-15%	46Ω	+15%
Secondary DC resistance (per winding)	-15%	1.9Ω	+15%
Optimal source impedance (series)		600Ω	
LF -3dB point			10Hz
HF -3dB point *	30kHz	35kHz	
30Hz max level (3% THD)		+0dBm	+3dBm
THD (0dBm, 1kHz)		0.005%	0.01%
THD (0dBm, @ 20Hz)		2.5%	
Interwinding capacitance @ 10kHz		33pF	
Leakage inductance (1-5) @ 10kHz		5.2mH	
Operating / storage temperature range	-20°C		+85°C

Tolerance on all dimensions +/-0.2mm unless stated otherwise  
Pin diameter = 0.71mm

\* With 600Ω source resistance, screen (pin 8) grounded.  
Unused pins should be left floating with minimal pad size for best performance.



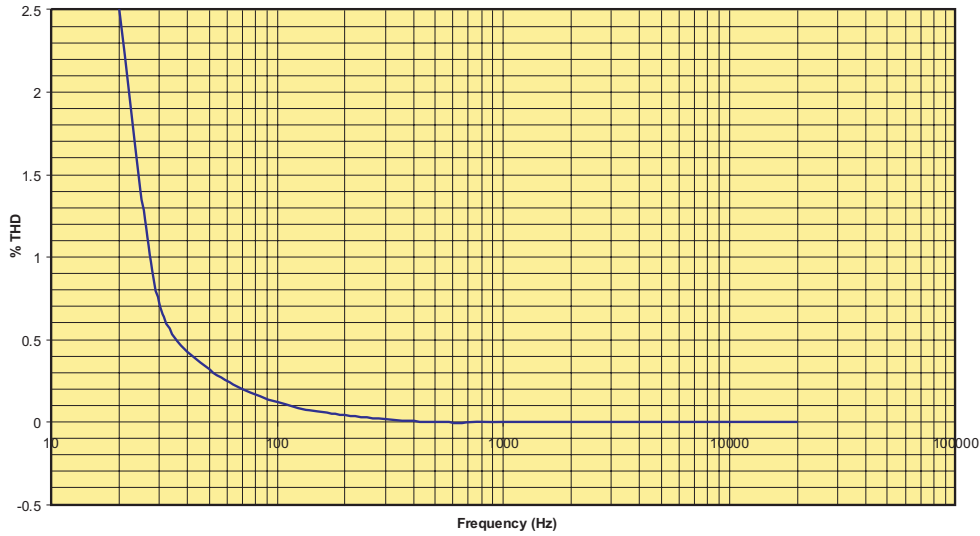
**Walters Group Holdings Ltd.**  
Unit 5, Oxonian Park, Langford Locks,  
Kidlington, Oxfordshire. OX5 1FP  
Tel: (01865) 855085 Fax: (01865) 855075  
Website: www.oep.co.uk

DESCRIPTION	ISSUE	DATE	DRAWN	CHECKED	DRAWING NUMBER
PCB mounting line input transformer Impedance: 150Ω/600Ω to 3.75Ω/15Ω page 1 of 2	1	30/09/09	CS		<b>Z218A1E</b>
	2	13/05/10	CS		
	3	01/07/10	CS		
	4	01/11/10	CS		

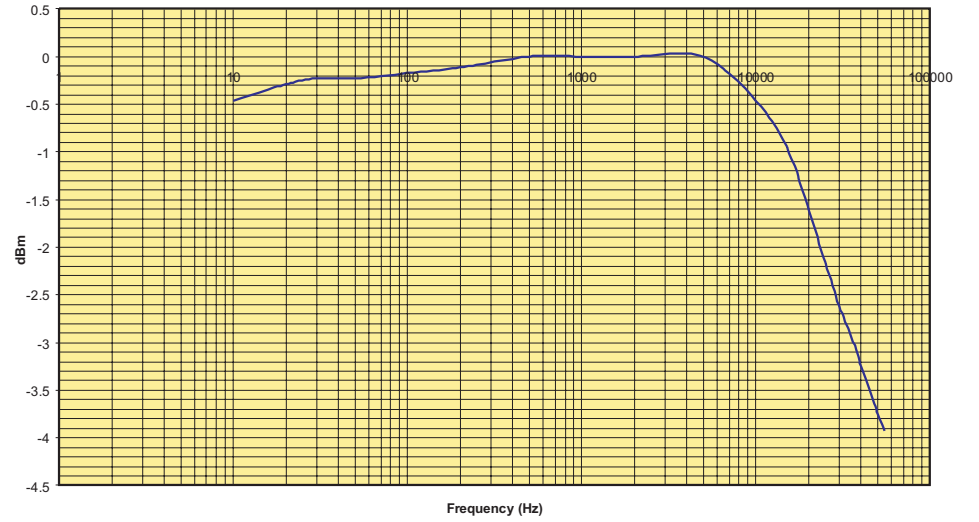
Scale: nts

All dimensions in mm unless stated otherwise

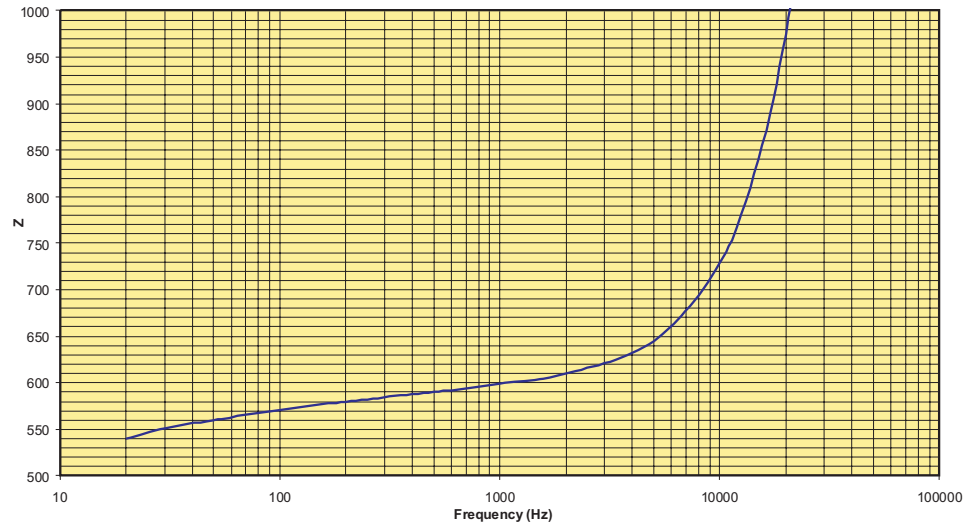
Distortion 20Hz - 20kHz, source: 0dBm, load: 8.7 ohms, windings in series



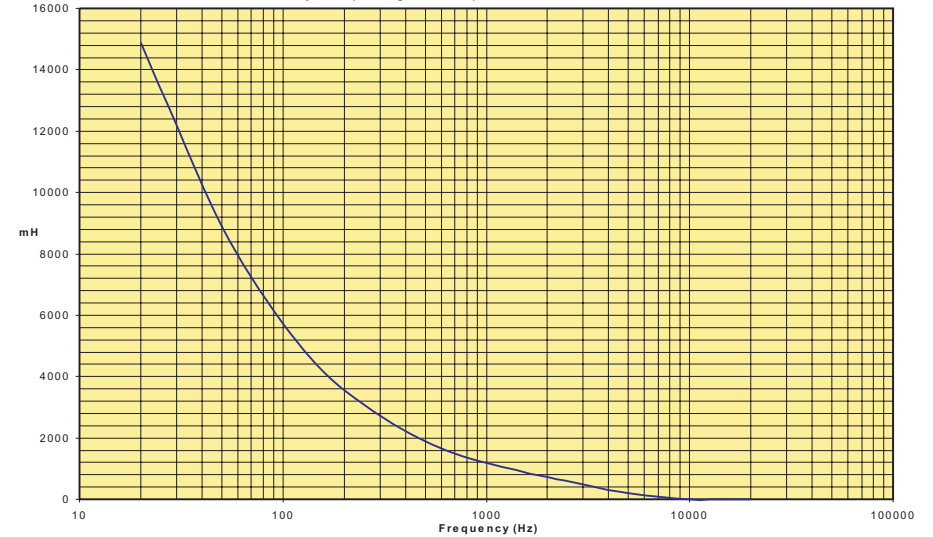
Frequency response: source: 0dBm, load: 8.7 ohms, windings in series



Impedance 20Hz - 30kHz (8.7 ohm load on secondary, windings in series)



Primary OCL (windings in series) 20Hz - 20kHz: at 0dBu



**Walters Group | Holdings Ltd.**  
 Unit 5, Oxonian Park, Langford Locks,  
 Kidlington, Oxfordshire. OX5 1FP  
 Tel: (01865) 855085 Fax: (01865) 855075  
 Website: www.oep.co.uk

DESCRIPTION	ISSUE	DATE	DRAWN	CHECKED	DRAWING NUMBER
PCB mounting line input transformer Impedance: 150Ω/600Ω to 3.75Ω/15Ω page 2 of 2 Scale: nts All dimensions in mm unless stated otherwise	1	30/09/09	CS		<b>Z218A1E</b>
	2	13/05/10	CS		
	3	01/07/10	CS		
	4	01/11/10	CS		