



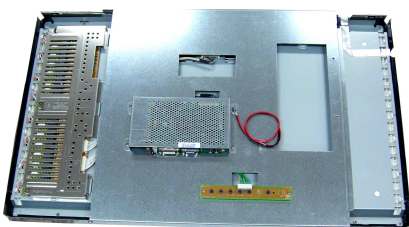
GEOA420LG-FD01 42" LCD Mount monitors

BENEFITS :

- Designed to give state-of-the-art picture quality
- Analog RGB / DVI (Digital Video Interface)
- Full CRT multi-sync monitor compatibility
- Single control operated & transparent On-Screen-Display (hereafter 'OSD') user interface
- RS232 communication; remote control OSD function power on/off

SPECIFICATIONS

Model	GEOA420LG-FD01	
Case	Steel	
Display Type	Size: 42.0" diagonal Type: Active matrix TFT LCD Aspect ratio: 16 x 9	
Useful screen area	Horizontal: 930 mm Vertical: 523 mm	
Monitor dimensions	Width: 613 mm Height: 575 mm Depth: 80 mm	
Optimal (native) resolution	1366 x 768	
Other supported resolutions	640 x 480 60~75Hz 800 x 600 60~75Hz 1024 x 768 60~75Hz 1152 x 864 60~75Hz 1280 x 1024 60~75Hz 1280 x 768 60~75Hz 1366 x 768 60~75Hz 1440 x 900 60~75Hz 1600 x1200 60Hz 1680 x1050 60~75Hz 1920 x1080 60Hz	
Colors	16.7 million with dithering (8 bit)	
Brightness LCD panel	500 cd/m2 (typical)	
Response time	18 msec (typical)	
Viewing angle (typical, from center)	Horizontal (left/right): ±89° or 178° total Vertical (up/down): ±89° or 178° total	
Contrast ratio	CR 800:1 (typical), CR with DCR 1600:1(typical)	
Input video format	Analog RGB & DVI	
Input video signal connector	Mini D-Sub 15-Pin, DVI 24-Pin	
Input frequency	Horizontal: 31.5–80 kHz Vertical: 60–75 Hz	
Power supply	Type: External brick, 100–240 VAC, 50–60 Hz Monitor input voltage: 24V DC	
Temperature	Operating: 0°C to 40°C Storage: -20°C to 60°C	
Humidity	Operating: 20%–80% Storage: 10%–90% noncondensing	
Weight (approx.)	Actual: 25 kg Shipping: 30 kg Shipping box dimensions: 1165(L) X 275(W) X 775(H)	
Touch interface	Option	
Mounting options	Option	



8

7

6

5

4

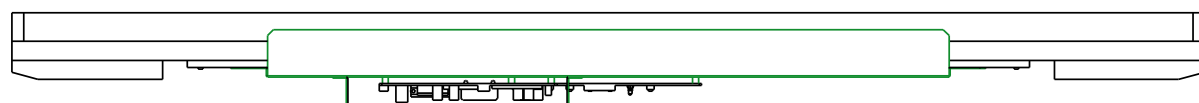
3

DWG NO GEOA420LG-FD01

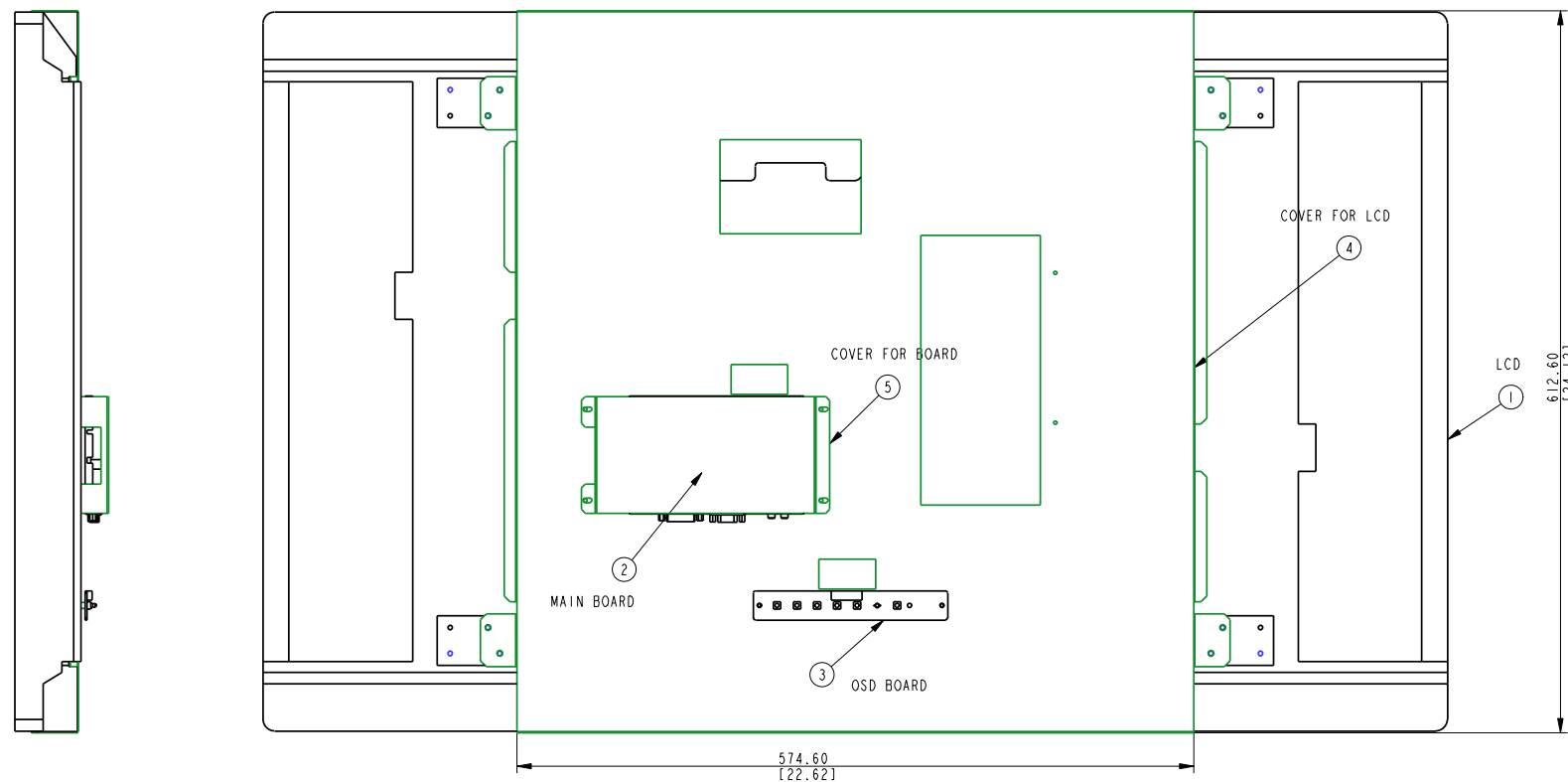
REVISIONS

REV	ECO	DESCRIPTION	BY/DATE	CHECKED/DATE
EA		INITIAL RELEASE	C. SUNGIN 24 OCT 06	
		PENDING ECO NO. AVPWS_SPM		

D



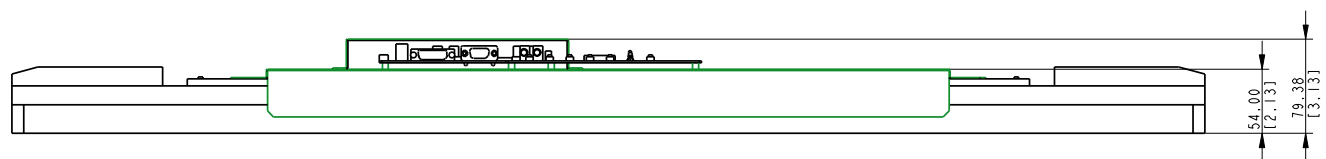
C



B

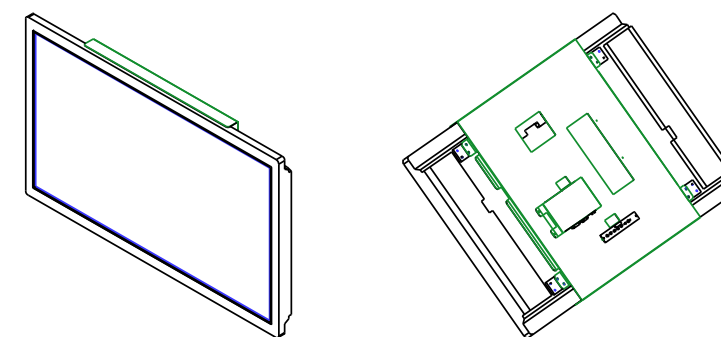


A



NOTES:

- IDENTIFY WITH PARENT PART NUMBER, LATEST REVISION LETTER, VENDOR LOGO WITH 4-DIGIT DATE CODE (MMYY) .12 [3.0] TO .19 [4.8] HIGH IN AREA SHOWN. MARKING SHALL BE LEGIBLE AFTER SPECIFIED FINISH.
- THIS DRAWING MAY BE USED FOR MULTIPLE ASSEMBLIES. FOR REFERENCE DOCUMENTATION, SEE PARENT BILL OF MATERIAL.
- ASSEMBLY MUST BE PACKAGED TO ENSURE NO BREAKAGE OR SURFACE IMPERFECTIONS OCCUR DURING SHIPPING.
- INDICATED ITEMS NOT SHOWN.



SCALE 1/10

QUANTITY PER ASSEMBLY	00	ITEM	PART NO	DESCRIPTION	SHT
PARTS LIST					
<small>ALL DESIGN, OPERATIVE AND PROCESS DATA PERTAINING TO THE ARTICLE SHOWN ON THIS SHEET IS THE PROPERTY OF ESTECOM. DISCLOSED IN CONFIDENCE AND IS NOT TO BE COPIED, REPRODUCED, REVEALED TO OR APPROPRIATED BY OTHERS, IN PART OR IN WHOLE, WITHOUT THE EXPRESS CONSENT OF ESTECOM. THIS PRINT IS LOANED AND RECIPIENT COVENANTS IT WILL NOT BE USED IN ANY MANNER DETRIMENTAL TO THE INTEREST OF ESTECOM AND MUST BE RETURNED ON DEMAND.</small>				ESTECOM	
<small>DO NOT SCALE DRAWING</small> <small>DIMENSIONS ARE IN MILLIMETERS UNLESS OTHERWISE SPECIFIED</small> <small>UNLESS OTHERWISE SPECIFIED</small>				TITLE 42" OPEN FRAME	
<small>FINISH</small> <small>UNLESS OTHERWISE SPECIFIED</small>				<small>DWG. NO.</small> GEOA420LG-FD01	
<small>TOLERANCES</small> <small>ON DECIMAL DIMENSIONS</small> <small>INCHES</small> <small>MILLIMETERS</small> <small>UNDER .150</small> <small>UNDER .005</small> <small>UNDER 3.91</small> <small>UNDER .13</small> <small>.150 - .250</small> <small>.005</small> <small>3.91 - 6.35</small> <small>.13</small> <small>.251 - .500</small> <small>.005</small> <small>6.36 - 12.70</small> <small>.13</small> <small>OVER .500</small> <small>.010</small> <small>OVER 12.70</small> <small>.25</small>				<small>REV</small> EA	
<small>DRAWN</small> C. SUNGIN				<small>DATE</small> 24 OCT 06	
<small>CHECKED</small>				<small>DATE</small>	
<small>APPROVED</small>				<small>SCALE</small> 1/3 & NOTED	
<small>SHT</small> 1 OF				<small>1</small>	