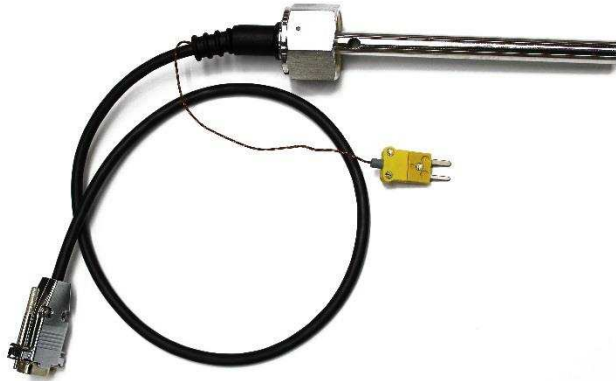


SL-900 Series



- Multi point discrete level switch
- Ideal solution for the detection and measurement of ultra pure chemical fluids
- Provides single/ multiple discrete point levels with a very high degree of precision

DESCRIPTION

The Model SL-900 Series Ultrasonic Micromer measurement System is an ideal solution for the detection and measurement of ultra-pure chemical fluids in the semiconductor industries. Measuring a fluid level accurately and reliably in the chemical vapor deposition process is of the utmost importance to the semiconductor wafer fabrication process. The Measurement Specialties SL-900 Series provides single/ multiple discrete point levels with a very high degree of precision. The SL-900 Series ultrasonic system is well suited for high viscosity liquids such as DMAH, titanium precursors and copper precursors.

FEATURES

- 316 L stainless steel machined sensor body
- Sensor material has an electropolished finish ($R_a = 15 \mu\text{m}$ – minimum)
- Miniature sensor size reduces liquid volume displacement
- Works with the following chemicals independent of dielectric, viscosity, color, density and opacity of chemical fluids: DMAH, TAETO, CVD, TDEAT, CUTMUS, TEOS, DCE, TCA
- High pressure vessel application up to 250 PSIG (1724 kPa) (consult factory for higher pressure applications)
- Accuracy of each discrete point level is $\pm 2 \text{ mm}$
- Repeatability of $\pm 1 \text{ mm}$ is typical
- Single point low level as close as $\frac{1}{4}$ " (6 mm) from bottom of vessel (with $\frac{5}{8}$ " tube only; low level of $\frac{5}{16}$ " for other tube diameters)

APPLICATIONS

- Semiconductor industries
- Pharmaceutical industries
- High pressure vessels

PERFORMANCE SPECIFICATIONS

Parameter	Typical Value
Accuracy	±2 mm
Repeatability	±1 mm typical
Input Power	24 VDC, 115 VAC/230 VAC, 50/60 Hz (optional)
Output	Relay – 0.5 A, dry contacts, (NO)
Sink	50 mA max

Parameter	Typical Value
Housing	NEMA 1
Mounting	3/4" VCR®, 1/2" VCR® standard
Sensor Material	316 L stainless steel (standard)
Operating Pressure	Up to 250 PSIG (1724 kPa)
Temperature	Sensor: -20 to 200 °F (-29 to 93 °C) Electronics: -20 to 170 °F (-29 to 77 °C)

MECHANICAL DIMENSIONS in inches [mm]

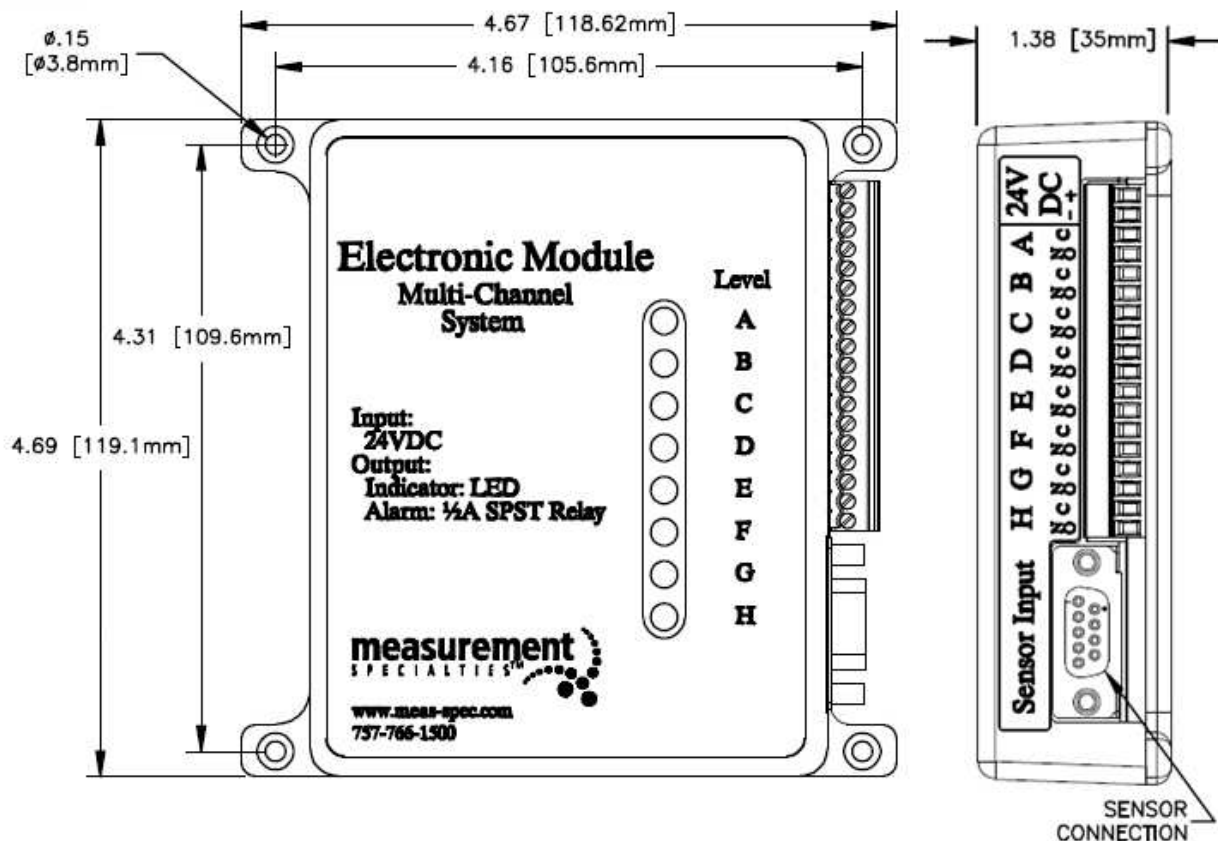


Figure 1: 8 Point Electronics

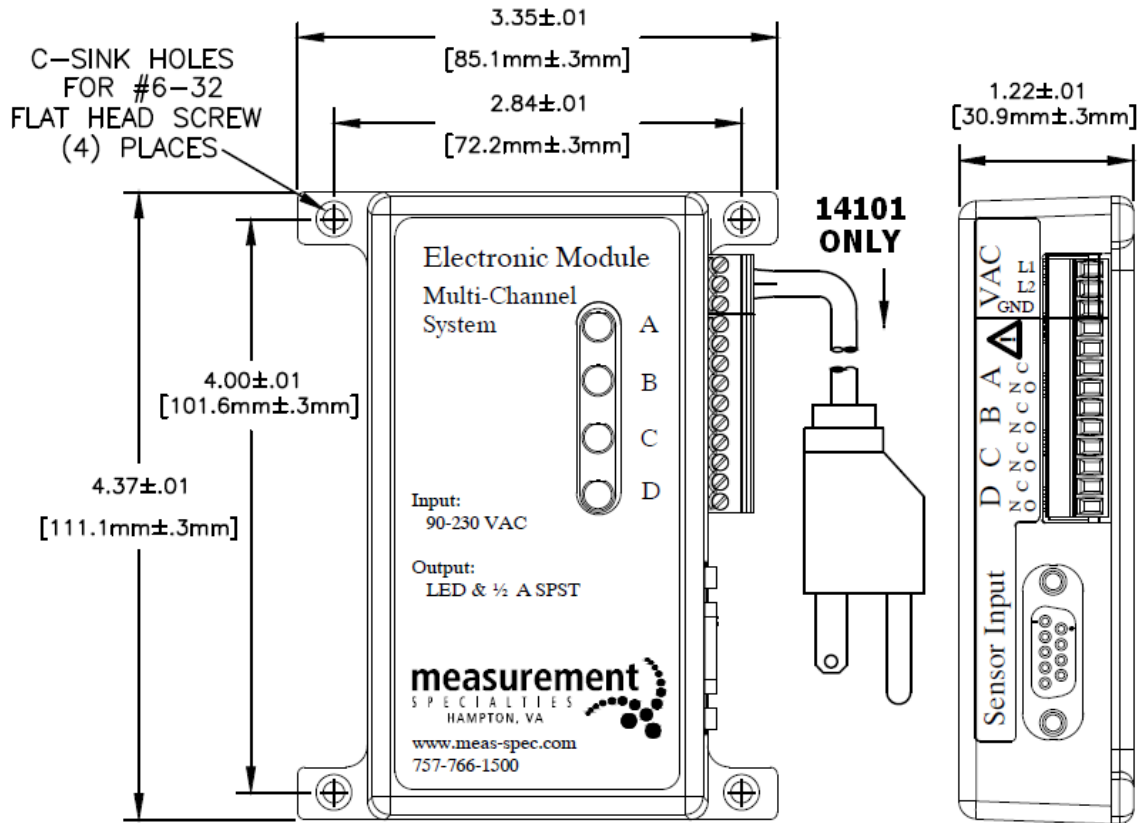


Figure 2: 4 Point Electronics (Note – 115 VAC version shown)

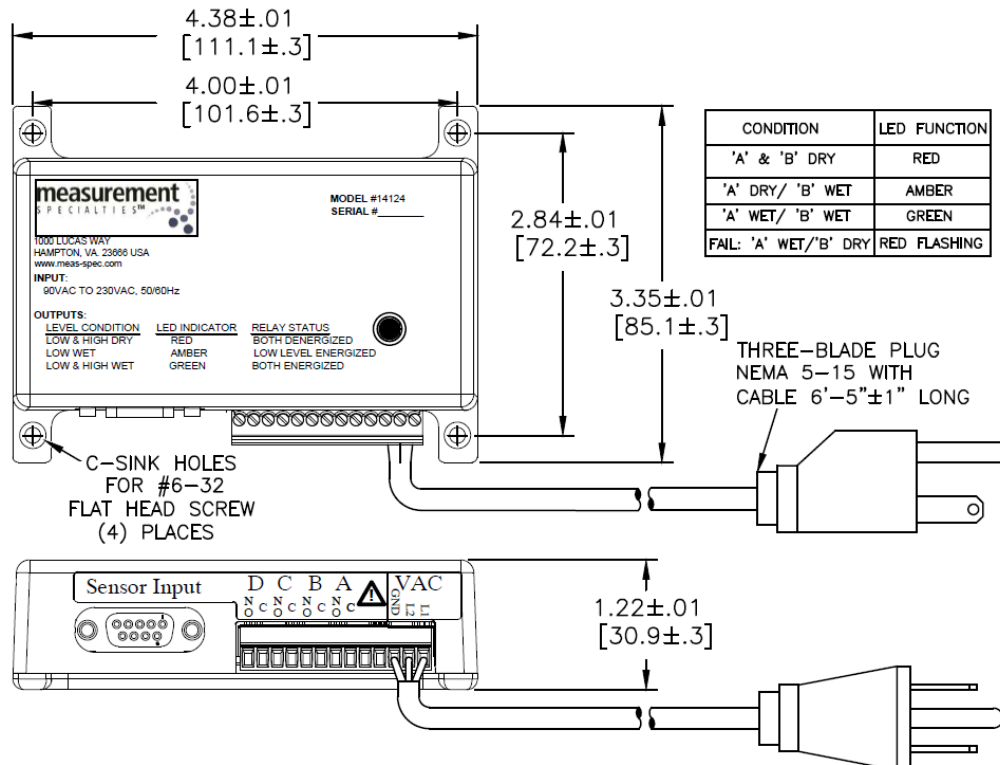


Figure 3: 2 Point Electronics (Note – only available in 115 VAC version)

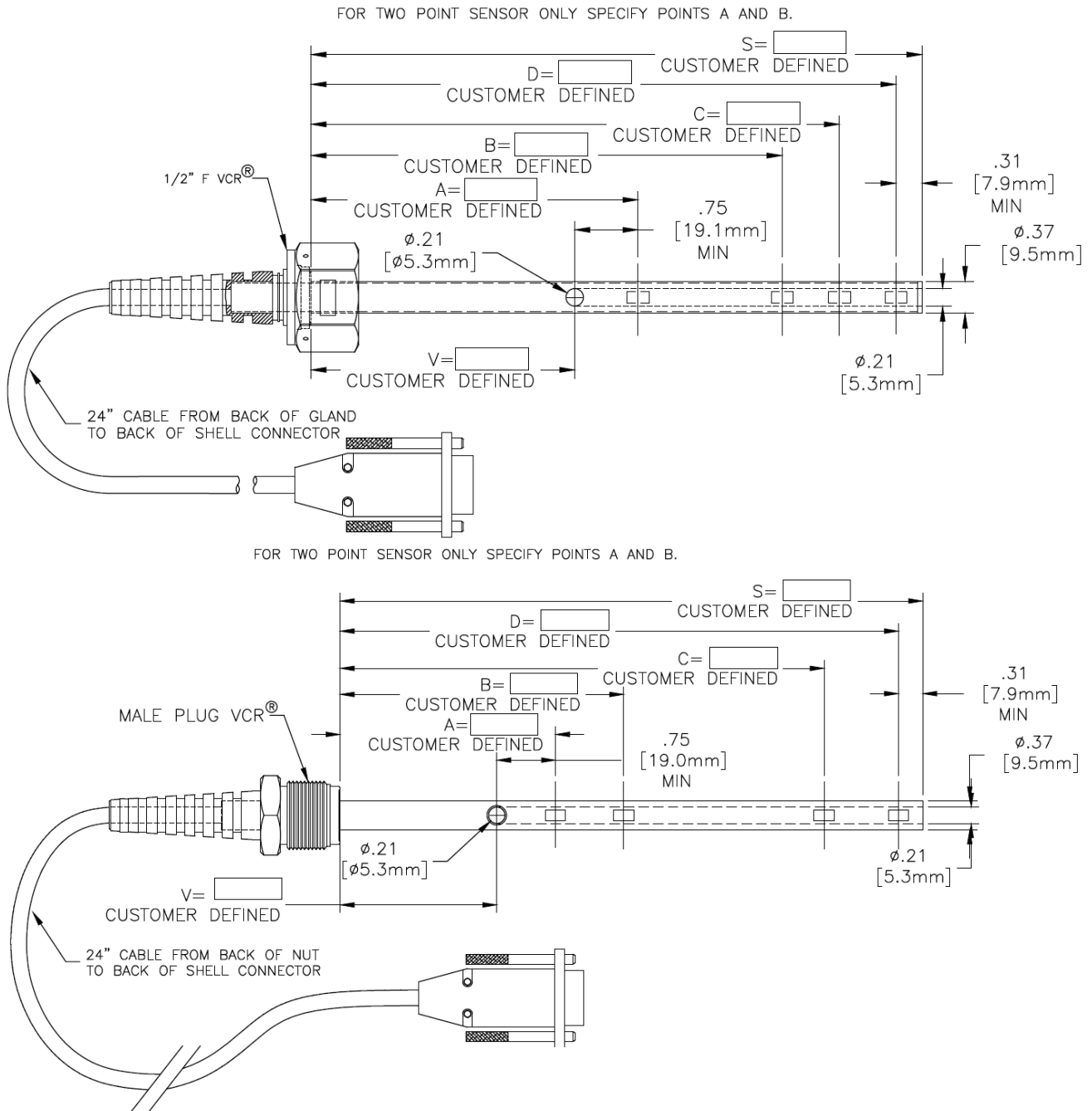


Figure 4: SL-900 series with $\frac{3}{8}$ " OD tube. The top drawing shows a $\frac{1}{2}$ " female VCR® fitting while the bottom drawing shows a $\frac{1}{2}$ " male VCR® fitting.

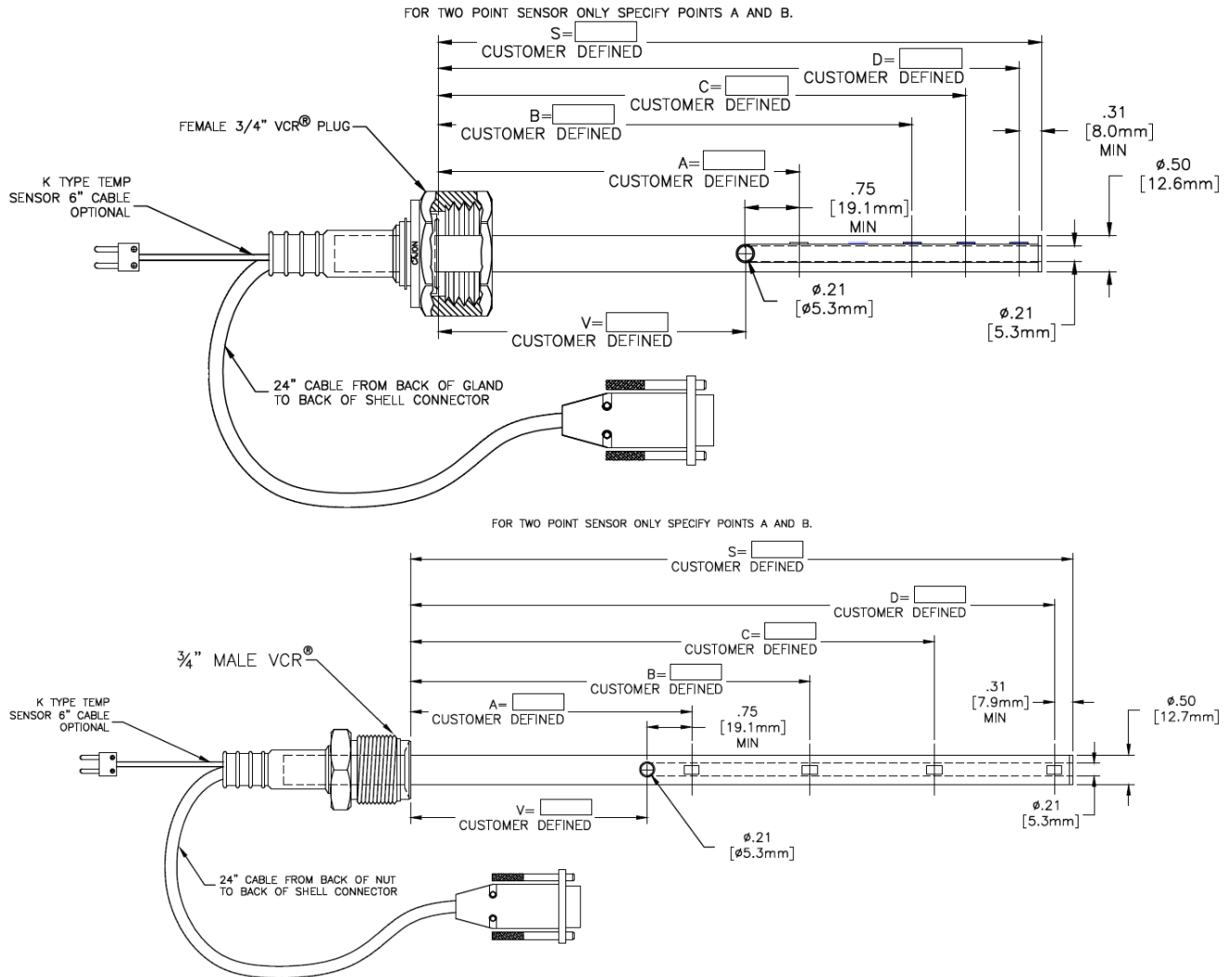


Figure 5: SL-900 series with 1/2" OD tube. The top drawing shows a 3/4" female VCR® fitting while the bottom drawing shows a 3/4" male VCR® fitting.

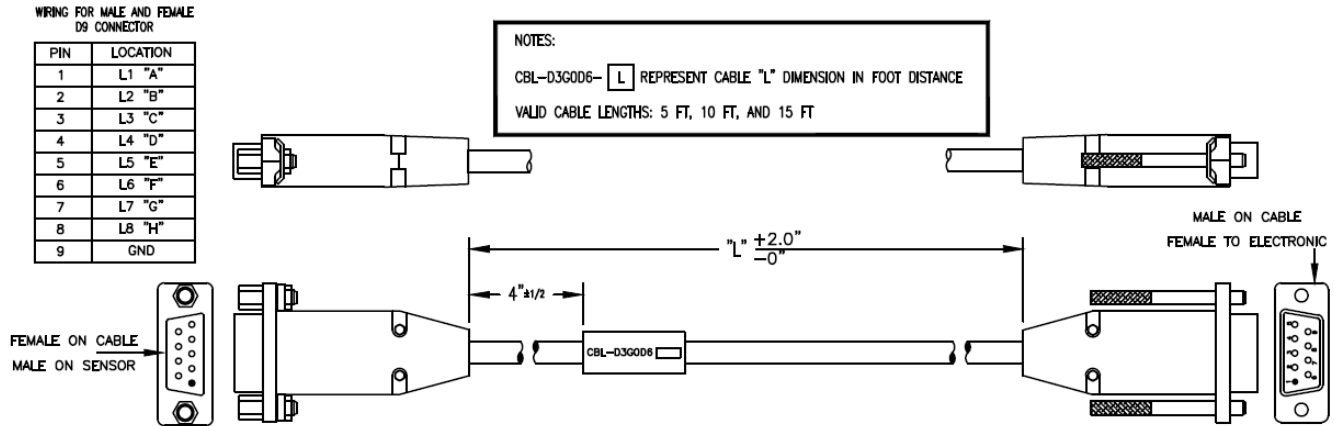


Figure 6: 8 Point extension cable

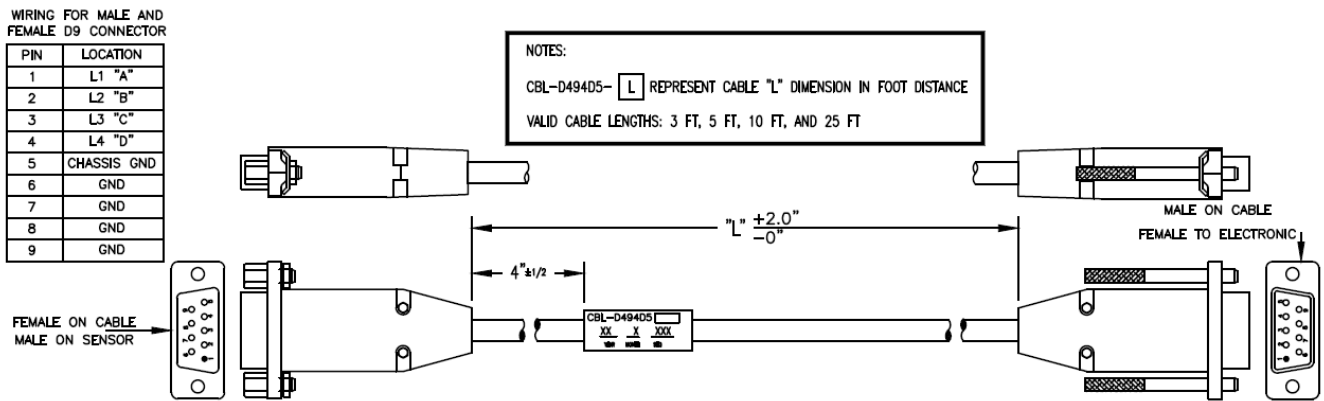


Figure 7: 2 or 4 Point extension cable

OPERATION

The sensor is mounted on the top of the vessel through VCR® metal gasket face seal fitting for single/multiple discrete point level, which is mounted in the liquid medium. The electronics generate a continuous wave ultrasonic signal that completely illuminates the liquid sensing area. The absence of liquid in the sensing area causes the ultrasonic signal to dissipate, which the electronics sense as a “dry” condition. When liquid is present, the amplitude of the ultrasonic signal increases which the electronics sense as a “wet” condition.

ORDERING INFORMATION

A. SL-900 Electronics:

Points	Input Voltage	Outputs	Part Number
2	90-230 VAC	A Single, Tri-Color LED & ½ A N.O. Contact	14124
4	90-230 VAC	Four, Dual-Color LEDs & 4, ½ A N.O. Contacts	14101
4	24 VDC	Four, Dual-Color LEDs & 4, ½ A N.O. Contacts	14102
4	24 VDC	Four, Dual-Color LEDs & 4, ½ A N.C. Contacts (Cable Fault)	14112
8	24 VDC	Eight, Dual-Color LEDs & 8, ½ A N.O. Contacts	14002

All electronics are programmed with the latest revision of software for that model. All electronics are laser engraved on back with part number and serial number.

B. SL-900 Extension Cables:

Length	Number of Points	Part Number
3 feet	2,4	CBL-D494D5-03
5 feet	2,4	CBL-D494D5-05
10 feet	2,4	CBL-D494D5-10
25 feet	2,4	CBL-D494D5-25
5 feet	8	CBL-D3G0D6-05
10 feet	8	CBL-D3G0D6-10
15 feet	8	CBL-D3G0D6-15

All cables have thumbscrews on male connector (for electronics) and standoffs on female connector (for sensor). All cables will be labeled with part number and not serialized.

ORDERING INFORMATION

C. SL-900 Sensor Options:

# Of Points	Connection	Outer Tube
2,4	1/2" male VCR® (plug)	3/8" OD
2,4	1/2" female VCR® (nut)	3/8" OD
2,4	3/4" male VCR® (plug)	3/8" OD
2,4	3/4" female VCR® (nut)	3/8" OD
2,4	3/4" male VCR® (plug)	1/2" OD
2,4	3/4" female VCR® (nut)	1/2" OD
8	3/4" male VCR® (plug)	5/8" OD
8	3/4" female VCR® (nut)	5/8" OD

Additional Sensor Options:

Standard sensor insertion length is 6-12 inches. Lengths of 12-24 inches are available at an additional charge. Please specify length in inches when placing an order.

Optional K-type thermocouple available for an additional charge (only with 1/2" or 5/8" OD tubes).

All sensors wired to standard 9-pin connector with standard hardware. Sensor cables are available in lengths of 6", 12", 18", and 24".

TECHNICAL CONTACT INFORMATION

North America

Measurement Specialties, Inc.
1000 Lucas Way
Hampton, VA 23666
Tel: 1-800-745-8008
Fax: 1-757-766-4297
Sales: piezo@meas-spec.com

Europe

MEAS Deutschland GmbH
Hauert 13
44227 Dortmund
Germany
Sales & Customer Service: +49 (0)231 9740 21
Technical Support: +44 (0)138 38700 01
Email: piezoeurope@meas-spec.com

Asia

Measurement Specialties (China) Ltd.
No. 26 Langshan Road,
High-Tech Park (North)
Nanshan District, Shenzhen 518057
Tel: +86 755 3330 5068
Email: sales.china@meas-spec.com

The information in this sheet has been carefully reviewed and is believed to be accurate; however, no responsibility is assumed for inaccuracies. Furthermore, this information does not convey to the purchaser of such devices any license under the patent rights to the manufacturer. Measurement Specialties, Inc. reserves the right to make changes without further notice to any product herein. Measurement Specialties, Inc. makes no warranty, representation or guarantee regarding the suitability of its product for any particular purpose, nor does Measurement Specialties, Inc. assume any liability arising out of the application or use of any product or circuit and specifically disclaims any and all liability, including without limitation consequential or incidental damages. Typical parameters can and do vary in different applications. All operating parameters must be validated for each customer application by customer's technical experts. Measurement Specialties, Inc. does not convey any license under its patent rights nor the rights of others.