

SMD2 (0805) NTC Thermistors



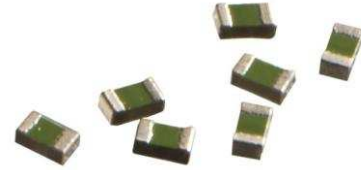
0.04K Ohms to 500K Ohms

Resistance @ +25°C

Tape and Reel packaging for automatic placement

Available in $\pm 1\%$, $\pm 3\%$, $\pm 5\%$ or $\pm 10\%$ tolerance @ +25°C

Cost effective



SMD2 SERIES THERMISTORS

Standard Surface Mount NTC Thermistor available in the 0805 package.

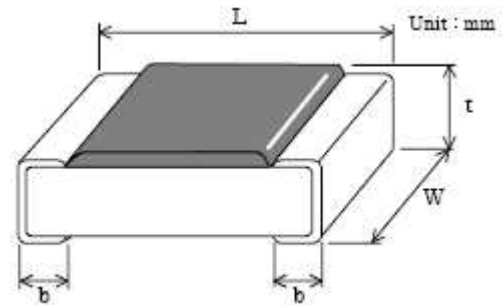
FEATURES

- 0.04 to 500K Ohms Resistance @ +25°C
- Tape and reel packaging for automatic placement
- Low cost
- Temperature range -40°C to +125°C
- RoHS Compliant

APPLICATIONS

- Temperature sensing, control and detection
- Temperature compensation of transistors, IC's and crystal oscillators in mobile
- Consumer electronics
- Automotive electronics
- LCD controls

Dimensions



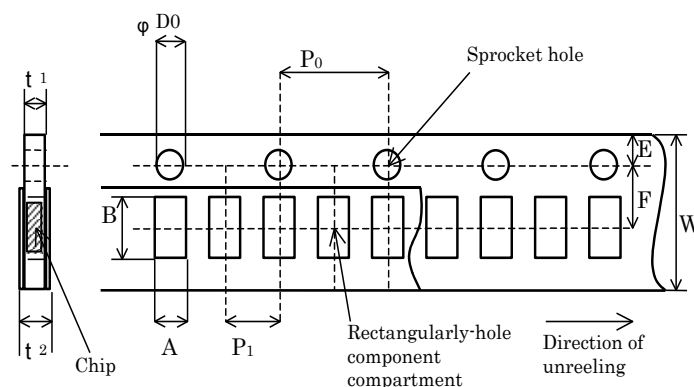
	L	W	t	b
SMD2	2.00±0.2	1.25±0.2	1.2 mm Max.	0.4 ±0.2

Product Definition

Part Number	Resistance [Ω] @ +25°C	Tolerance @ +25°C	Beta Value 25/85	Tolerance on Beta Value	Dissipation Constant in still air @ +25°C	Maximum Rated Wattage @ +25°C
SMD2.04KJ280JT	40	± 5%	2800	± 5%	2 mW/°C	300 mW
SMD2.5KJ320JT	500	± 5%	3200	± 5%	2 mW/°C	300 mW
SMD22KJ410JT	2000	± 5%	4100	± 5%	2 mW/°C	300 mW
SMD23KJ410JT	3000	± 5%	4100	± 5%	2 mW/°C	300 mW
SMD25KJ355JT	5000	± 5%	3550	± 5%	2 mW/°C	300 mW
SMD210KJ344JT	10000	± 5%	3435	± 5%	2 mW/°C	300 mW
SMD210KJ375JT	10000	± 5%	3750	± 5%	2 mW/°C	300 mW
SMD215KJ380JT	15000	± 5%	3800	± 5%	2 mW/°C	300 mW
SMD220KJ380JT	20000	± 5%	3800	± 5%	2 mW/°C	300 mW
SMD230KJ400JT	30000	± 5%	4000	± 5%	2 mW/°C	300 mW
SMD247KJ400JT	47000	± 5%	4000	± 5%	2 mW/°C	300 mW
SMD2100KJ415JT	100000	± 5%	4150	± 5%	2 mW/°C	300 mW
SMD2150KJ425JT	150000	± 5%	4250	± 5%	2 mW/°C	300 mW
SMD2200KJ425JT	200000	± 5%	4250	± 5%	2 mW/°C	300 mW

Tape Dimensions

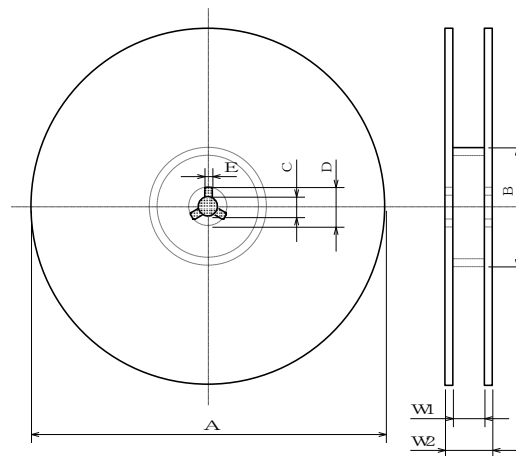
Type of taping	Carrier tape	Top cover tape	Bottom cover tape
Taping of rectangular punched carrier system	Paper	Thermal adhesion plastics	Thermal adhesion paper



	A	B	W	F	E	Unit mm
SMD2	1.45±0.10	2.25±0.20	8.00±0.30	3.50±0.05	1.75±0.10	
	P1	P2	P0	D0	t1	t2
SMD2	4.00±0.1	2.00±0.05	4.00±0.10	1.55±0.05	0.30max.	1.4max.

Remark: Pitch tolerance over any 10 pitches of P0 is ±0.2mm.

Reel Dimension

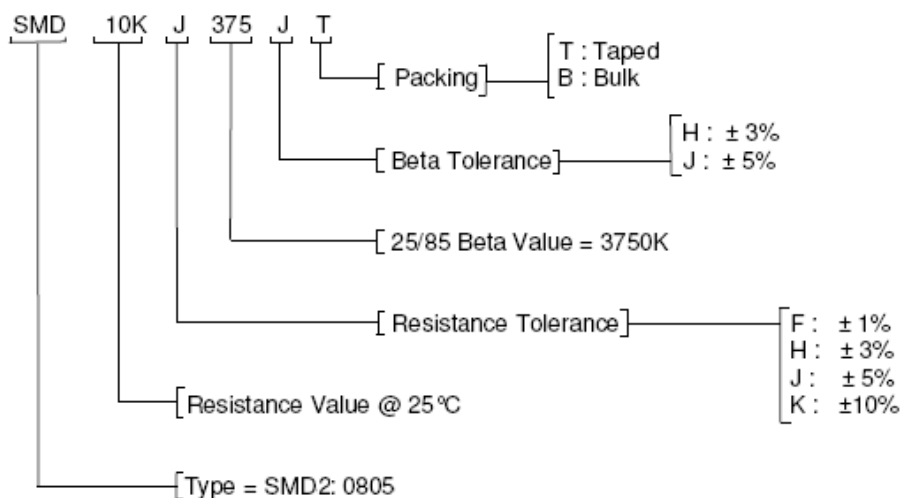


	A	B	C	D	E	Unit mm
SMD2	180±20	>50	13±0.50	21±0.8	2±0.5	
	W1	W2				
SMD2	10.00±1.50	6.00±0.5				

Ordering Information

Example:

Part Number	Description	Ω @ +25°C	MOQ
SMD210KJ375JT	0805 SMD Series 2 Thermistor – Taped & Reeled	10,000	3000



Note:

For Resistance Tolerance ±1% @ +25°C the Beta Tolerance = H (±3%)

For Resistance Tolerance ±3, 5 & 10% @ +25°C the Beta Tolerance = J (±5%)

NORTH AMERICA

Measurement Specialties, Inc.
910 Turnpike Road
Shrewsbury, MA 01545
Tel: 1-508-842-0516
Fax: 1-508-842-0342
Sales: temperature.cs.amer@meas-spec.com

EUROPE

Measurement Specialties, Inc
Ballybrit Business Park
Galway Ireland
Tel: +353-91-753238
Fax: +353-91-770789
Sales: temperature.cs.emea@meas-spec.com

ASIA

Measurement Specialties (China) Ltd.
No. 26, Langshan Road, Shenzhen High-tech Park (North)
Nanshan District, Shenzhen, China
518107
Sales: temperature.cs.asia@meas-spec.com

The information in this sheet has been carefully reviewed and is believed to be accurate; however, no responsibility is assumed for inaccuracies. Furthermore, this information does not convey to the purchaser of such devices any license under the patent rights to the manufacturer. Measurement Specialties, Inc. reserves the right to make changes without further notice to any product herein. Measurement Specialties, Inc. makes no warranty, representation or guarantee regarding the suitability of its product for any particular purpose, nor does Measurement Specialties, Inc. assume any liability arising out of the application or use of any product or circuit and specifically disclaims any and all liability, including without limitation consequential or incidental damages. Typical parameters can and do vary in different applications. All operating parameters must be validated for each customer application by customer's technical experts. Measurement Specialties, Inc. does not convey any license under its patent rights nor the rights of others.