

L05013 LEDlight 1-20VA 700mA

Description

The L05013 LEDlight is a current source supplying one output channel. Adjustments are easily made with a build-in single potentiometer. The output channel can drive 700mA max.

Input / Output

System Input Voltage Nominal	115-240Vac	
System Input Voltage Range	115-240Vac	
System Input Frequency	50/60Hz	
System Input Power	24W	
Output current channel one	700mA	stabilized current source.
Operating Voltage Output	33Vdc Max.	
Driver Efficiency	85%	
Power Factor	0.9C	
Nominal Line current	115V: 230mA 240V: 110mA	
Output Voltage ripple		
Output power	240V: 20 Watt 115V: 15 Watt	

Approvals

	CE
Immunity	EN 61547
EMI/RFI	EN 55015 (Conducted disturbance) EN 61000-3-2 (Harmonics & crest limits)
Performance	EN 62384
Safety	EN 61347-2-13

Load

LED type	Current (U _{nom} 230-240Vac)
Number of LEDs at channel 1	1-9 U _f 3.2V Max.
Dimmer type	No dimming
Load Operating Frequency	
Open Circuit Voltage	33Vdc
Short circuit protection	Yes
Open circuit protection	Yes
Overvoltage protection	Yes
Load voltage setting time (>90%)	1 sec.
Number of LEDs	
Input voltage = 230V	8 LEDs @ 700mA U _f 3.2V Max.
Input voltage = 230V	
Input voltage = 230V	

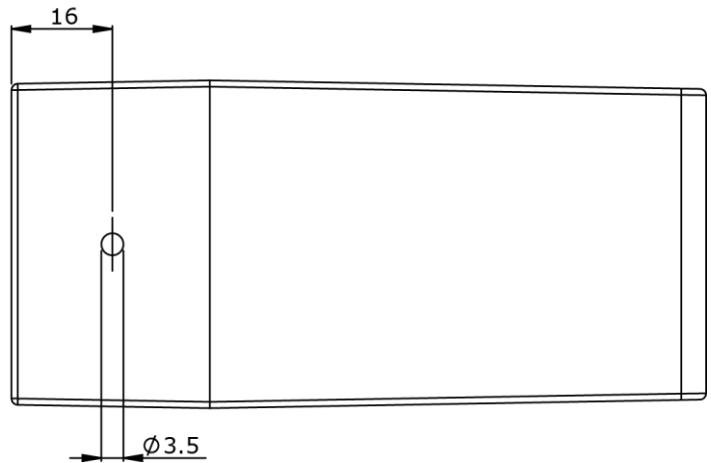
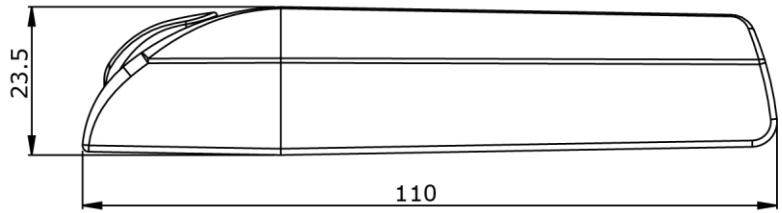
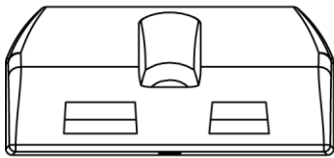
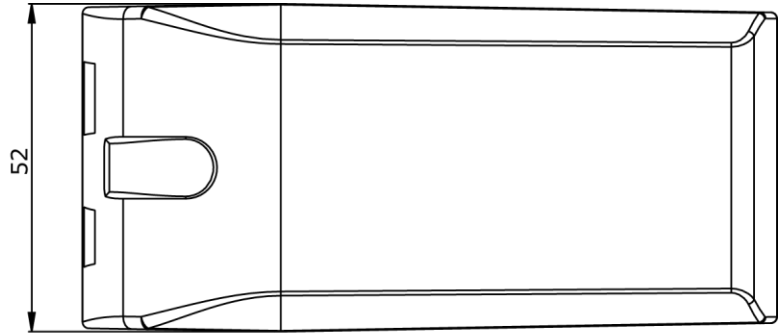
Packaging

Potting	No
Leads Pri.	H05RN-F 1 mm ²
Leads Sec.	0.2 mm ² – 1.5 mm ²
Lead Connection Method	Clamp or Lumoluce connector
Mounting Method	Screw



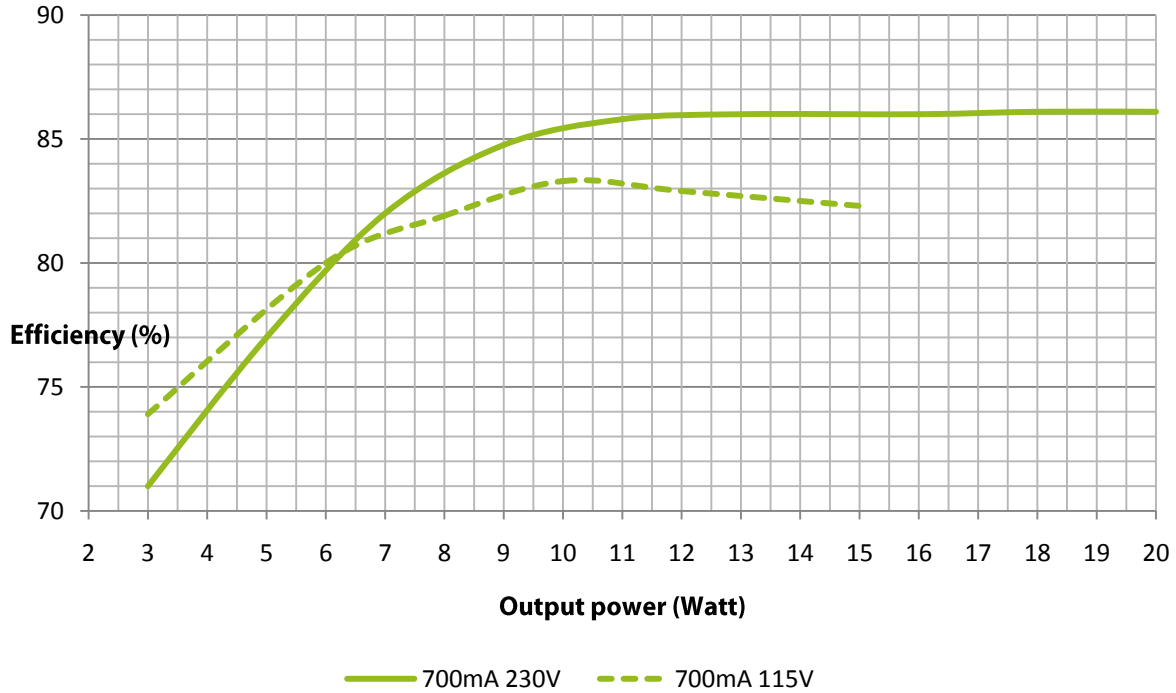
Thermal protection	Yes, against overheating
Output current overshoot	No
Output Isolation	Yes SELV EQ
Ambient Temperature range (Ta)	0 +45°C
Max. Case temperature (Tc)	<85° C
Storage Temperature range	-20 +50° C
Failure Rate	Nihil
RoHS compliant	Yes
Number of LEDs	
Input voltage = 115V	5 LEDs @ 700mA U _f 3.2V Max.
Input voltage = 115V	
Input voltage = 115V	
Weight	100 gram
Case colour	grey, blue
Maximum case height	23.5 mm
Maximum case width	52 mm
Maximum case length	111 mm

Technical drawings



Technical specifications

Efficiency



Power factor

