

L05012 LEDlight 1-20VA 350mA-1400mA

**Description**

The L05012 LEDlight is a stabilized and adjustable current source supplying one output channel. Adjustments are easily made with a build-in single potentiometer. The output channel can drive from 350mA up to 1400mA max.

**Input / Output**

System Input Voltage Nominal	115-240Vac	
System Input Voltage Range	115-240Vac	
System Input Frequency	50/60 Hz	
System Input Power	24W	
Output current channel one	350-1400mA	stabilized adjustable current source.
Operating Voltage Output	33Vdc Max.	
Driver Efficiency	85%	
Power Factor	0.9C	
Nominal Line current	115V: 230mA 240V: 110mA	
Output Voltage ripple		
Output power	240V: 20 Watt 115V: 15 Watt	



**Approvals**

	CE
Immunity	EN 61547
EMI/RFI	EN 55015 (Conducted disturbance) EN 61000-3-2 (Harmonics & crest limits)
Performance	EN 62384
Safety	EN 61347-2-13

**Load**

LED type	Current (U <sub>nom</sub> 230-240Vac)
Number of LEDs at channel 1	1-9 U <sub>f</sub> 3.2V Max.
Dimmer type	No dimming
Load Operating Frequency	
Open Circuit Voltage	33Vdc
Short circuit protection	Yes
Open circuit protection	Yes
Overvoltage protection	Yes
Load voltage Setting Time (>90%)	1 sec.
Number of LEDs	
Input voltage = 230V	9 LEDs @ 660mA U <sub>f</sub> 3.2V Max.
Input voltage = 230V	6 LEDs @ 1000mA U <sub>f</sub> 3.2V Max.
Input voltage = 230V	3 LEDs @ 1400mA U <sub>f</sub> 3.2V Max.

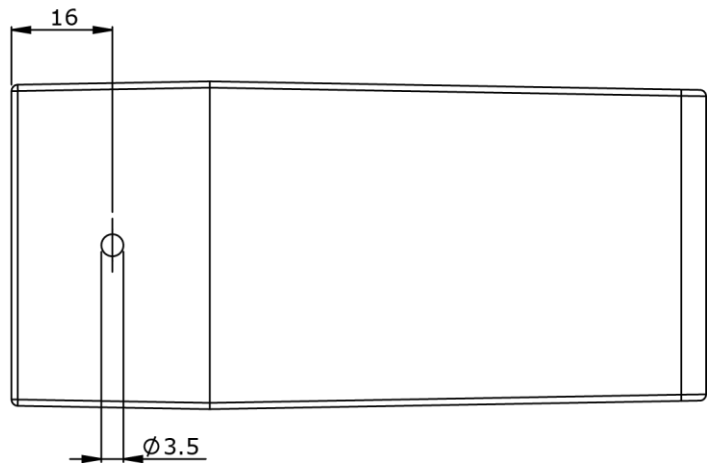
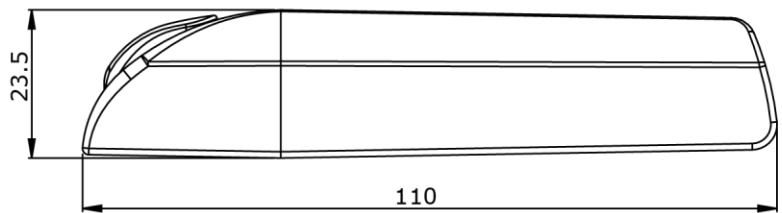
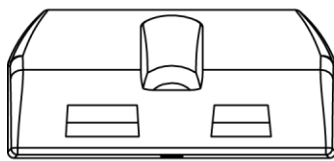
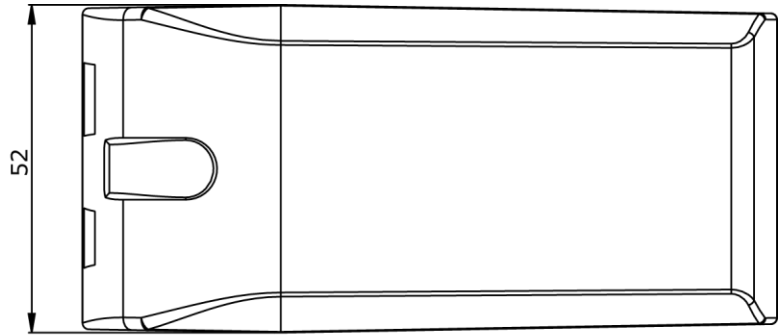
Thermal protection	Yes, against overheating
Output current overshoot	No
Output Isolation	Yes SELV EQ
Ambient Temperature range (Ta)	0 +45°C
Max. Case temperature (Tc)	<85°C
Storage Temperature range	-20 +50° C
Failure Rate	Nihil
RohS compliant	Yes
Number of LEDs	
Input voltage = 115V	6 LEDs @ 660mA U <sub>f</sub> 3.2V Max.
Input voltage = 115V	4 LEDs @ 1000mA U <sub>f</sub> 3.2V Max.
Input voltage = 115V	2 LEDs @ 1400mA U <sub>f</sub> 3.2V Max.

**Packaging**

Potting	No
Leads Pri.	H05RN-F 1mm <sup>2</sup>
Leads Sec.	0.2mm <sup>2</sup> – 1.5mm <sup>2</sup>
Lead Connection Method	Clamp or Lumoluce connector
Mounting Method	Screw

Weight	100 gram
Case color	grey, blue
Maximum case height	23.5 mm
Maximum case width	52 mm
Maximum case length	111 mm

**Technical drawings**



**Order**

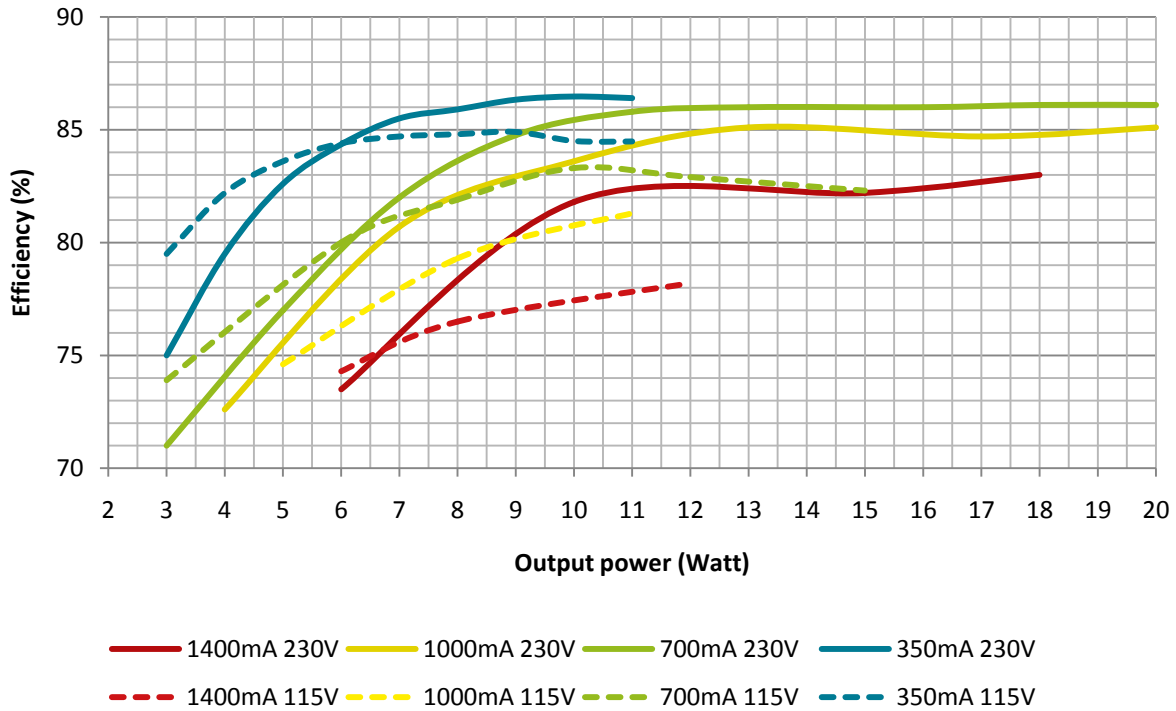
L05012 LEDlight 1-20VA 0.35-1.4A	L05012
----------------------------------	--------

**Disclaimer**

©2010, Lumotech Holland B.V. All rights reserved. Designs and specifications may change without prior notice.

Technical specifications

Efficiency



Power factor

