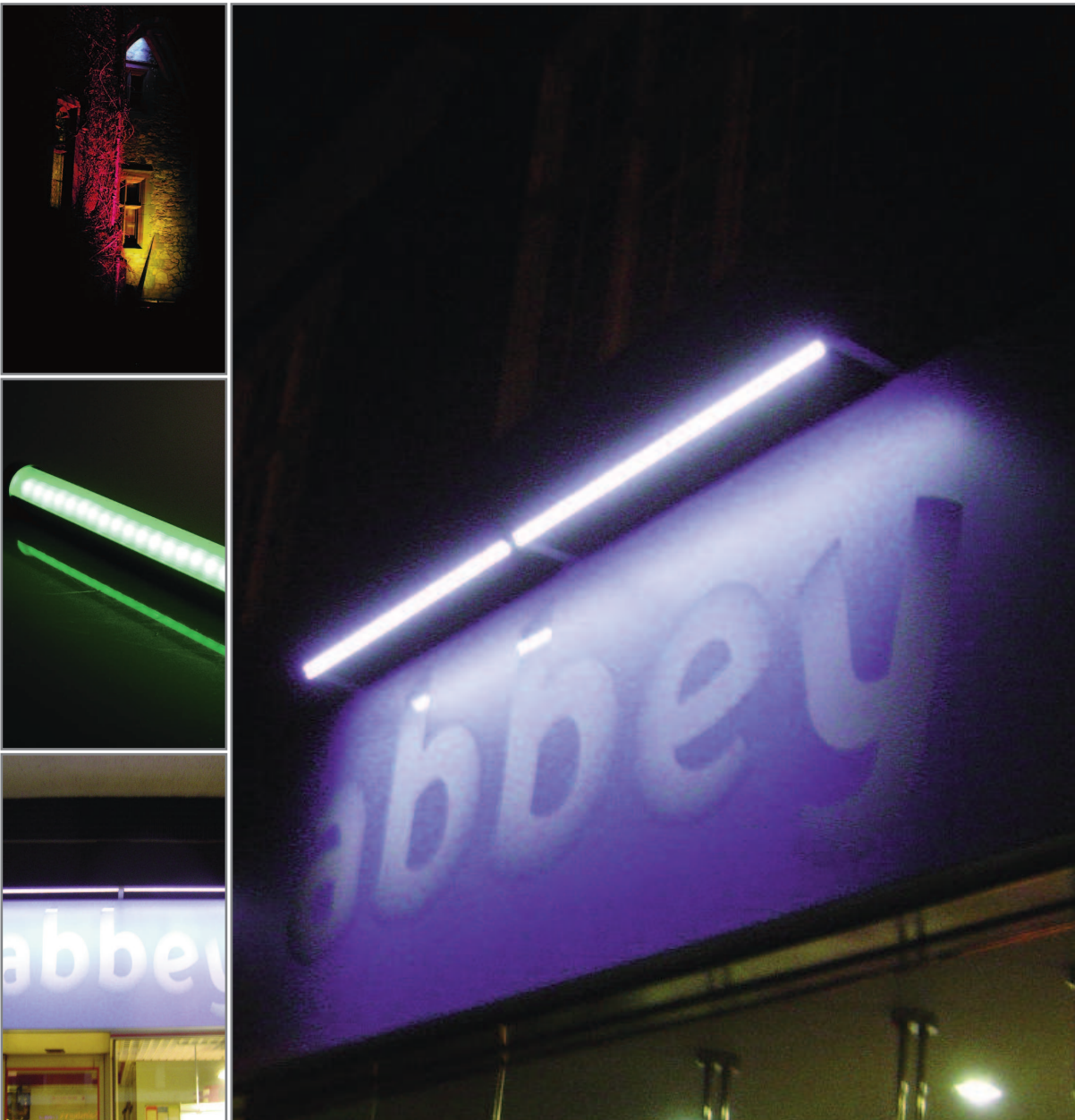


Sealed Orion

Linear LED Light system

The Sealed Orion is a highly reliable, professional system utilising LED technology to provide a strip or wash of standard or high intensity light that can be used in a variety of applications.

The Sealed Orion Linear Light System is manufactured utilising LEDs encased in a durable aluminium extrusion, fully encapsulated with clear potting compound and fitted with a frosted acrylic lens.



Sealed Orion

Part Number Sequencing

Single Colour Part Number Sequencing



Part Number	Colour	Total Illuminated Length (mm)	Total Unit Length (mm)	Typical Power Consumption (Watt)	Typical Current (mA)	Power Supply	RoHs
Single Coloured							
LS1-0139-3000-1	Warm White	100	139	1.6	66	LP1020-24-DP	Yes
LS1-0139-4000-1	Natural White	100	139	1.6	66	LP1020-24-DP	Yes
LS1-0139-5000-1	Cool White	100	139	1.6	66	LP1020-24-DP	Yes
LS1-0339-3000-1	Warm White	300	339	5	200	LP1020-24-DP	Yes
LS1-0339-4000-1	Natural White	300	339	5	200	LP1020-24-DP	Yes
LS1-0339-5000-1	Cool White	300	339	5	200	LP1020-24-DP	Yes
LS1-0639-3000-1	Warm White	600	639	10	400	LP1020-24-DP	Yes
LS1-0639-4000-1	Natural White	600	639	10	400	LP1020-24-DP	Yes
LS1-0639-5000-1	Cool White	600	639	10	400	LP1020-24-DP	Yes
LS1-0939-3000-1	Warm White	900	939	15	600	LP1020-24-DP	Yes
LS1-0939-4000-1	Natural White	900	939	15	600	LP1020-24-DP	Yes
LS1-0939-5000-1	Cool White	900	939	15	600	LP1020-24-DP	Yes
LS1-1239-3000-1	Warm White	1200	1239	20	800	LP1040-24-DP	Yes
LS1-1239-4000-1	Natural White	1200	1239	20	800	LP1040-24-DP	Yes
LS1-1239-5000-1	Cool White	1200	1239	20	800	LP1040-24-DP	Yes
LS1-1539-3000-1	Warm White	1500	1539	25	1000	LP1040-24-DP	Yes
LS1-1539-4000-1	Natural White	1500	1539	25	1000	LP1040-24-DP	Yes
LS1-1539-5000-1	Cool White	1500	1539	25	1000	LP1040-24-DP	Yes
LS1-1839-3000-1	Warm White	1800	1839	30	1200	LP1040-24-DP	Yes
LS1-1839-4000-1	Natural White	1800	1839	30	1200	LP1040-24-DP	Yes
LS1-1839-5000-1	Cool White	1800	1839	30	1200	LP1040-24-DP	Yes
LS1-2139-3000-1	Warm White	2100	2139	35	1400	LP1060-24-GG-290-DP	Yes
LS1-2139-4000-1	Natural White	2100	2139	35	1400	LP1060-24-GG-290-DP	Yes
LS1-2139-5000-1	Cool White	2100	2139	35	1400	LP1060-24-GG-290-DP	Yes
LS1-2439-3000-1	Warm White	2400	2439	40	1600	LP1060-24-GG-290-DP	Yes
LS1-2439-4000-1	Natural White	2400	2439	40	1600	LP1060-24-GG-290-DP	Yes
LS1-2439-5000-1	Cool White	2400	2439	40	1600	LP1060-24-GG-290-DP	Yes

Please note these units are also available in the following colours:

Red, yellow, green and blue. Please contact our sales department for further details

Technical Specifications

Ta = 25 °C

Supply Voltage:	24Vdc.
Typical Current:	As Specified.
Ambient Light conditions:	Zero to Daylight.
LED Spacing:	10mm
Storage Temperature:	-20°C to + 50 °C.
Operating Temperature:	-20°C to + 50 °C.

MATERIALS

Extruded Housing:	Aluminium.
Optical Lens:	Acrylic D6 frosted grade.
LED Lens:	Diffused Epoxy.
End Caps:	Aluminium.
Potting:	PC5836 - polyurethane
Finish:	All aluminium natural anodised to AA25.

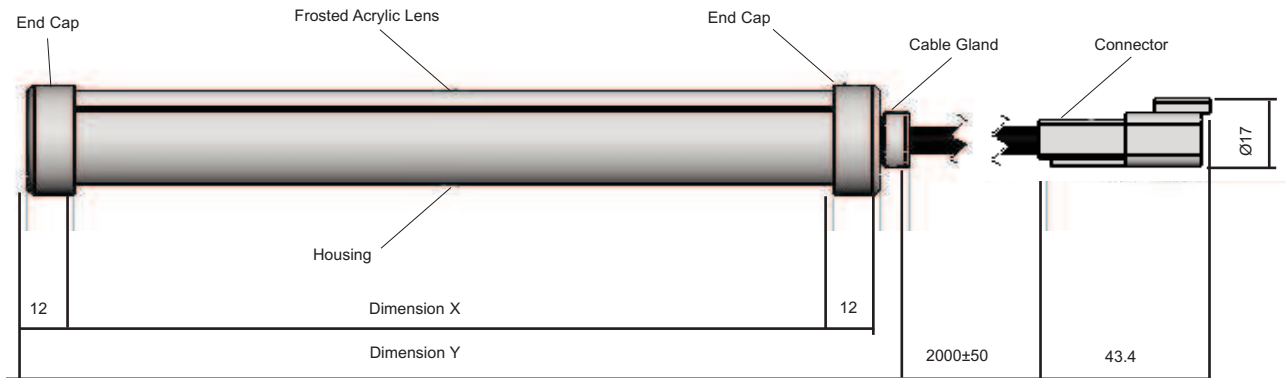
Stand alone single colour units will require a power supply as recommended in the product data overleaf.
Multiple units can be interlinked to a max rating of 40W. Please contact our sales department for further details.

Features & Benefits

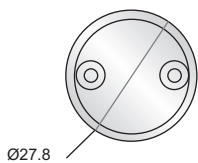
- Waterproof to IP55
- RoHS Compliant
- Virtually maintenance free
- Ultra low power consumption
- Impact resistant
- Ease of Installation

Applications

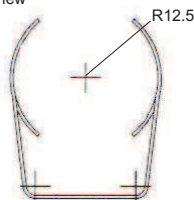
- Outdoor lighting
- Feature lighting
- Emergency lighting
- Retail display lighting
- Coves
- Exhibition and display applications
- Signage



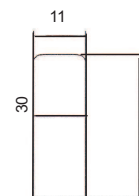
Side View
End Cap



Cushion Clip
Front View



Cushion Clip
Side View



All measurements are in mm

How to Order:

website: www.leds.co.uk • email: sales@marl.co.uk •

Marl International Limited • Marl Business Park • Ulverston • Cumbria LA12 9BN • United Kingdom

Tel: +44 (0)1229 582430 • Fax: +44 (0)1229 585155

The information contained in this datasheet does not constitute part of any order or contract and should not be regarded as a representation relating to either products or service. Marl International reserve the right to alter without notice the specification or any conditions of supply for products or service.



BS EN ISO 9001:2008
Approved Manufacturer