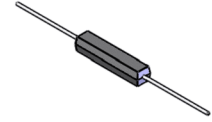
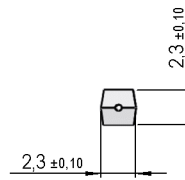
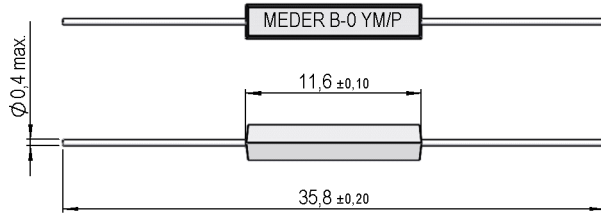
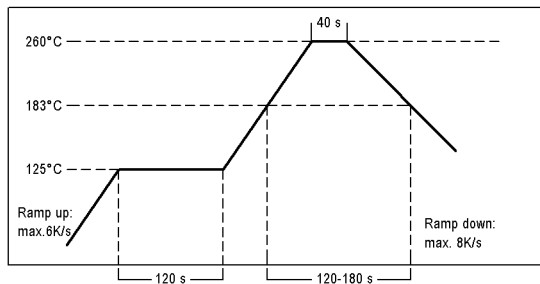


Products for tomorrow...

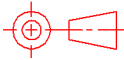


Reflow soldering conditions acc. to JEDEC norm J-STD-020C



MARKING

MEDER-label
 Production code EN60062/factory code
 MEDER-Logo
 Produktionscode EN60062/Fertigungsstätte



tolerances according to DIN ISO 2768 m

Magnetic properties	Conditions	Min	Typ	Max	Unit
Pull-In excitation (Reference value)	Reed switch unmodified measured in coil- "define operation"	10		15	AT
Test-Coil	Reed switch unmodified	KMS-01			

Contact data 87	Conditions	Min	Typ	Max	Unit
Contact-No.		87			
Contact-form		A			
Contact-material	Plating thicknesses are proprietary	Rhodium			
Contact rating	Any DC combination of V & A not to exceed their individual max.'s			10	W
Switching voltage	DC or Peak AC			200	V
Carry current	DC or Peak AC			0.5	A
Switching current	DC or Peak AC			0.4	A
Contact resistance static	Measured with 40% overdrive Start Value			150	mOhm
Breakdown voltage	according to IEC 255-5	230			VDC

Special Product Data	Conditions	Min	Typ	Max	Unit
Number of contacts		1			
Housing material		mineral filled epoxy			
Approval		UL-File-Nr. E156887			

Environmental data	Conditions	Min	Typ	Max	Unit
Shock	1/2 sine wave duration 11ms			30	g
Vibration	from 10 - 2000 Hz			20	g
Ambient temperature		-40		130	°C
Storage temperature		-50		130	°C
Cleaning		fully sealed			

Modifications in the sense of technical progress are reserved

Designed at: 15.04.09 Designed by: WKOVACS
 Last Change at: 10.07.11 Last Change by: DRUDOLF

Approval at: 05.03.10 Approval by: DRUDOLF
 Approval at: 10.07.11 Approval by: DRUDOLF

Rev. No.: 03