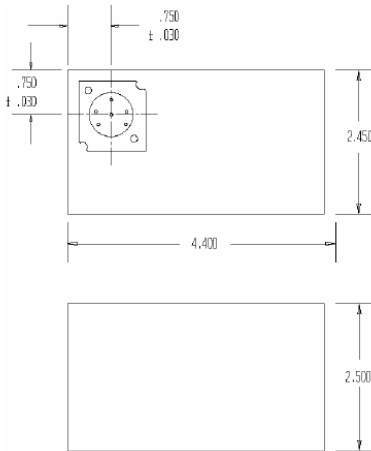


LCF-X590 – LITHIUM CARBON MONOFLUORIDE (CF_x)



BATTERY SPECIFICATIONS

| | |
|--------------------------------------|------|
| MAX. VOLTAGE (Volts) | 16.8 |
| MIN. VOLTAGE (Volts) | 10 |
| CAPACITY (Ah*) | 13 |
| WEIGHT (kg) | 0.5 |
| SPECIFIC ENERGY (Wh/kg) | 350 |
| ENERGY DENSITY (Wh/L) | 400 |
| * at 25°C, 2.0 Amp Load to 2.0 Volts | |

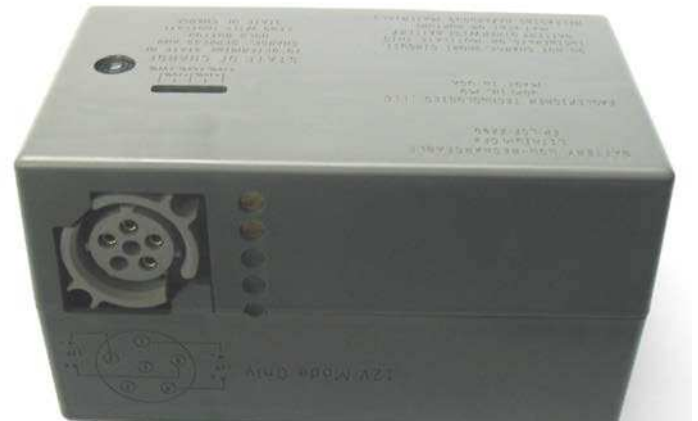
FEATURES

- Fully welded hermetically sealed cell construction for leak-free service
- Mechanical cell vent for safe operation
- Extreme High and Low temperature storage and operations capabilities
- Balanced cell chemistry for safe operation
- State of Charge Indicator
- SMBus Interface Capabilities
- Integrated Complete Discharge Device
- Low Voltage Disconnect
- Multiple Safety Features to prevent accidental failures

APPLICATIONS

This battery was designed as a direct replacement for BA-5590 family of batteries which are used in applications such as communication equipment, surveillance equipment, survival and emergency equipment, telemetry, measurement devices, etc. This battery was created to provide high capacity with half the size of a BA-5590.

This Li/CF_x is a highly reliable, high rate battery that can run at continuous or pulsed discharge at extreme temperatures ranges. This battery is the latest choice for high reliability, high energy and highest capacity in military application worldwide



EP PRODUCT SUPPORT

EaglePicher has responsive R&D and New Product Development (NPD) groups to assist you in all your technical inquiries. EP manufacturing facilities are ISO 9001 certified to ensure optimum performance of our products and all customers' specifications are met and/or exceeded.