

RL-6050

SURFACE MOUNT POWER INDUCTORS

DESCRIPTION

- SMD Power Inductor

ENVIRONMENTAL DATA

- Storage temperature range: -55°C to +130°C
- Operating temperature range: -40°C to +130°C

PACKAGING INFORMATION

- Packaging information: pg. 490, 495

FEATURES & APPLICATIONS

- High current, surface mount inductors offering 26 standard values ranging from 10 μ H to 1200 μ H
- Designed for high density surface mount applications including switching regulators, power amplifiers, power supplies and noise/EMI/RFI filtering
- Utilizes extremely rugged mounting pads with outstanding solderability and solder heat resistance

Verify operation with sample in actual circuit. Order samples at www.rencousa.com.

MECHANICAL DIMENSIONS

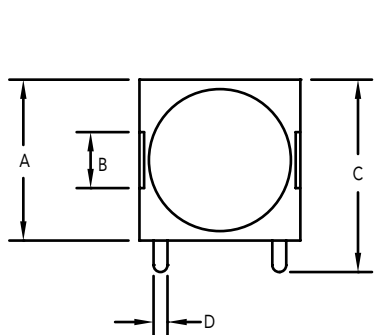
U.S. Standard (mm)

PART NUMBER	A (MAX.)	B ± 0.02 (0.51)	C (MAX.)	D (TYP.)	E (MAX.)	F (MAX.)
RL-6050	0.46 (11.68)	0.16 (4.06)	0.55 (13.97)	0.12 (3.05)	0.33 (8.38)	0.46 (11.68)

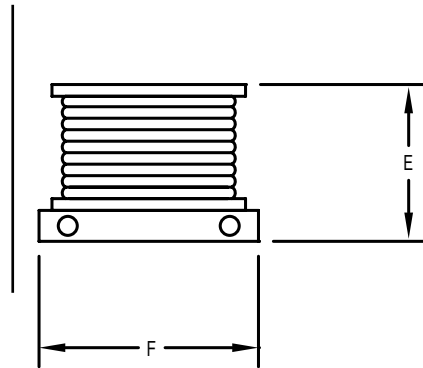
PART NUMBER	PART WEIGHT
RL-6050	2.70g (0.095oz)

G ± 0.02 (0.51)	H ± 0.02 (0.51)	I ± 0.02 (0.51)
0.24 (6.10)	0.16 (4.06)	0.10 (2.54)

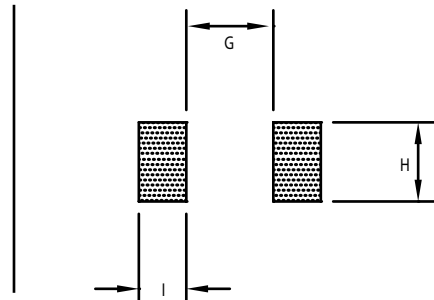
TOP VIEW



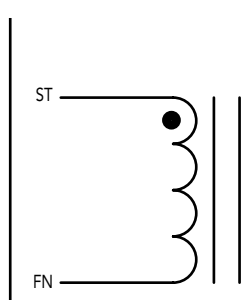
SIDE VIEW



RECOMMENDED LAND PATTERN



SCHEMATIC



RENCO ELECTRONICS INC.

595 International Place, Rockledge, FL 32955-4200 USA • www.rencousa.com • ISO 9001 Certified
Toll Free Engineering Hot Line: 800.645.5828 • P: 321.637.1000 • F: 321.637.1600



RL-6050

Renco Part No. RL-6050	Inductance (μ H)	DCR Max. (Ohms)	Isat (A)	Irms (A)
RL-6050-10	10.0	0.06	6.00	3.50
RL-6050-12	12.0	0.07	5.60	3.40
RL-6050-15	15.0	0.08	4.90	3.10
RL-6050-18	18.0	0.09	4.30	3.00
RL-6050-22	22.0	0.10	4.10	2.60
RL-6050-27	27.0	0.11	3.60	2.40
RL-6050-33	33.0	0.12	2.30	2.30
RL-6050-39	39.0	0.14	3.00	2.10
RL-6050-47	47.0	0.17	2.80	1.95
RL-6050-56	56.0	0.19	2.50	1.85
RL-6050-68	68.0	0.22	2.30	1.65
RL-6050-82	82.0	0.25	2.00	1.50
RL-6050-100	100.0	0.35	1.80	1.40
RL-6050-120	120.0	0.40	1.70	1.30
RL-6050-150	150.0	0.47	1.50	1.20
RL-6050-180	180.0	0.63	1.40	1.00
RL-6050-220	220.0	0.73	1.30	0.95
RL-6050-270	270.0	0.97	1.20	0.90
RL-6050-330	330.0	1.15	1.00	0.80
RL-6050-390	390.0	1.30	0.96	0.75
RL-6050-470	470.0	1.48	0.87	0.65
RL-6050-560	560.0	1.90	0.80	0.60
RL-6050-680	680.0	2.45	0.73	0.50
RL-6050-820	820.0	2.55	0.66	0.48
RL-6050-1000	1000.0	3.00	0.60	0.46
RL-6050-1200	1200.0	3.50	0.54	0.35

NOTES:

1. Isat - DC CURRENT THAT WILL CAUSE INDUCTANCE TO DROP BY 5%
2. Irms - CURRENT THAT CAUSES THE TEMPERATURE TO RISE APPROX. 40°C ABOVE AMBIENT OF 25°C
3. INDUCTANCE \pm 20% TESTED AT 10 kHz, 0.1 Vrms
4. ELECTRICAL SPECIFICATIONS MEASURED AT 25°C



RENCO ELECTRONICS INC.

595 International Place, Rockledge, FL 32955-4200 USA • www.rencousa.com • ISO 9001 Certified
Toll Free Engineering Hot Line: 800.645.5828 • P: 321.637.1000 • F: 321.637.1600

