

# RL-1284

## POWER LINE CHOKES

### DESCRIPTION

- Power Line Chokes

### ENVIRONMENTAL DATA

- Storage temperature range: -55°C to +130°C
- Operating temperature range: -40°C to +130°C

### PACKAGING INFORMATION

- Packaging information: pgs. 489, 493

### FEATURES & APPLICATIONS

- 45 standard values to choose from
- Inductances range from 3.9μH to 18,000μH
- Use of high saturation material makes these coils ideal for use in switching regulated power supply type applications
- Size of the coils make them easy to incorporate in equipment
- Switching regulators
- Typical applications include: power amplifiers, power supplies, SCR and TRIAC controls, speaker crossover networks, and filters

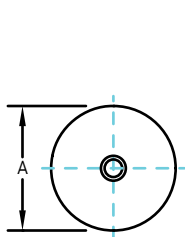
Verify operation with sample in actual circuit. Order samples at [www.rencousa.com](http://www.rencousa.com).

### MECHANICAL DIMENSIONS

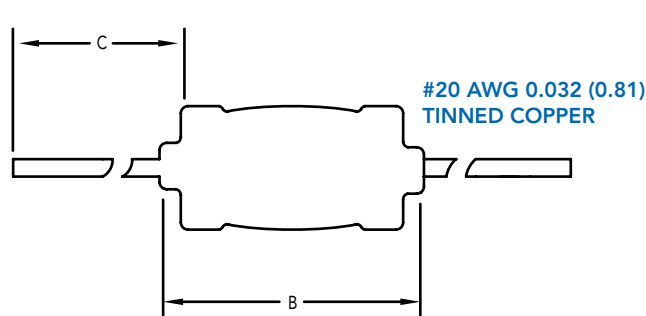
U.S. Standard (mm)

PART NUMBER	A (MAX.)	B (MAX.)	C (MIN.)	PART WEIGHT
RL-1284	0.26 (6.60)	0.70 (17.78)	1.00 (25.40)	1.5g (0.05oz)

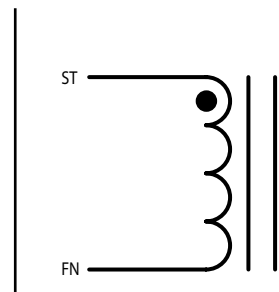
FRONT VIEW



SIDE VIEW



SCHEMATIC



**RENCO ELECTRONICS INC.**

595 International Place, Rockledge, FL 32955-4200 USA • [www.rencousa.com](http://www.rencousa.com) • ISO 9001 Certified  
Toll Free Engineering Hot Line: 800.645.5828 • P: 321.637.1000 • F: 321.637.1600



# RL-1284

Renco Part No. RL-1284	Inductance ( $\mu$ H)	DCR Max. (Ohms)	Isat (A)	Irms (A)
RL-1284-3.9	3.90	0.019	7.30	1.280
RL-1284-4.7	4.70	0.022	6.30	1.280
RL-1284-5.6	5.60	0.024	5.60	1.280
RL-1284-6.8	6.80	0.026	5.30	1.280
RL-1284-8.2	8.20	0.028	4.50	1.280
RL-1284-10	10.0	0.033	4.10	1.280
RL-1284-12	12.0	0.037	3.60	1.280
RL-1284-15	15.0	0.040	3.30	1.280
RL-1284-18	18.0	0.044	3.00	1.280
RL-1284-22	22.0	0.050	2.70	1.280
RL-1284-27	27.0	0.058	2.50	1.280
RL-1284-33	33.0	0.075	2.20	1.008
RL-1284-39	39.0	0.094	2.00	0.804
RL-1284-47	47.0	0.109	1.80	0.804
RL-1284-56	56.0	0.140	1.70	0.804
RL-1284-68	68.0	0.145	1.50	0.804
RL-1284-82	82.0	0.152	1.40	0.804
RL-1284-100	100.0	0.218	1.20	0.632
RL-1284-120	120.0	0.283	1.10	0.508
RL-1284-150	150.0	0.340	1.00	0.508
RL-1284-180	180.0	0.362	0.95	0.508
RL-1284-220	220.0	0.430	0.86	0.508
RL-1284-270	270.0	0.557	0.77	0.400
RL-1284-330	330.0	0.665	0.70	0.400
RL-1384-390	390.0	0.772	0.64	0.400
RL-1384-470	470.0	1.150	0.59	0.315
RL-1284-560	560.0	1.270	0.54	0.315
RL-1284-680	680.0	1.610	0.49	0.250
RL-1284-820	820.0	1.960	0.44	0.200
RL-1284-1000	1000.0	2.300	0.40	0.200
RL-1284-1200	1200.0	2.650	0.35	0.200
RL-1284-1500	1500.0	3.450	0.33	0.158
RL-1284-1800	1800.0	4.030	0.29	0.158
RL-1284-2200	2200.0	4.480	0.27	0.158

RL-1284 TABLE CONTINUES ON FOLLOWING PAGE

**NOTES:**

1. INDUCTANCE  $\pm$  15% TESTED AT 1.0 kHz, 0.1 Vrms
2. 10% AND 5% TOLERANCES OPTIONAL
3. ELECTRICAL SPECIFICATIONS MEASURED AT 25°C
4. Isat - DC CURRENT THAT WILL CAUSE INDUCTANCE TO DROP BY 5%
5. Irms - CURRENT THAT CAUSES THE TEMPERATURE TO RISE APPROX. 40°C ABOVE AMBIENT OF 25°C
6. PART FINISHED WITH 135°C POLYOLEFIN SLEEVING THAT MEETS UL-224 VW-1
7. FOR APPLICATIONS OVER 24 VOLTS VERIFY OPERATION WITH SAMPLE IN ACTUAL CIRCUIT



**RENCO ELECTRONICS INC.**

595 International Place, Rockledge, FL 32955-4200 USA • [www.rencousa.com](http://www.rencousa.com) • ISO 9001 Certified  
Toll Free Engineering Hot Line: 800.645.5828 • P: 321.637.1000 • F: 321.637.1600



# RL-1284

Renco Part No. RL-1284	Inductance ( $\mu$ H)	DCR Max. (Ohms)	Isat (A)	Irms (A)
RL-1284-2700	2700.0	5.90	0.240	0.125
RL-1284-3300	3300.0	6.56	0.220	0.125
RL-1284-3900	3900.0	8.63	0.200	0.100
RL-1284-4700	4700.0	10.50	0.180	0.100
RL-1284-5600	5600.0	13.90	0.166	0.082
RL-1284-6800	6800.0	16.30	0.151	0.082
RL-1284-8200	8200.0	20.80	0.136	0.065
RL-1284-10000	10000.0	26.40	0.125	0.050
RL-1284-12000	12000.0	29.90	0.114	0.050
RL-1284-15000	15000.0	42.50	0.098	0.039
RL-1284-18000	18000.0	48.30	0.091	0.039

#### NOTES:

1. INDUCTANCE  $\pm$  15% TESTED AT 1.0 kHz, 0.1 Vrms
2. 10% AND 5% TOLERANCES OPTIONAL
3. ELECTRICAL SPECIFICATIONS MEASURED AT 25°C
4. Isat - DC CURRENT THAT WILL CAUSE INDUCTANCE TO DROP BY 5%
5. Irms - CURRENT THAT CAUSES THE TEMPERATURE TO RISE APPROX. 40°C ABOVE AMBIENT OF 25°C
6. PART FINISHED WITH 135°C POLYOLEFIN SLEEVING THAT MEETS UL-224 VW-1
7. FOR APPLICATIONS OVER 24 VOLTS VERIFY OPERATION WITH SAMPLE IN ACTUAL CIRCUIT



**RENCO ELECTRONICS INC.**

595 International Place, Rockledge, FL 32955-4200 USA • [www.rencousa.com](http://www.rencousa.com) • ISO 9001 Certified  
Toll Free Engineering Hot Line: 800.645.5828 • P: 321.637.1000 • F: 321.637.1600

