

SX-4289

LH3 Steering Sensor with Torque and Position Output

The LH3 torque and position sensor is ideally suited for demanding Electric Power Steering systems.



ELECTRICAL¹

| | |
|-------------------------------|--|
| Torque Signal Linearity | ±3% |
| Torque Hysteresis | 0.5% |
| Torque Signal Microgradient | ±30% of theoretical slope over 0.4° interval |
| Torque Signal Sensing Angle | ±8° |
| Position Signal Linearity | ±1.5% |
| Position Signal Microgradient | ±30% of theoretical slope over 2° interval |
| Total Resistance | 518 Ω ±30% |

MECHANICAL

| | |
|--|------------------|
| Torque Mechanical Travel | ±11.4° |
| Turning Torque (rotor to rotor) | 0.03 NM Max. |
| Turning Torque (position rotor to housing) | 0.06 NM Max. |
| Position Mechanical Travel | Continuous |
| Weight | 95 grams maximum |

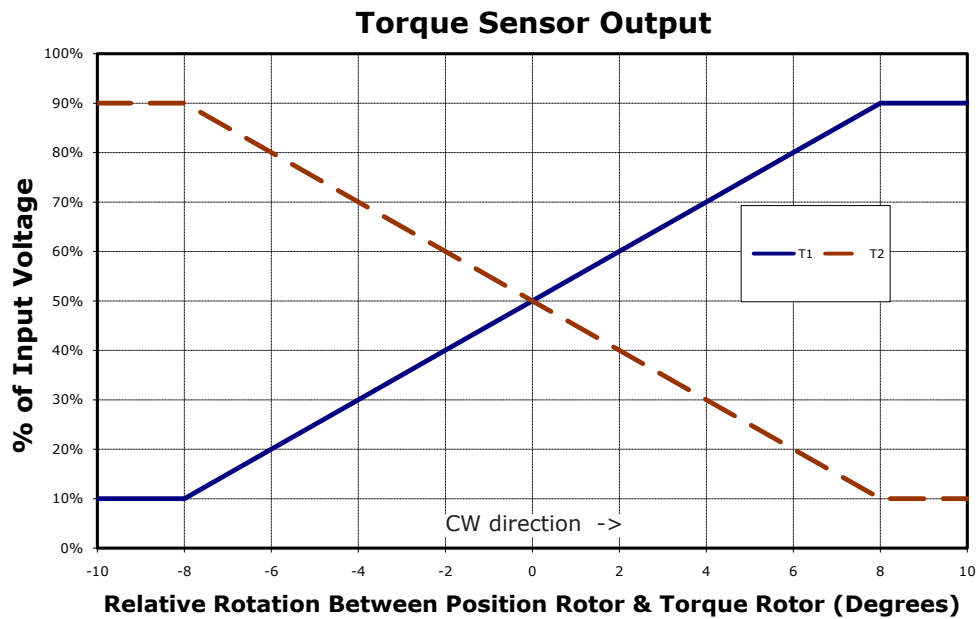
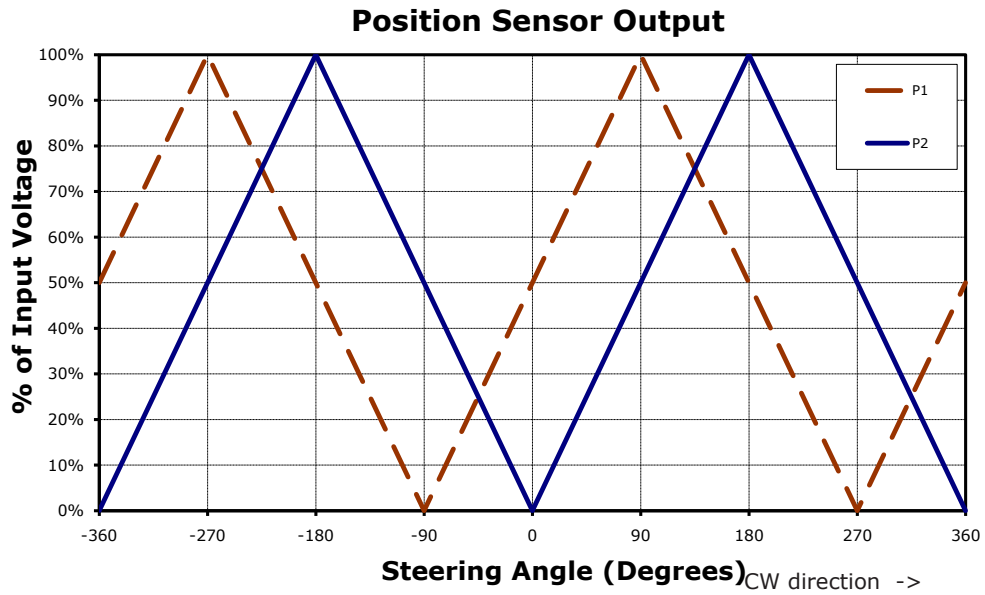
ENVIRONMENTAL

| | |
|-----------------------------|---|
| Operating Temperature Range | -40°C to +85°C |
| Shock | 14 ms half-sine at 300 m/s ² |
| Vibration | 10 to 55 Hz with 1 mm P-P constant displacement, 120 hours each of 3 planes |
| Torque Rotational Life | 1 million cycles |
| Position Rotational Life | 1 million cycles |
| Storage Temperature Range | -40°C to +105°C |

¹ Specifications subject to change without notice. Complete specifications and test methods per BI Technologies specification HEP 32056

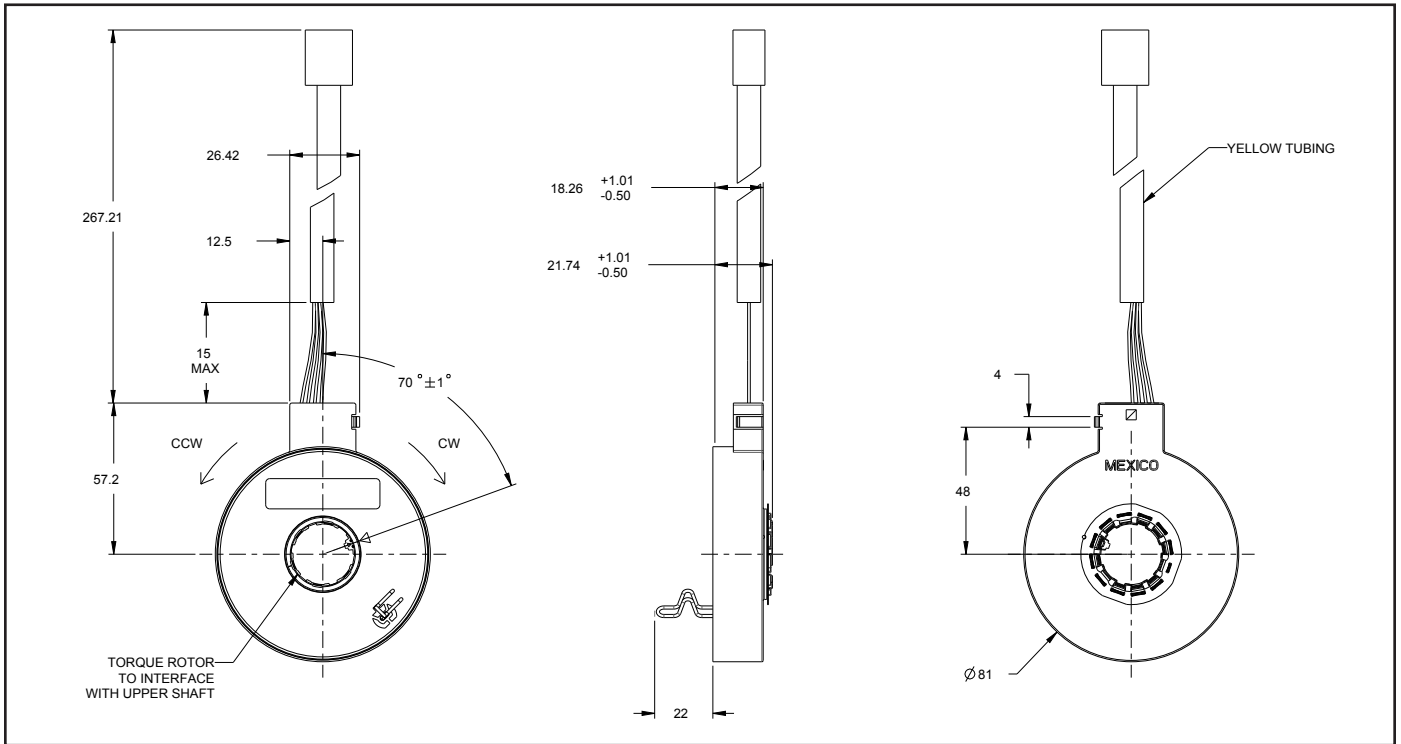
SX-4289

OUTPUT CHARTS



SX-4289

OUTLINE DRAWING



Tolerances ± 0.25 mm unless otherwise specified. See drawing # 122-4289-80 for details.

PINOUTS

| PIN OUTS-6 PIN CONNECTOR | | |
|--------------------------|---|---|
| PACKARD 15336723 | | |
| 1 | 2 | 3 |
| 4 | 5 | 6 |

| PIN No. | SIGNAL | WIRE COLOR |
|---------|-----------------|------------|
| 1 | T1 | BLUE |
| 2 | V _{CC} | RED |
| 3 | T2 | PURPLE |
| 4 | PI | BROWN |
| 5 | GND | BLACK |
| 6 | P2 | WHITE |

SX-4289

RECOMMENDED INTERFACE

