

Data sheet

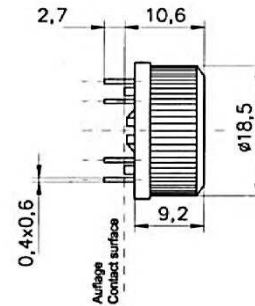
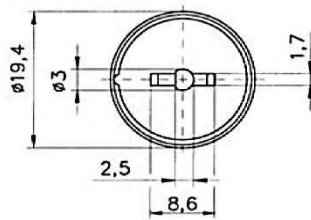
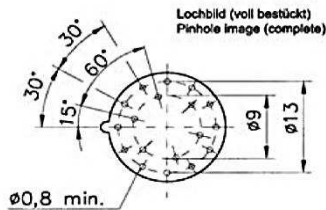
Rotary knob switches

Serie 417



Type 417

Basic design: width 19,4 mm, operation by screwdriver



Technical Data

Switch resistance initial value	≤ 25 m Ω	Capacity between two contacts	≤ 3 p F
Switch resistance after 15 000 cycles	≤ 50 m Ω	Switching mode	non shorting (white bottom plate), shorting (black bottom plate)
Insulation resistance	1 x 10 ⁹ Ω	Number of wafers	1 / single wafer
Test voltage	1 kV- / 1kV DC	Indexing angle	30°
Switching voltage	max. 150 V DC / AC	Stops	fixed or without stop
Switching current	max. 130 mA, Ag plated	Operating torque	2 – 4.5 Ncm
Switching power	max. 5 VA, Ag plated	Solder terminals	for printed circuit
Steady current at 20°C ambient temperature	3 A	Contact material	silver plated copper alloy
Operating life at maximum power	≥ 15 000 cycles	Insulation material	plastic
Operating life no load	≥ 20 000 cycles	Switching combinations (see page 2)	1 x 2 to 1 x 12; 2 x 2 to 2 x 6 3 x 2 to 3 x 4; 4 x 2 to 4 x 3; 6 x 2

This catalogue gives no information on product availability. The information is only for product description and is not legally binding. Any technical item is subject to change.