

Data sheet

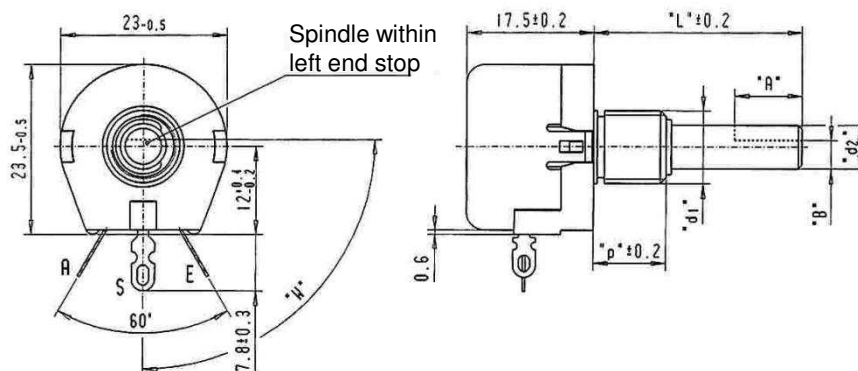
Wirewound preset potentiometers

Ordering code no.: 31 096.....



Series ABW 1
Type ABW 1

Basic design: encased, nominal width 23 mm, solder tag terminals



Technical data

| | | | |
|--------------------------|--|-------------------------|-----------------------------------|
| Rated resistance range | 5 Ω – 22 kΩ | Temperature coefficient | see table page 84 |
| Resistance tolerance | ± 10 % (< 10 Ω ± 20 %) on request ± 5 % | Insulation resistance | 1 GΩ |
| Law (resistance taper) | lin (lg on request) | Electrical travel | 265° ± 5° |
| Independent linearity | ± 2 % (on request ± 1 %) | Mechanical travel | 285° ± 5° on request 270° ± 5° |
| Rated dissipation | 1 W / 40 °C | Operating torque | 0.8 – 3 Ncm |
| Limiting element voltage | 300 V | End stop torque | 100 Ncm |
| Isolation voltage | 1 kV~ | Durability | 10 000 cycles |
| Temperature range | -40 °C to + 90 °C | | |

Spindles

- Metal or plastic moulded (see table)
- End of spindle according to customer specification (length, flat)

| l (mm) | p (mm) | d2 (mm) | d1 |
|-------------|------------------|---------|------------|
| standard 50 | 10, on request 5 | 6 | M10 x 0.75 |

Technical details subject to change

This catalogue gives no information on product availability. The information is only for product description and is not legally binding. Any technical item is subject to change.