

Data sheet

Rotary Potentiometer

Model P260



- 12.7mm (1/2") square rotary potentiometer
- Sealed or dust proof
- Conductive plastic element
- 1,000,000 cycles life rotary switch option detent option
- Multiple gangs available
- RoHS compliant

Model styles

Side adjust, potentiometer Module (up to 6 gangs)	P260P	Side adjust, with detent module (up to 6 gangs)	P260D
Side adjust, with rotary switch module (up to 5 gangs)	P260S	Top adjust, potentiometer module (up to 2 gangs)	P260T

Electrical ¹

Resistance range, Ohms	500 -1M	Insulation resistance, min.	1.000 megohms
Standard resistance tolerance	± 10 %	Gang error (Multi-ganged), max.	+/-3 dB (-40 dB to 0dB)
Residual resistance, max.	2 ohms	Actual electrical travel, nominal	265°
Input voltage, max.	350 Vac	Switch contact resistance, max.	100 milli ohms max.
Power rating, watts	0.5 W- B taper, 0.25 W- others	Switch power rated	0.5 A at 30Vdc
Dielectric strength	1.500 Vac, sea level		

Mechanical

Total mechanical travel	295°± 10°	Rational torque, max.	2.5 oz-in (0.5 oz-in each additional gang)
Static stop strength	40 oz-in	Switch detent, minimum	2.0 oz-in

Environmental

Operating temperature range	-55 °C to +125 °C	IP rating	Sealed = IP66 Dust proof = IP50
Rotational life	1,000,000 cycles		

¹ Specifications subject to change without notice.

Data sheet

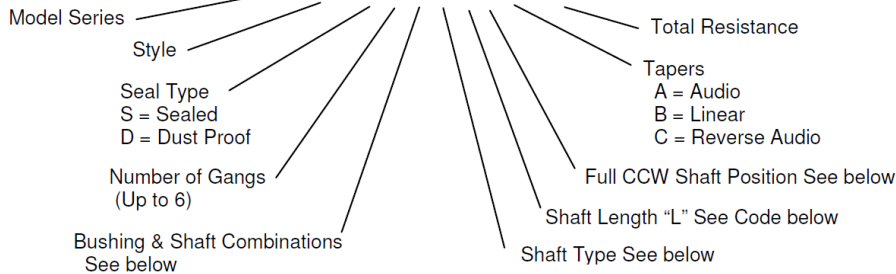
Rotary Potentiometer

Model P232

Ordering information ²

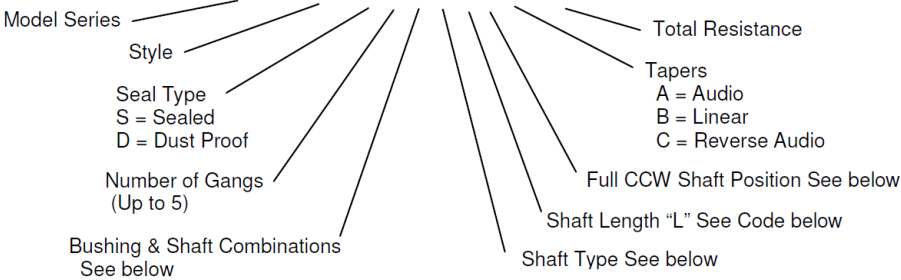
P260P – potentiometer module

P260 P - D 2 A F 1 C B 100K



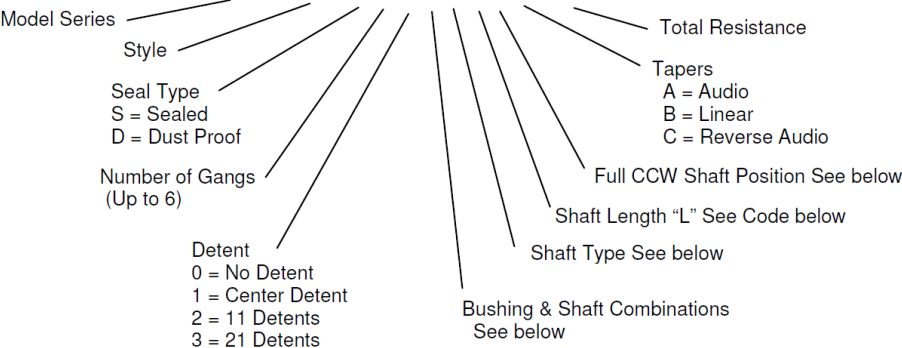
P260S – with rotary switch module

P260 S - D 2 A F 1 C B 100K



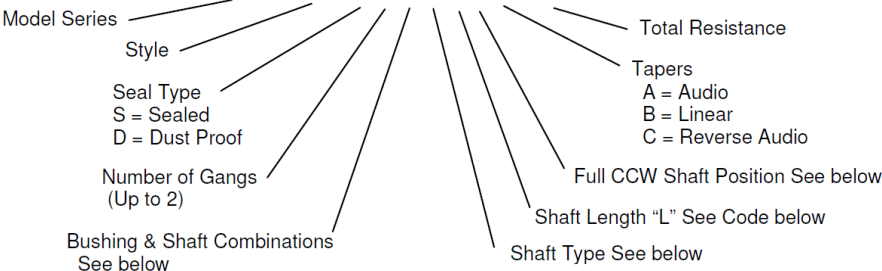
P260D – with detent module

P260 D - D 2 0 A F 1 C B 100K



P260T – top adjust, potentiometer module

P260 T - D 2 A F 1 C B 100K



² Contact our customer service for custom designs and features.

Data sheet

Rotary Potentiometer

Model P260

Bushing & Shaft Combinations

CODE	BUSHING SIZE	BUSHING LENGTH "M"	SHAFT ϕ
A	6.35mm (1/4")	6.35mm (1/4")	3.2mm (1/8")
B	9.5mm (3/8")	9.5mm (3/8")	6.35mm (1/4")

Shaft Type and Shaft Length "L" Code
For 3.2mm (1/8")

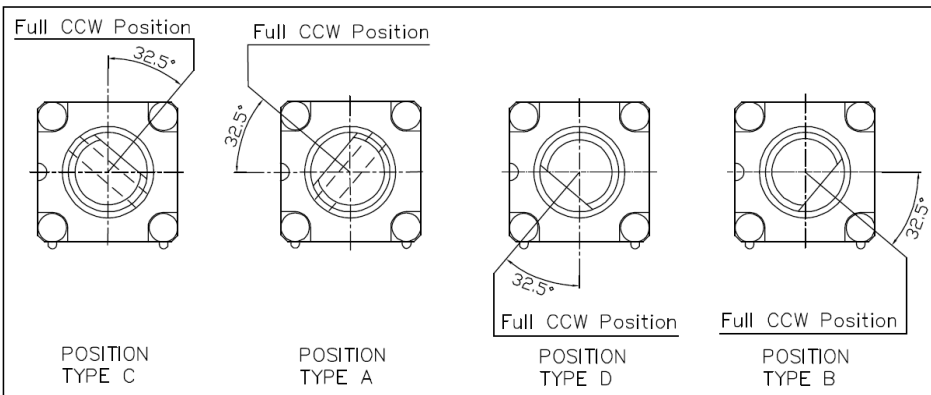
S-TYPE							F-TYPE						
L	12	16	20	24	28	32	L	12	16	20	24	28	32
T	4	5	8	8	8	10	T	4	5	8	8	8	10
CODE	1	2	3	4	5	6	CODE	1	2	3	4	5	6

Shaft Type and Shaft Length "L" Code
For 6.35mm (1/4")

S-TYPE							F-TYPE				
L	12	16	20	24	28	32	L	20	24	28	32
T	8	8	12	12	T	8	8	12	12		
CODE	1	2	3	4	5	6	CODE	3	4	5	6

Shaft Position (F-Type Shaft)

Dashed lines on Type "C" and Type "A" shows position of adjustment slot for S-Type



Standard resistance values, Ohms

500 1K 2K 5K 10K 20K 50K 100K 200K 500K 1MEG

² Contact our customer service for custom designs and features.

Data sheet

Rotary Potentiometer

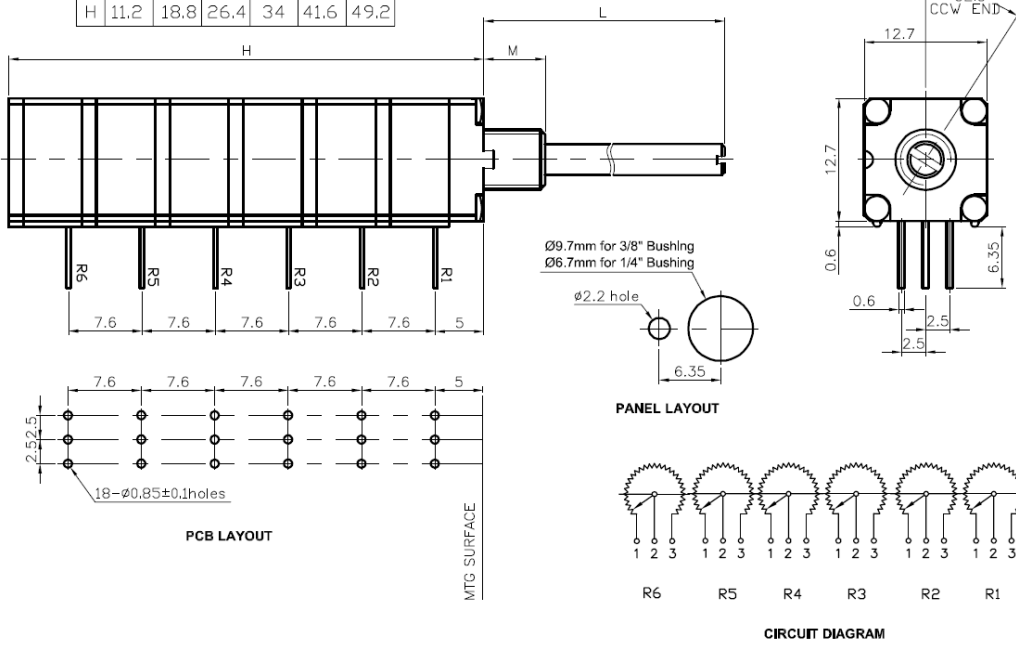
Model P260

Outline drawing

P260P – potentiometer module

X= NUMBER OF GANGS

X	1	2	3	4	5	6
H	11.2	18.8	26.4	34	41.6	49.2



P260S – with rotary switch module

X= NUMBER OF GANGS + 1 SWITCH
(SWITCH WILL BE IN LAST POSITION)

X	1+SW	2+SW	3+SW	4+SW	5+SW
H	18.8	26.4	34	41.6	49.2

