

Data sheet

Rotary Potentiometer

Model P140



- 14 mm rotary potentiometer
- Dual unit
- Conductive plastic element
- With / without bushing
- Insulated shaft
- RoHS compliant

Model styles

Side adjust, without bushing	P140KV	Top adjust, without bushing	P140KH
Side adjust, with bushing	P140KV1	Top adjust, with bushing	P140KH1

Electrical ¹

Resistance range	500 Ω – 1 M Ω	Dielectric strength	500 Vac, 1 minute
Standard resistance tolerance	± 20 %	Insulation resistance, min.	100 M Ω at 250 Vdc
Residual resistance	20 Ω max.	Silding noise	100 mV max.
Input voltage	50 Vac max.	Gang error (Multi-ganged)	-40 dB – 0 dB, ± 3 dB
Power rating	0.05 W	Actual electrical travel, nominal	260°

Mechanical

Total mechanical travel	300° ± 10 °	Rational torque, max.	2.5 oz-in
Static stop strength	70 oz-in		

Environmental

Operating temperature range	-20 °C to +70 °C	Rotational life	30 000 cycles
-----------------------------	------------------	-----------------	---------------

¹ Specifications subject to change without notice.

Data sheet

Rotary Potentiometer

Model P140

Ordering information²

P140 KV1 - F 20 B R100K

Model Series

Style

Shaft Type: see below

Shaft Length "L" see below

Total Resistance

Tapers

A = Audio

B = Linear

C = Reverse Audio

Shaft types

	F-TYPE						Y-TYPE				
WITH BUSHING	L	15	20	25	30	L	15	20			
	T	7	12	12	12	T	7	12			
WITHOUT BUSHING	L	15	20	25	30	35	L	15	20		
	T	4.5	7	12	12	12	T	5	7		

Standard resistance values, Ohms

500 1K 2K 5K 10K 20K 50K 100K 200K 500K 1MEG

² Contact our customer service for custom designs and features.

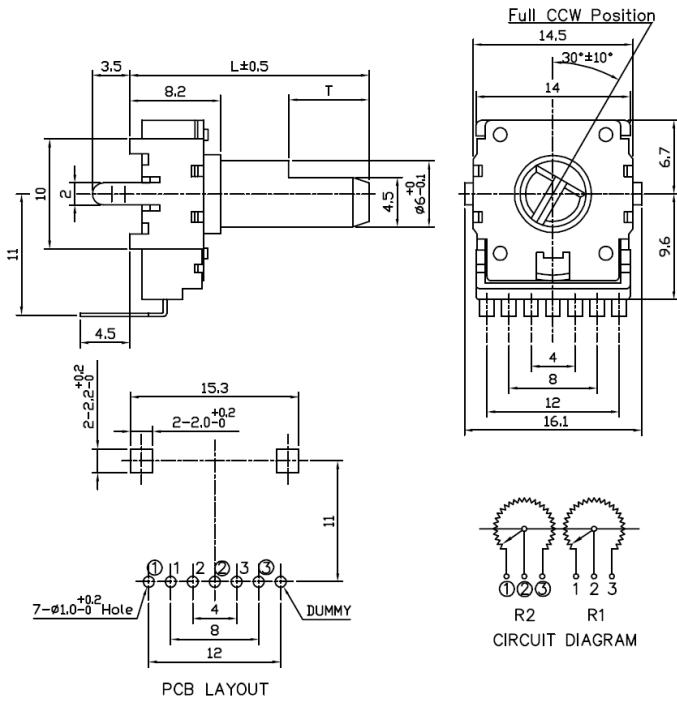
Data sheet

Rotary Potentiometer

Model P140

Outline drawing

Model P140KH (Top Adjust, without Bushing)



Model P140KH1 (Top Adjust, with Bushing)

