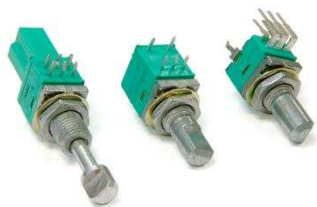


Data sheet

Rotary Potentiometer

Model P09x



- 9 mm rotary potentiometer
- Multi – ganged
- Conductive plastic element
- 100 000 cycles life
- Metal shaft / bushing
- Switch / push-lock option
- RoHS compliant

Model styles

| | | | |
|---|-------|--|--------|
| Side adjust, PCB pins, up to 8 gangs | P09xN | Top adjust, PCB pins, up to 2 gangs | P09x5N |
| Side adjust, PCB pins, up to 8 gangs, with Switch | P09xS | Side adjust, PCB pins, with push-lock, up to 2 gangs | P09xP |

Electrical ¹

| | | | |
|-------------------------------|---------------------------------------|-----------------------------------|-----------------------|
| Resistance range, Ohms | 1 kΩ – 500 kΩ | Insulation resistance, min. | 100 M ohms at 250 Vdc |
| Standard resistance tolerance | ± 20 % | Sliding noise | 100 mV max. |
| Residual resistance | 20 Ω max. | Gang error (Multi-ganged) | -40 dB – 0 dB, ±3 dB |
| Input voltage, max. | 50 Vac max. | Actual electrical travel, nominal | 260° |
| Power rating, watts | Taper B: 0.05W Other Tapers: 0.25W | Switch contact resistance | < 100 milli Ω |
| Dielectric strength | 300 Vac, 1 minute | Switch power rated | 3.0 A at 16 Vdc |

Mechanical

| | | | |
|-------------------------|-----------|----------------------------------|-----------|
| Total mechanical travel | 300°± 10° | Rational torque, max. | 2.5 oz-in |
| Static stop strength | 50 oz-in | Switch rotational angle, maximum | 50° |

Environmental

| | | | |
|-----------------------------|------------------|-----------------|----------------|
| Operating temperature range | -10 °C to +70 °C | Rotational life | 100 000 cycles |
|-----------------------------|------------------|-----------------|----------------|

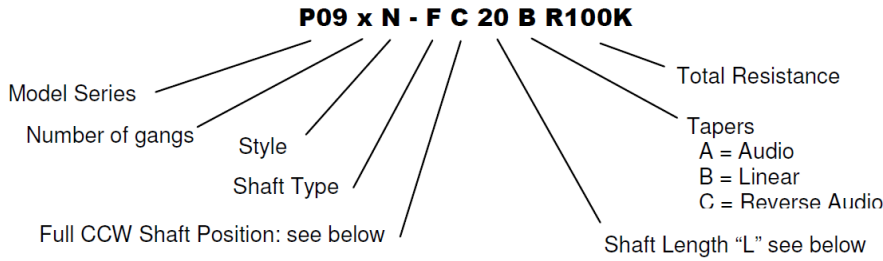
¹ Specifications subject to change without notice.

Data sheet

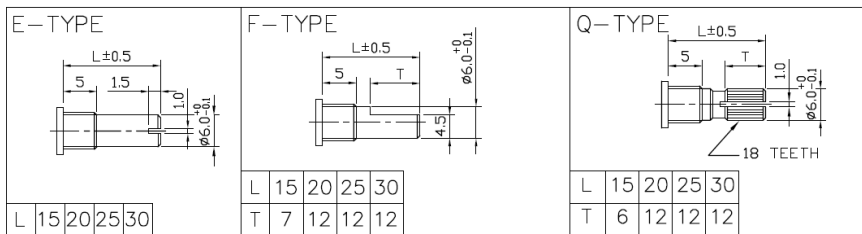
Model P09x

Rotary Potentiometer

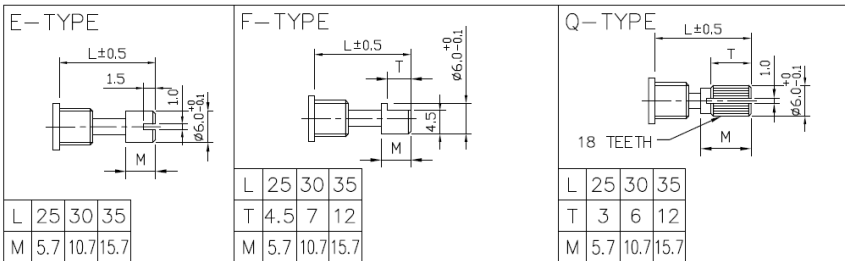
Ordering information²



Shaft Types (P09xN, P09xS, P09x5N)

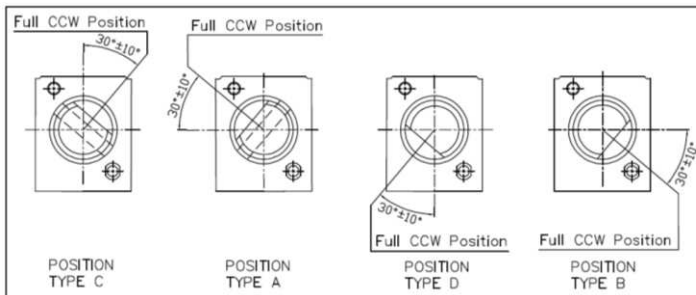


Shaft Types for Push-Lock (P09xP)



Shaft Position (F-Type Shaft)

Dashed lines on Type "C" and Type "A" shows position of adjustment slot for E-Type and Q-Type shafts



Standard resistance values, Ohms

500 1K 2K 5K 10K 20K 50K 100K 200K 500K

² Contact our customer service for custom designs and features.

Data sheet

Rotary Potentiometer

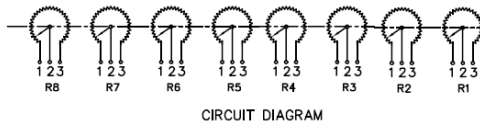
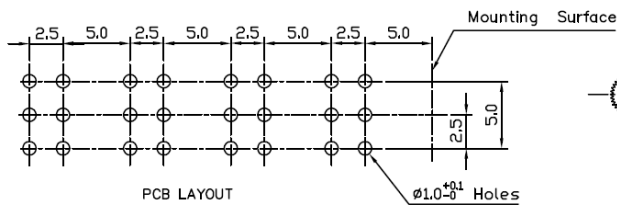
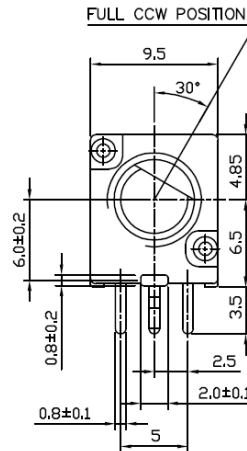
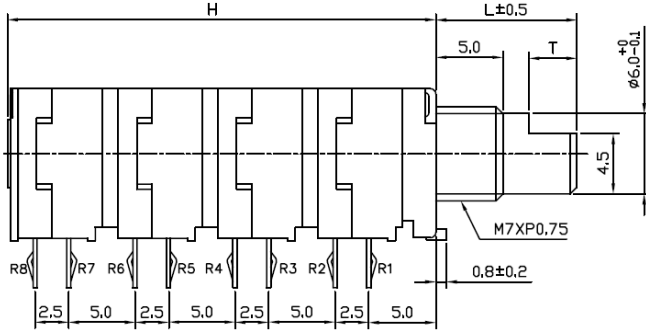
Model P09x

Outline drawing

Model P09xN (Side Adjust, PCB pins, up to 8 gangs)

X = Number of Gangs

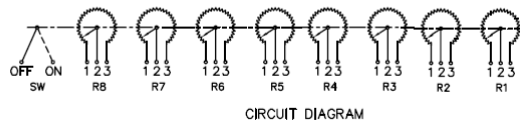
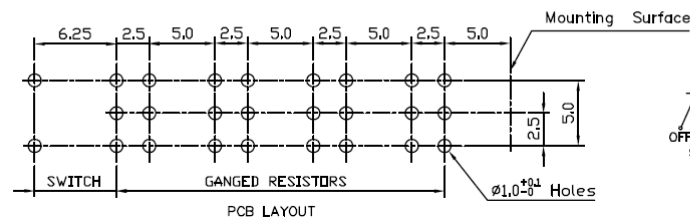
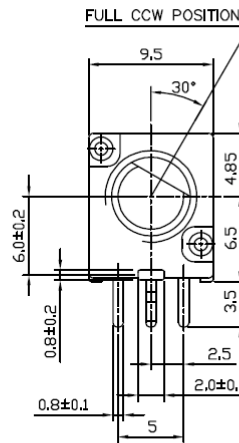
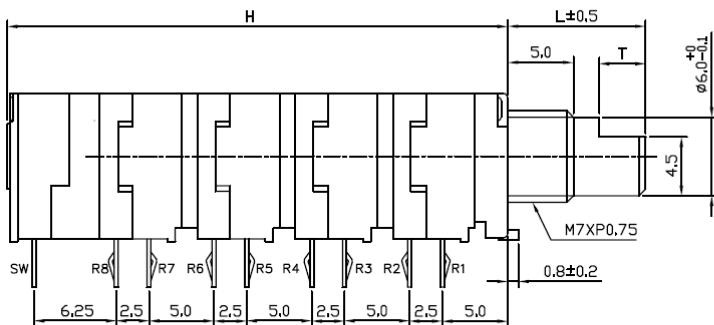
| | | | | | | | | |
|---|------|------|-------|-------|-------|-------|-------|------|
| X | 1 | 2 | 3 | 4 | 5 | 6 | 7 | 8 |
| H | 7.05 | 9.55 | 14.55 | 17.05 | 22.05 | 24.55 | 29.55 | 32.0 |



Model P09xs (Side Adjust, PCB pins, up to 8 gangs, with Switch)

X = Number of Gangs + 1 Switch

| | | | | | | | | |
|---|------|------|------|------|------|------|------|-------|
| X | 1 | 2 | 3 | 4 | 5 | 6 | 7 | 8 |
| H | 13.3 | 15.8 | 20.8 | 23.3 | 28.3 | 30.8 | 35.8 | 38.25 |



Data sheet

Rotary Potentiometer

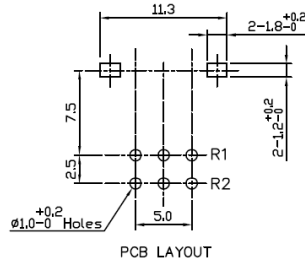
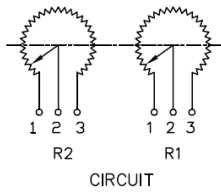
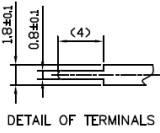
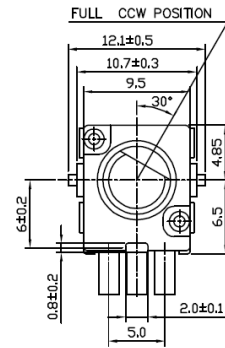
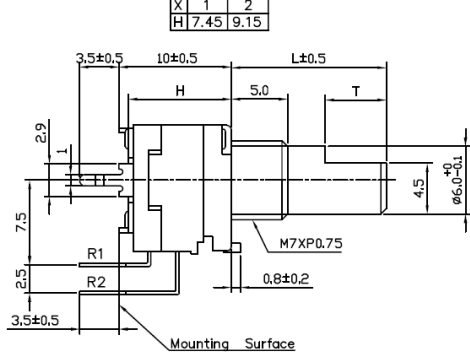
Model P09x

Outline drawing

Model P09x5N (Top Adjust, PCB pins, up to 2 gangs)

X = Number of Gangs

| | | |
|---|------|------|
| X | 1 | 2 |
| H | 7.45 | 9.15 |



Model P09xP (Side Adjust, PCB pins, with Push-Lock, up to 2 gangs)

X = Number of Gangs

| | | |
|---|-------|-------|
| X | 1 | 2 |
| H | 20.75 | 23.25 |

