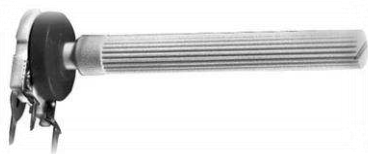


## Data sheet

### Cermet rotary potentiometers

Ordering code no.: 21 456 ....



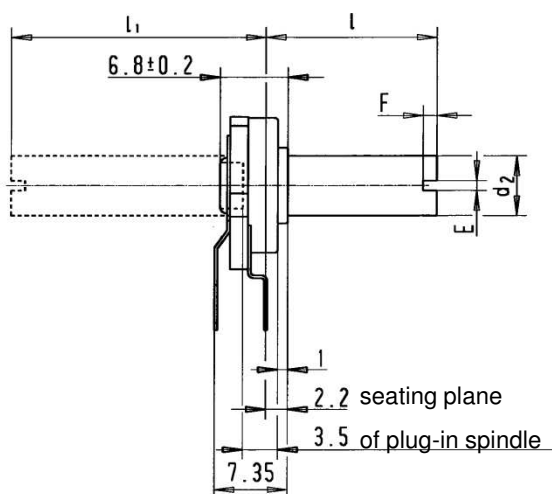
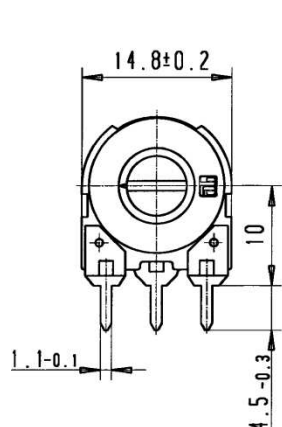
**Series 456**

**Type VC 456/30**

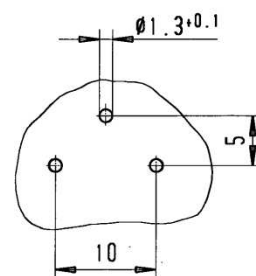
Basic design: encased knob, double metal wiper

#### Special versions

- Snap-in terminals
- Carbon contact wiper
- Cover with scale



piercing details



#### Technical data

Rated resistance range	22 Ω-4.7 MΩ	Temperature coefficient	± 250 ppm / °C
Resistance tolerance	± 20 % *	Electrical travel	240° ± 10°
Law (resistance taper)	lin *	Mechanical travel	270° ± 10°
Independent linearity	± 10 % *	Operating torque	0.5 - 2.5 Ncm
Rated dissipation	1 W / 70 °C ( 1.5 W / 40 °C)	End stop torque	≥ 10 Ncm
Limiting element voltage	300 V	Durability	10 000 cycles
Temperature range	- 40 °C to + 90 °C	* other values and laws on request	

#### Spindles

- Plastic moulded, suitable for both sides
- Versions and measurements see table page 25
- Potentiometers also available without spindle

Further adjustment slots for operating spindles on request e. g. square or D-version  
 Technical details subject to change

This catalogue gives no information on product availability. The information is only for product description and is not legally binding. Any technical item is subject to change.