

**Data sheet**

**Cermet preset potentiometers**

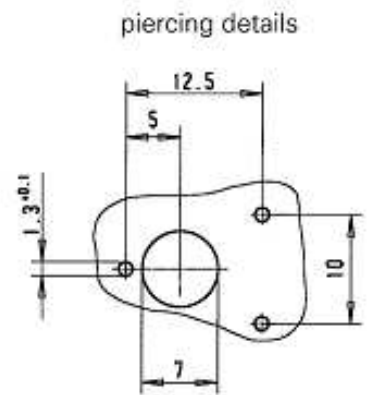
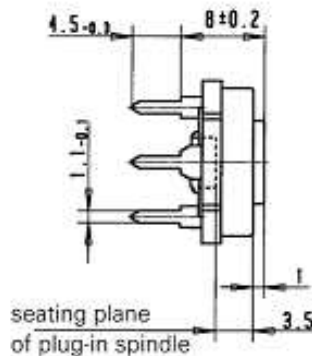
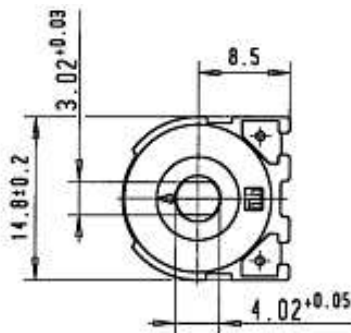
**Ordering code no.: 20 414.....**



**Series 415**  
**Type HC 414/30**

Basic design: encased, double metal wiper

- Special versions:**
- Snap-in soldering terminals
  - Carbon contact wiper
  - Cover with scale



**Techn**

Rated resistance range	22 Ω – 4.7 MΩ	Temperature coefficient	± 250 ppm / °C
Resistance tolerance	± 20 % *	Electrical travel	240° ± 10° *
Law (resistance taper)	lin *	Mechanical travel	270° ± 10°
Independent linearity	± 10 % *	Operating torque	0.5 – 2.5 Ncm
Rated dissipation	1 W / 70 °C (1.5 W / 40 °C)	End stop torque	10 Ncm
Limiting element voltage	300 V	Durability	200 cycles
Temperature range	-40 °C to + 90 °C	Plastic moulded spindles	see page 24

\* other values on request

Further adjustment slots for operating spindles on request e. g. square or D-version

This catalogue gives no information on product availability. The information is only for product description and is not legally binding. Any technical item is subject to change.