

## Data sheet

### Cermet Presets

### Model 35



- 3 mm Single-Turn
- open frame surface mounte
- cermet trimming
- potentiometer

#### Models available

Top adjust 35 W

#### Electrical

Resistance range 100 to 1,000,000 Ohms Mecahnical travel (35E) 280° ± 20°

Standard resistance range tolerance ± 25 % Insulation resistance, min. 100 Mohms

Input voltage, maximum 50 V Resolution Essentially infinite

Power rating 0.1 W @ 70 °C Contact resistance variation 5 % max.

End resistance, maximum > 100 Ohms: 20 Ohms max.; > 1000 Ohms: 2 % max. Temperature coefficient of resistance ± 250 ppm / °C

Actual electrical travel 200° ± 20°

#### Mechanical

Torque, max. (35 W, 35 C) 2.8 in. oz. Weight, approx. 0.01 oz.

Torque, max. (35 E) 1.4 in. oz. Wiper position Approx. 50 %

#### Environmental

Operating temperature range - 40 °C to + 125 °C Rational life, 20 cycles ± 15 % ΔR

Load life, 0.1 W, 1000 hours, 70 °C ± 5 % ΔR Resistance to solder heat 260 °C for 10 sec.

Aqueous cleaning not recommended

**Data sheet**

**Cermet Presets**

**Model 35**

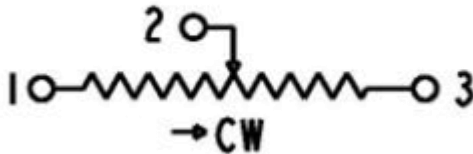
**Ordering information**

**35 W R10K LF TR**

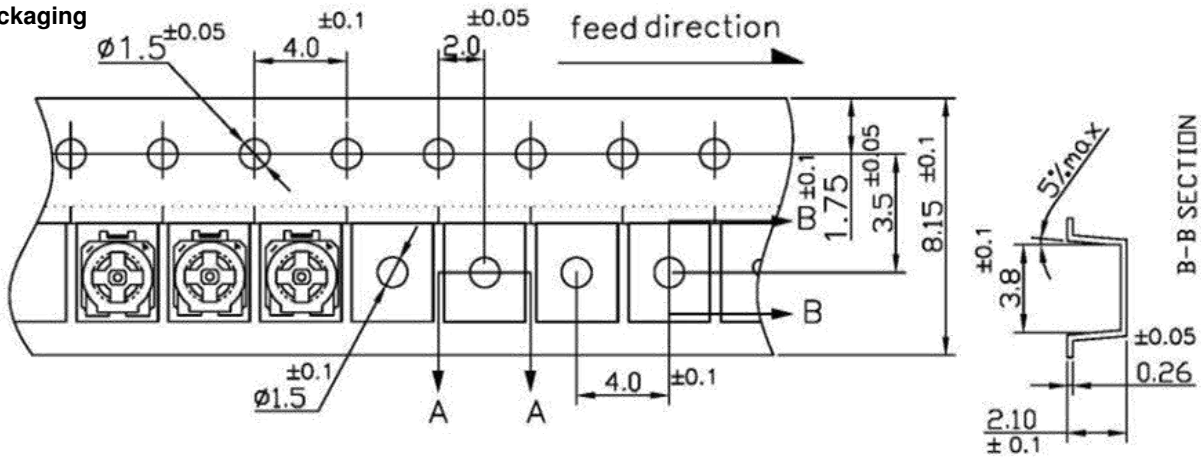
Model Series  
Style W

Packaging Option:  
TR - 7" Tape & Reel, 2000/reel  
RoHS Compliant Product Code  
Resistance Value (see tables below)

**Circuit diagram**



**Packaging**

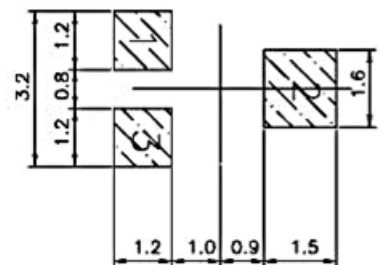
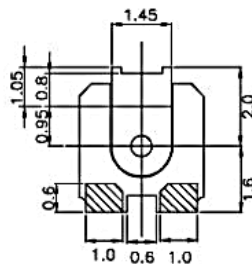
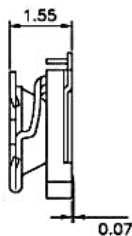
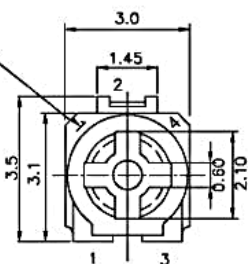


**Standard resistance values and marking**

Resistance (Ohms)	100	200	500	1 K	2 K	5 K	10 K	20 K	50 K	100 K	200 K	500 K	1 MEG
Part marking	12	22	52	12	23	53	14	24	54	15	25	55	16

**Outline Drawing**

**Resistance marking**



**Recommended land pattern**

This catalogue gives no information on product availability. The information is only for product description and is not legally binding. Any technical item is subject to change.