

Data sheet

Carbon composition film preset potentiometers

Ordering code no.: 01 216

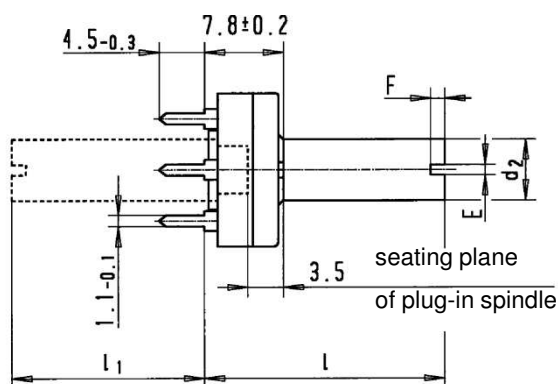
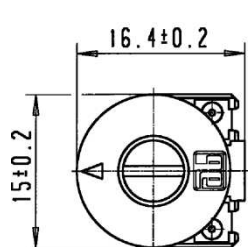


Series 216 Type PCH 216/30

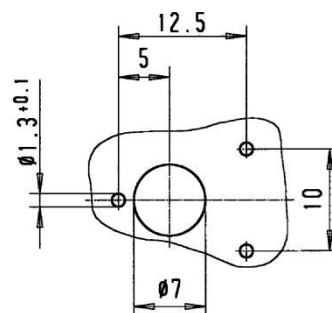
Basic design: plastic moulded housing,
double metal wiper, terminals for printed
circuit board

Special versions:

- Snap-in terminals
- Centre detent



piercing details



Technical data

Rated resistance range	100 Ω – 4.7 M Ω	Temperature coefficient	$\pm 1\,000$ ppm / $^{\circ}\text{C}$ *
Resistance tolerance	$\pm 20\%$ *	Electrical travel	$240 \pm 10^{\circ}$ *
Law (resistance taper)	lin *	Mechanical travel	$270^{\circ} \pm 10^{\circ}$
Independent linearity	$\pm 10\%$ *	Operating torque	0.5 – 2.5 Ncm
Rated dissipation	0.15 W / 40 $^{\circ}\text{C}$	End stop torque	≥ 10 Ncm
Limiting element voltage	250 V	Durability	10 000 cycles
Temperature range	-25 $^{\circ}\text{C}$ to + 70 $^{\circ}\text{C}$		

Spindles

- Plastic moulded, suitable for both sides
- Versions and measurements see table page 12
- Potentiometers also available without spindle

Further adjustment slots for operating spindles on request e. g. square version

* other values and laws on request

Technical details subject to change

This catalogue gives no information on product availability. The information is only for product description and is not legally binding. Any technical item is subject to change.