

#### Frequency Range:

40.00kHz / 48.00kHz / 58.00kHz

#### Features:

- Compact and light weight
- High sensitivity and sound pressure
- High reliability

#### Applications

- Back sonar of automobiles, Parking meters.  
Water level meters



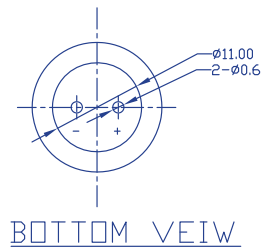
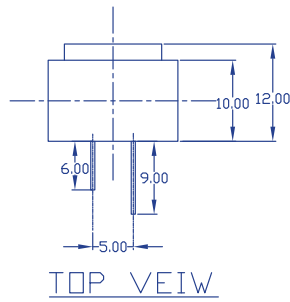
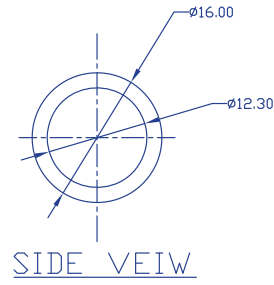
### ■ Standard Specifications

Item	Value		
Frequency Range	40±1.0kHz	48±1.0kHz	58±1.0kHz
Transmitting Sound Pressure Level (0dB=0.02mPa)	103 dB Min	103 dB Min	103 dB Min
Receive Sensitive (0dB=10V/Pa)	-74dB Min	-74dB Min	-85dB Min
Directivity (x-y)	110×50°	110×50°	90×45°
Operating Temperature Range	-40~+80 °C	-40~+80 °C	-40~+80 °C
Operable Temperature Range	-40~+85 °C	-40~+85 °C	-40~+85 °C
Capacitance ( at 25 °C 1kHz)	2000±15% pF	2000±15% pF	2000±15% pF
Ringing	≤1.2 ms	≤1.2 ms	≤1.2 ms
Allowable Input Voltage( at 40kHz / 48Hz)	150 Vp-p	150 Vp-p	150 Vp-p
Using Method(Transmitter / Receive)	Dual Use	Dual Use	Dual Use
Structure	Water Proof	Water Proof	Water Proof

#### Note:

1. Manufacturer reserves the right to change the specification and content of this product for improvement without notification.
2. Custom specification is welcome. Please contact our sales representative for further details.
3. If the crystal is intended for applications which have direct impact on human life and properties, and require a high degree of reliability and safety concerns, customers must provide full information such as but not limit to the application, electrical and reliability specification at the inquiry beginning stage.
4. Customers have to agree to the "Guideline for handling crystal units" and "Standard Terms and Condition of Sales" which is printed this catalog before placing orders to our company or our distributors. There are also unpredictable factors such as applied condition, oscillation margin and etc and customers must check them beforehand. In case of queries, please do not fail to send inquiry to our company before ordering.

■ Dimensions (mm)



■ Directivity

Directivity in Overall Sensitivity

