



Solid State Devices, Inc.

14830 Valley View Blvd * La Mirada, Ca 90638

Phone: (562) 404-7855 * Fax: (562) 404-1773

ssdi@ssdi-power.com * www.ssdi-power.com

DESIGNER'S DATA SHEET

Part Number / Ordering Information ^{1/}

SFT3904A2

\square Screening ^{2/} ___ = Commercial
 TX = TX Level
 TXV = TXV Level
 S = S Level
 Package GW = Gullwing

**SFT3904A2
Series**

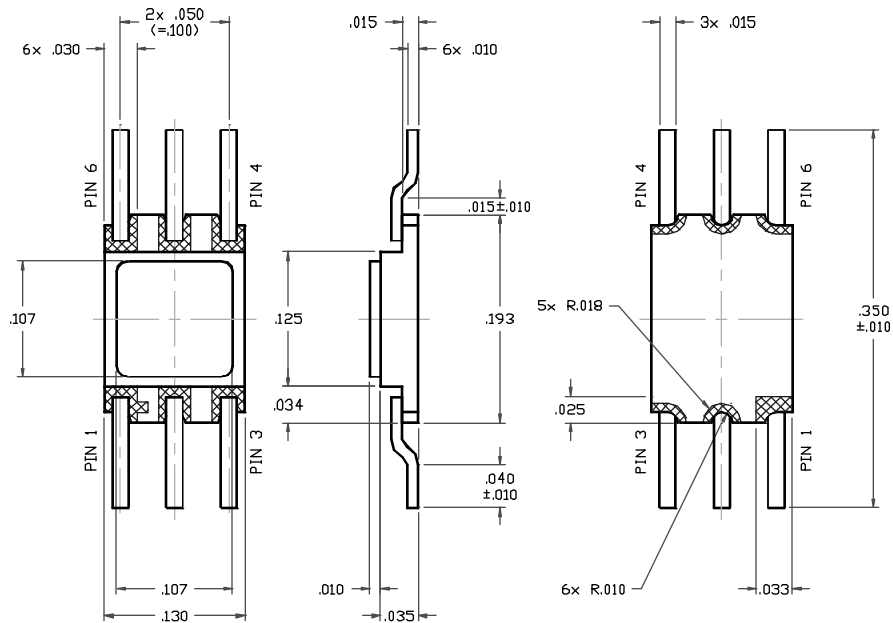
**Dual Microminiature Package
200 mA 40 Volts
Dual NPN Transistor**

Features:

- High Speed Switching Transistor
- Multiple Devices Reduce Board Space
- High Power Dissipation: Up to 600 mW / device
- Replacement for 2N3904AU
- TX, TXV, S-Level screening available
- PNP complimentary parts available (SFT3906A2)

Maximum Ratings	Symbol	Value	Units
Collector – Emitter Voltage	V_{CEO}	40	Volts
Collector – Base Voltage	V_{CBO}	60	Volts
Emitter – Base Voltage	V_{EBO}	6	Volts
Continues Collector Current	I_C	200	mAmps
Power Dissipation @ $T_C = 25^\circ C$	P_D	600	mW
Operating & Storage Temperature	Top & Tstg	-65 to +200	$^\circ C$
Maximum Thermal Resistance (Junction to Case)	$R_{\theta JC}$	0.29	$^\circ C/mW$

Gullwing (GW)



NOTE: All specifications are subject to change without notification. SCD's for these devices should be reviewed by SSDI prior to release.

DATA SHEET #: TR0034 B

Doc

